

AGRICULTURAL HOSE AND COUPLINGS

CROP FARMING
DAIRIES
FISH FARMS
LIVESTOCK FARMS
ORCHARDS
POULTRY FARMS
WINERIES

FEATURING!
AGRICULTURAL HOSE
SELECTION GUIDE!

Page 52



Kuriyama of America, Inc.

plastixs[®]
manufacturing solutions



EDITION 0119

Table of Contents

Agricultural Solution Spraying

Kuri Tec® EVA Yarn Reinforced Spray Hose.....	7
Kuri Tec® PVC Reinforced Spray Hose	7
Redi-GP™ General Purpose Air & Water Hose	7

Agricultural Solution & Tree Spraying

Kuri Tec® A1661	6
Kuri Tec® A1687	6
Kuri Tec® A4083	6
Kuri Tec® A4086	6

Air Tool Hose Assemblies

Kuri Tec® Polyair® Multi-Purpose PVC Air Tool Hose Assemblies	8
Kuri Tec® Tundra-Air® Low Temperature PVC Air Tool Hose Assemblies	8
Kuri Tec® Utility Grade PVC Air Tool Hose Assemblies.....	8

Combination Hose Nipples

Hose Nipple (304 Stainless) NPT Threads	33
Hose Nipple (316 Stainless) NPT Threads.....	33
Hose Nipple (Glass Reinforced Nylon) NPT Threads.....	33
Hose Nipple (Hex Plain Steel) NPT Threads	32
Hose Nipple (Hex Zinc Plated Steel) NPT Threads.....	32
Hose Nipple (Plain Steel) NPT Threads	32
Hose Nipple (Polypropylene) NPT Threads.....	33
Hose Nipple (Zinc Plated Steel) NPT Threads.....	32
Hose Nipple (Zinc Plated Steel) Grooved End.....	32

Couplings

Part A Male Adapter x Female NPT.....	26
Part B Female Coupler x Male NPT	26
Part C Female Coupler x Hose Shank	26
Part D Female Coupler x Female NPT	27
Part E Male Adapter x Hose Shank	27
Part F Male Adapter x Male NPT.....	27

Couplings & Valves

Part DC Dust Cap	28
Part DP Dust Plug.....	28
Polypropylene Ball Valve 4-Bolt Design.....	28
Polypropylene Ball Valve 6-Bolt Design.....	28

EZ-Seal™ Leak Resistant Couplings

Aluminum Part C Female Coupler x Hose Shank.....	29
Aluminum Part E Male Adapter x Hose Shank.....	29
Aluminum Pin Lug Hose Shank Male End (NPSM Threads)	29
Aluminum Pin Lug Hose Shank with Brass Swivel Nut Female End (NPSM Threads).....	29

Ferrules

CRF-SS Series	37
---------------------	----

Food Grade Liquid Transfer Hoses

Alfagomma® Heavy Duty Suction & Discharge Food Grade Oil Resistant Hose.....	22
Kuri Tec® Clear PVC Tubing	21
Kuri Tec® Clearbraid® Food & Beverage Hose.....	20
Tigerflex™ Food Grade Liquid Suction & Discharge Hose ...	22
Tigerflex™ Food Grade Liquid Suction Hose	21-22

Fuel & Oil Hoses

Braid-Lock® 300 PSI Push-On Hose.....	15
Farm Tank Oil Resistant NBR Hose Assemblies	15

Grain and Material Handling

Flexair™ Urevent™ Clear Heavy Duty Food Grade Polyurethane Ducting/Material Handling Hose	23
Hose Tec® Stainless Steel, Unlined Bulk Material Transfer Hose	23
Tigerflex™ Tiger-TR1™ Heavy Duty SBR Wet or Dry Material Handling Hose.....	23

Heavy Duty Water Discharge

150 PSI EPDM Water Discharge Hose.....	17
Ironsides™ Heavy Duty PVC Water Discharge Hose	17
Tuffsides™ Heavy Duty PVC Water Discharge Hose	17

Hose Clamps

CPCS Series.....	36
CPSS Series	36
DCLPL Series	34
DCLPR Series.....	34
SDBC Series.....	34
SDBC-SS Series.....	34
WGC-CS Series	35
WGC-MCS Series	35
WGC-MSS Series	35

Note: Hose working pressures are application and temperature dependant

**For additional information on these or other hose and couplings contact us at
sales@plastixs.com or visit us at: www.plastixs.com**

The trademarks contained in this publication are trademarks of Kuriyama of America, Inc.
The "Alfagomma" trademark contained in this publication is a registered trademark of Alfagomma S.p.A.

Because we continually examine ways to improve our products, we reserve the right to alter specifications without notice. KAHCCA0119

Table of Contents

WGC-SS Series	35	Strainers	
Hydraulic Hoses and Accessories		Bottom Hole Zinc Plated Steel Strainer (NPSM Threads)....	31
ABT4K Series - Alfabiotech	38	Long Round Hole Zinc Plated Steel Strainer	
JIC Solid Male 37° Seat	45	(NPSM Threads)	31
JIC Female 37° Seat	46	Polypropylene Strainer (NPSM Threads).....	31
JIC Female 37° Seat - Double Hex	46	Round Hole Zinc Plated Steel Strainer (NPSM Threads)....	31
NPTF Solid Male 60° Seat.....	43	Square Hole Zinc Plated Steel Strainer (NPSM Threads)....	31
NPTF Male Swivel 60° Seat	44	Top Hole Zinc Plated Steel Strainer (NPSM Threads)	31
NPTF Solid Female Rigid	44	Technical Information	52-55
NPSM Female Swivel 60° Seat.....	44	Tigerflex™ Solarguard™	4
TR1MT Series - MINETUFF.....	39	Traveling Irrigator Supply Line & Manure Drag Hose	
TR2MT Series - MINETUFF	40	Oroflex® Bandama PVC/Nitrile Rubber Irrigation Hose	19
SAE Solid Male O-Ring Boss	45	Oroflex® Drag PVC/Nitrile Rubber Irrigation Hose	19
SAE Female 45° Deat - Doubel Hex.....	47	Water & Agricultural Solution Assemblies	
Kuri Tec® Truespray™	5	Tigerflex™ Green PVC Suction Hose Assemblies	9
Pin Lug Hose Shank Couplings		Standard Duty PVC Water Layflat Discharge Hose Assemblies	
Aluminum Shank Male (NPSM Threads)	30	9	
Aluminum Shank Male End (NST Threads)	30	Water & Concentrated Agricultural Solution	
Aluminum Shank with Brass Swivel Nut Complete Set		Alfagomma® 240 PSI Acid & Chemical Suction &	
(NPSM Threads)	30	Discharge Hose.....	14
Aluminum Shank with Brass Swivel Nut Complete Set		Alfagomma® Heavy Duty Suction & Discharge Hose.....	14
(NST Threads)	30	Water & Liquid Manure Supply Lines	
Aluminum Shank with Brass Swivel Nut Female		Oroflex® 10 PVC/Nitrile Rubber Discharge Hose	18
(NPSM Threads)	30	Oroflex® 20 Black PVC/Nitrile Rubber Air & Discharge Hose	18
Aluminum Shank with Brass Swivel Nut Female		Oroflex® 20 Yellow PVC/Nitrile Rubber Air &	
(NST Threads)	30	Discharge Hose.....	18
Brass Shank with Brass Swivel Nut Complete Set		Water Discharge & Drip Irrigation	
(NPSM Threads)	30	Vinylgreen™ PVC Drip Irrigation & Water Discharge Hose ...	16
Quick Release Couplings		Vinylflow® PVC Irrigation & Water Discharge Hose.....	16
QF - Flat Face Standard ISO 16028.....	50-51	Water Suction and Discharge Hose	
QP - AG Poppet Standard	47-48	Tigerflex™ Solarguard™ WST-SLR Series.....	13
QT - AG Ball Industry Standard.....	49	Tigerflex™ Suction & Discharge Hose	13
Sanitary Fittings		Water Transfer & Agricultural Solution/Liquid Manure Spraying	
Sanitary Clamps.....	24	Tigerflex™ Tiger™ Green EPDM Suction Hose.....	12
Sanitary Hex Nut (for FBS-SS Series).....	24	Tigerflex™ Tiger™ - SD EPDM Suction and Discharge	
Sanitary SS316 Bevel Seat x Hose Shank.....	24	Hose	12
Sanitary SS316 Tri-Clamp x Hose Shanks	24	Tigerflex™ Tiger™ Yellow EPDM Suction Hose	12
Sanitary Gaskets		Water Transfer & Agricultural Solution Spraying	
Sanitary Buna-N Tri-Clamp Gasket Black	25	Tigerflex™ Clear & Green PVC Suction Hose	10
Sanitary Buna-N Tri-Clamp Gasket White	25	Tigerflex™ Clear & White PVC Suction Hose	10
Sanitary EPDM Tri-Clamp Gasket Black.....	25	Tigerflex™ Green PVC Suction Hose.....	10
Sanitary EPDM Tri-Clamp Gasket White	25	Tigerflex™ Low Temperature PVC Suction Hose	11
		Tigerflex™ Solarguard™ SG Series.....	11
		Tigerflex™ Solarguard™ SLR Series.....	11



SOLARGUARD™ Prevent UV Hose Damage!

Hoses used outdoors for prolonged periods of time are subject to damage resulting from exposure to UV light. Tigerflex™ Solarguard™ water and agricultural chemical transfer hoses are specially formulated with a unique blend of UV stabilizers, resulting in hoses that maintain their strength and flexibility up to twice as long as standard PVC hoses, resulting in lower overall service costs.



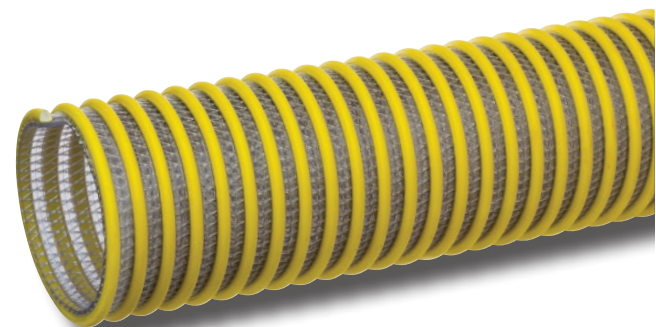
PVC Hose cracking due to UV exposure



SLR™ Series

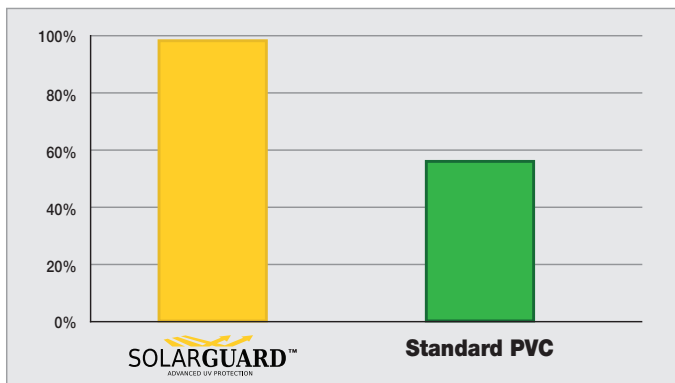


SG™ Series



WST-SLR™ Series

Tensile Strength Retention



Percentage of tensile strength remaining after 720 hours of accelerated UV light exposure per ASTM G154

INNOVATIONS!

AGRICULTURAL HOSE AND COUPLINGS



TRUESPRAY™

Prevent Unwanted Herbicide Carryover Damage!

Kuri Tec® Truespray™ hoses have been shown to reduce unwanted herbicide carryover crop damage from PGR (plant growth-regulating) herbicides such as Dicamba. PGR herbicides, although water soluble, act as weak acids, and their removal requires more time, care and effort (Steckel et al. 2005). In conjunction with proper hose and sprayer cleaning techniques, the Truespray™ hose's permeation resistant liner greatly reduces the amount of PGR herbicide residue buildup compared to other hoses.

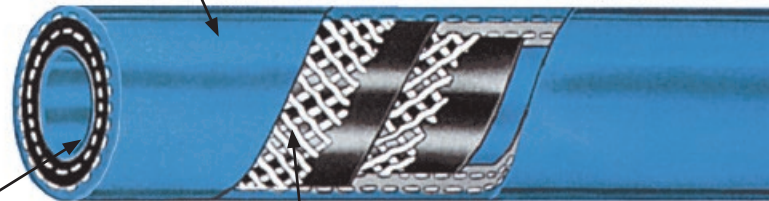
Even after repeated flushing other spray hoses can retain significant amounts of herbicide residue buildup long after use. During re-use this buildup can unexpectedly leach out, causing costly crop damage and subsequent yield loss – even years later! However, Kuri Tec® Truespray™ hoses feature permeation resistant inner liners with superior cleanout characteristics, helping ensure your herbicides and pesticides wind up where you want them, on the field.

Scientific studies have shown over a 50% reduction in yield loss associated with herbicide carryover damage compared to other hoses that were studied (Cundiff et al. 2017)*.



Discoloration and cupping of leaves are signs of herbicide damage.

Pin-pricked cover vents trapped gasses to help prevent ballooning



Highly flushable, permeation resistant inner liner reduces residue buildup

Dual yarn reinforcement for strength & durability

*All performance data was gathered in a controlled environment. Results will vary and may not be representative of the experience of others. Use of the Truespray™ hose is not a replacement for proper cleaning procedures. Please refer to your sprayer manual for proper cleaning procedures.

Steckel L, Chism C, Thompson A (2005) Cleaning Plant Growth Regulator (PGR) Herbicides Out of Field Sprayers. University of Tennessee Agricultural Extension Service W071. 3 p
Cundiff, G., Reynolds, D., & Mueller, T. (2017). Evaluation of Dicamba Persistence among Various Agricultural Hose Types and Cleanout Procedures Using Soybean (Glycine max) as a Bio-Indicator. Weed Science, 65(2), 305-316. doi:10.1017/wsc.2016.29

Because we continually examine ways to improve our products, we reserve the right to alter specifications without notice.

KAHCCA0119

Agricultural Solution & Tree Spraying

Kuri Tec® Polyethylene/Rubber Blend High Pressure Reinforced Spray Hose

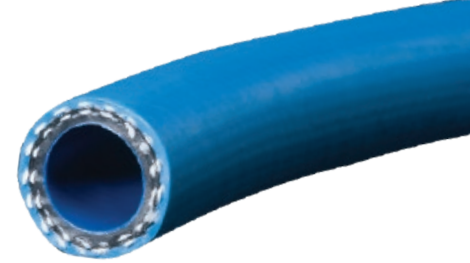
Construction: LLDPE/rubber blend tube, two-pass high tensile strength yarn and rubber blend cover.

Temperature Range: -40°F (-40°C) to +130°F (+54°C)

Typical Application: Transfer of water based/PGR agricultural chemicals

Part Number	Hose Inner Diameter (in)	Length (ft)	Working Pressure (psi) at 68°F	Weight (lbs/ft)
A4086-06X300/100	3/8	300/100	800	0.11
A4086-08X300/100	1/2	300/100	800	0.15
A4086-12X300/100	3/4	300/100	800	0.24
A4086-16X200/100	1	200/100	400	0.33

TRUESPRAY™



Kuri Tec® Polyethylene/Rubber Blend High Pressure Reinforced Spray Hose

Construction: LLDPE/rubber blend tube, two-pass high tensile strength yarn and rubber blend cover.

Temperature Range: -40°F (-40°C) to +130°F (+54°C)

Typical Application: Transfer of water based/PGR agricultural chemicals

Part Number	Hose Inner Diameter (in)	Length (ft)	Working Pressure (psi) at 68°F	Weight (lbs/ft)
A4083-06X300/100	3/8	300/100	800	0.11
A4083-08X300/100	1/2	300/100	800	0.15
A4083-12X300/100	3/4	300/100	800	0.24
A4083-16X200/100	1	200/100	400	0.33

TRUESPRAY™



Kuri Tec® PVC/Polyurethane Blend High Pressure Reinforced Spray Hose

Construction: PVC/polyurethane blend tube, two-pass high tensile strength yarn and PVC cover.

Temperature Range: +15°F (-10°C) to +160°F (+70°C)

Typical Application: Transfer of dilute oil based agricultural chemicals

Part Number	Hose Inner Diameter (in)	Length (ft)	Working Pressure (psi) at 68°F	Weight (lbs/ft)
A1687-06X300	3/8	300	800	0.14
A1687-08X300	1/2	300	800	0.23
A1687X10X300	5/8	300	800	0.32
A1687X12X300	3/4	300	800	0.42



Kuri Tec® PVC/Polyurethane Blend Reinforced Spray Hose

Construction: PVC/polyurethane blend tube, two-pass high tensile strength yarn and PVC cover.

Temperature Range: +15°F (-10°C) to +160°F (+70°C)

Typical Application: Transfer of dilute oil based agricultural chemicals

Part Number	Hose Inner Diameter (in)	Length (ft)	Working Pressure (psi) at 68°F	Weight (lbs/ft)
A1661-06X300	3/8	300	600	0.14
A1661-08X300	1/2	300	600	0.19
A1661-10X300	5/8	300	600	0.32
A1661-12X300	3/4	300	600	0.42



Agricultural Solution Spraying

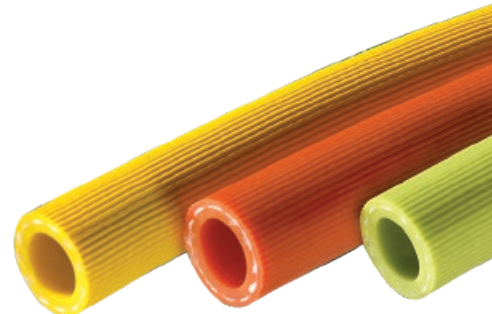
Kuri Tec® PVC Reinforced Spray Hose

Construction: PVC tube and cover with high tensile strength yarn.

Temperature Range: +25°F (-5°C) to +150°F (+65°C)

Typical Application: Agricultural spray applications, vineyard spraying

Standard Series Stock Colors			Size Code	Hose Inner Diameter (in)	Length (ft)	Working Pressure (psi) at 68°F	Weight (lbs/ft)
K4131 Yellow	K4132 Orange	K4137 Mint Green					
✓	✓	✓	06	3/8	300	600	0.12
✓	✓	✓	08	1/2	300	600	0.18



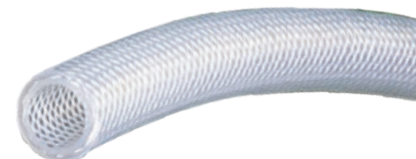
Kuri Tec® EVA Yarn Reinforced Spray Hose

Construction: EVA tube and cover with high tensile strength yarn.

Temperature Range: -30°F (-35°C) to +150°F (+65°C)

Typical Application: Agricultural spray applications, including anhydrous ammonia fertilizer (low pressure only)

Part Number	Hose Inner Diameter (in)	Length (ft)	Working Pressure (psi) at 68°F	Weight (lbs/ft)
K4350-06X300	3/8	300	300	0.07
K4350-08X300	1/2	300	250	0.09
K4350-12X300	3/4	300	150	0.12
K4350-16X200	1	200	150	0.24



Redi-GP™ General Purpose Air & Water Hose

Construction: EPDM tube and cover with high tensile strength yarn

Temperature Range: -40°F (-40°C) to +200°F (+93°C)

Typical Application: Agricultural spray applications

Part Number	Color	Hose Inner Diameter (in)	Length (ft)	Working Pressure (psi) at 68°F	Weight (lbs/ft)
BEGP-025X700	Black	1/4	700	250	0.12
REGP-025X700	Red	1/4	700	250	0.12
BEGP-031X700	Black	5/16	700	200	0.11
REGP-031X700	Red	5/16	700	200	0.12
BEGP-038X700	Black	3/8	700	250	0.16
REGP-038X700	Red	3/8	700	250	0.17
BEGP-050X700	Black	1/2	700	250	0.24
REGP-050X700	Red	1/2	700	250	0.25
BEGP-062X700	Black	5/8	700	200	0.29
REGP-062X700	Red	5/8	700	200	0.30
BEGP-075X700	Black	3/4	700	250	0.36
REGP-075X700	Red	3/4	700	250	0.38
BEGP-100X700	Black	1	700	200	0.49
REGP-100X700	Red	1	700	200	0.51
BEGP-125X300	Black	1-1/4	300	200	0.79
REGP-125X300	Red	1-1/4	300	200	0.81
BEGP-150X300	Black	1-1/2	300	200	0.90
REGP-150X300	Red	1-1/2	300	200	0.95
REGP-200X300	Red	2	300	200	1.13



Air Tool Hose Assemblies

Kuri Tec® Polyair® Multi-Purpose PVC Air Tool Hose Assemblies

Construction: PVC tube and cover with high tensile strength yarn.

Temperature Range: -40°F (-40°C) to +150°F (+65°C)

Hose Ends:

1/4" ID: 1/4" X 1/4" M. NPT, **5/16" ID:** 5/16" X 1/4" M. NPT, **3/8" ID:** 3/8" X 1/4" M. NPT, **1/2" ID:** 1/2" X 1/2" M. NPT, **3/4" ID:** 3/4" X 3/4" M. NPT, **1" ID:** 1" X 1" M. NPT

Typical Application: Pneumatic air tools



Standard Series Stock Colors				Size Code	Hose Inner Diameter (in)	Working Pressure (psi) at 70°F	Assembled Lengths (ft)
HS1131 Yellow	HS1134 Red	HS1136 Blue	HS1138 Grey				
√	√	√	√	04	1/4	300	25/50/100
√	√	√	√	06	3/8	300	25/50/100
√	√	√	√	08	1/2	300	25/50/100
√	√	√	√	12	3/4	250	25/50/100
√	√	√	√	16	1	250	25/50/100

Kuri Tec® Tundra-Air® Low Temperature PVC Air Tool Hose Assemblies

Construction: PVC tube and cover with high tensile strength yarn.

Temperature Range: -65°F (-54°C) to +150°F (+65°C)

Hose Ends:

1/4" ID: 1/4" X 1/4" Male NPT, **3/8" ID:** 3/8" X 1/4" Male NPT, **1/2" ID:** 1/2" X 3/8" Male NPT

Typical Application: Pneumatic air tools

TUNDRA AIR™

Flexible to
-65°F!



Standard Series Stock Colors			Size Code	Hose Inner Diameter (in)	Working Pressure (psi) at 70°F	Assembled Lengths (ft)
HS1231 Yellow	HS1234 Red	HS1236 Blue				
√	√	√	04	1/4	300	25/50/100
√	√	√	06	3/8	300	25/50/100
√	√	√	08	1/2	300	25/50/100

Kuri Tec® Utility Grade PVC Air Tool Hose Assemblies

Construction: PVC tube and cover with high tensile strength yarn.

Temperature Range: +14°F (-10°C) to +150°F (+65°C)

Hose Ends:

1/4" ID: 1/4" X 1/4" Male NPT, **3/8" ID:** 3/8" X 1/4" Male NPT

Typical Application: Pneumatic air tools



Standard Series Stock Colors			Size Code	Hose Inner Diameter (in)	Working Pressure (psi) at 70°F	Assembled Lengths (ft)
HS1181 Yellow	HS1184 Red	HS1186 Blue				
√	√	√	04	1/4	300	25/50/100
√	√	√	06	3/8	300	25/50/100

Water & Agricultural Solution Assemblies

Tigerflex™ Green PVC Suction Hose Assemblies

Construction: PVC tube with rigid PVC helix

Temperature Range: -4°F (-20°C) to +150°F (+65°C)

Typical Application: Transfer of water and mild agricultural chemicals

Part Number	Hose Inner Diameter (in)	Length (ft)	Working Pressure (psi) at 68°F	Weight (ea/lbs)	Pallet Quantity
Hose Ends: Aluminum pin lug couplings male x female					
EG200APLX20-PQ	2	20	65	12.18	20
EG300APLX20-PQ	3	20	60	22.60	15
Hose Ends: Aluminum quick couplings male x female					
EG200ACEX20-PQ	2	20	65	12.88	20
EG300ACEX20-PQ	3	20	60	23.42	15
Hose Ends: Aluminum female couplings x steel NPT threads					
EG200ACNX20-PQ	2	20	65	13.10	20
EG300ACNX20-PQ	3	20	65	24.56	15

KOA Distributor note: Must be purchased in pallet quantities.



Standard Duty PVC Water Layflat Discharge Hose Assemblies

Construction: Spiral homogenous PVC construction with spiral reinforcement is ideal for agriculture and construction applications, and provides for minimal elongation.

Temperature Range: -4°F (-20°C) to +150°F (+65°C)

Typical Application: Water transfer

Part Number	Hose Inner Diameter (in)	Length (ft)	Working Pressure (psi)	Weight (ea/lbs)
Hose Ends: Aluminum pin lug couplings male x female				
LF150APLX50	1-1/2	50	70	9.00
LF200APLX50	2	50	65	13.50
LF300APLX50	3	50	60	21.50
LF400APLX50	4	50	50	30.00
Hose Ends: Aluminum quick couplings male x female				
LF150ACEX50	1-1/2	50	70	9.50
LF200ACEX50	2	50	65	13.60
LF300ACEX50	3	50	60	22.00
LF400ACEX50	4	50	50	31.50



Water Transfer & Agricultural Solution Spraying

Tigerflex™ Green PVC Suction Hose

Construction: PVC tube with rigid PVC helix.

Temperature Range: -4°F (-20°C) to +150°F (+65°C)

Typical Application: Agriculture, construction, contractors, irrigation and rental industries

Part Number	Hose Inner Diameter (in)	Length (ft)	Working Pressure (psi) at 68°F	Weight (lbs/ft)
J075X100	3/4	100	110	0.19
J100X100	1	100	85	0.26
J125X100	1-1/4	100	85	0.35
J150X100	1-1/2	100	70	0.48
J200X100	2	100	65	0.66
J250X100	2-1/2	100	65	0.87
J300X100	3	100	60	1.24
J400X100	4	100	50	1.85
J600X100/20	6	100/20	40	3.39
J800X20	8	20	30	5.63



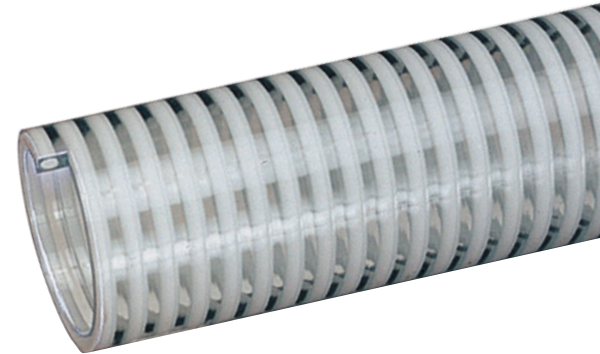
Tigerflex™ Clear and White PVC Suction Hose

Construction: PVC tube with rigid PVC helix.

Temperature Range: -4°F (-20°C) to +150°F (+65°C)

Typical Application: Irrigation, liquid fertilizers and air seeder/planter seed lines

Part Number	Hose Inner Diameter (in)	Length (ft)	Working Pressure (psi) at 68°F	Weight (lbs/ft)
H075X100	3/4	100	110	0.19
H100X100	1	100	85	0.26
H125X100	1-1/4	100	85	0.35
H150X100	1-1/2	100	70	0.48
H200X100	2	100	65	0.66
H250X100	2-1/2	100	65	0.87
H300X100	3	100	60	1.24
H400X100	4	100	50	1.85
H500X100/20	5	100/20	45	2.42
H600X100/20	6	100/20	40	3.39



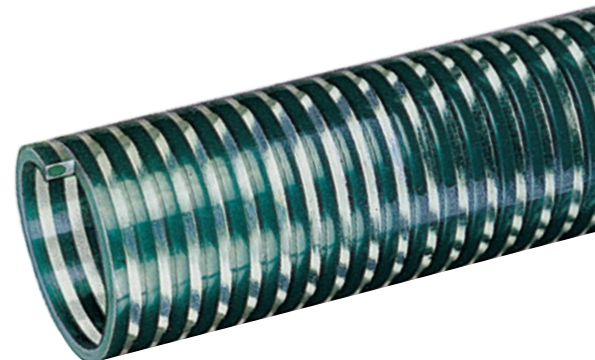
Tigerflex™ Clear and Green PVC Suction Hose

Construction: PVC tube with rigid PVC helix.

Temperature Range: -4°F (-20°C) to +150°F (+65°C)

Typical Application: Irrigation, liquid fertilizers and air seeder/planter seed lines

Part Number	Hose Inner Diameter (in)	Length (ft)	Working Pressure (psi) at 68°F	Weight (lbs/ft)
K075X100	3/4	100	110	0.19
K100X100	1	100	85	0.26
K125X100	1-1/4	100	85	0.35
K150X100	1-1/2	100	70	0.48
K200X100	2	100	65	0.66
K250X100	2-1/2	100	65	0.87
K300X100	3	100	60	1.24
K400X100	4	100	50	1.85



Because we continually examine ways to improve our products, we reserve the right to alter specifications without notice.

KAHCCA0119

Water Transfer & Agricultural Solution Spraying

Tigerflex™ Low Temperature PVC Suction Hose

Construction: PVC tube with rigid PVC helix.

Temperature Range: -40°F (-40°C) to +150°F (+65°C)

Typical Application: Irrigation and liquid fertilizers

Part Number	Hose Inner Diameter (in)	Length (ft)	Working Pressure (psi) at 68°F	Weight (lbs/ft)
BW075X100	3/4	100	115	0.19
BW100X100	1	100	90	0.22
BW125X100	1-1/4	100	90	0.36
BW150X100	1-1/2	100	90	0.48
BW200X100	2	100	90	0.62
BW250X100	2-1/2	100	70	0.87
BW300X100	3	100	65	1.23
BW400X100	4	100	55	1.83
BW500X100/20	5	100/20	45	2.42
BW600X100/20	6	100/20	40	3.36



Tigerflex™ Solarguard™ High UV Resistance PVC Suction Hose

Construction: PVC tube with rigid PVC helix.

Temperature Range: -4°F (-20°C) to +150°F (+65°C)

Typical Application: Irrigation and liquid fertilizers

Part Number	Hose Inner Diameter (in)	Length (ft)	Working Pressure (psi) at 68°F	Weight (lbs/ft)
SG150X100	1-1/2	100	65	0.38
SG200X100	2	100	60	0.56
SG300X100	3	100	55	1.00
SG400X100	4	100	50	1.70
SG600X100/20	6	100/20	40	3.36



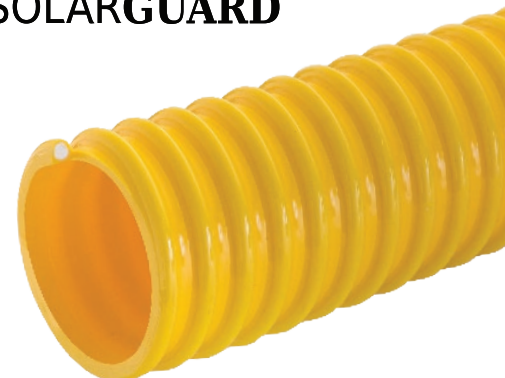

Tigerflex™ Solarguard™ High UV Resistance PVC Suction Hose

Construction: PVC tube with rigid PVC helix.

Temperature Range: -4°F (-20°C) to +150°F (+65°C)

Typical Application: Irrigation and liquid fertilizers

Part Number	Hose Inner Diameter (in)	Length (ft)	Working Pressure (psi) at 68°F	Weight (lbs/ft)
SLR150X100	1-1/2	100	50	0.34
SLR200X100	2	100	50	0.52
SLR250X100	2-1/2	100	45	0.77
SLR300X100	3	100	45	1.18
SLR400X100	4	100	35	1.92
SLR600X100/20	6	100/20	30	3.76
SLR800X40/20	8	40/20	30	5.99

Water Transfer & Agricultural Solution/Liquid Manure Spraying

Tigerflex™ Tiger™ Green EPDM Suction Hose

Construction: EPDM tube with rigid polyethylene helix

Temperature Range: -4°F (-20°C) to +150°F (+65°C)

Typical Application: Irrigation, wastewater and liquid fertilizers

Part Number	Hose Inner Diameter (in)	Length (ft)	Working Pressure (psi) at 68°F	Weight (lbs/ft)
TG100X100	1	100	65	0.28
TG125X100	1-1/4	100	60	0.33
TG150X100	1-1/2	100	50	0.44
TG200X100	2	100	50	0.67
TG250X100	2-1/2	100	45	0.95
TG300X100	3	100	45	1.14
TG400X100	4	100	40	1.84
TG600X100/20	6	100/20	30	3.07



Tigerflex™ AG™ Series Liquid Fertilizer Spray Hose

Construction: EPDM tube with rigid polyethylene helix

Temperature Range: -40°F (-40°C) to +160°F (+71°C)

Typical Application: Irrigation, wastewater and liquid fertilizers

Part Number	Hose Inner Diameter (in)	Length (ft)	Working Pressure (psi) at 68°F	Weight (lbs/ft)
AG150X100	1-1/2	100	45	0.39
AG200X100	2	100	45	0.57
AG300X100	3	100	40	1.02



Tigerflex™ Tiger™ - SD EPDM Suction and Discharge Hose

Construction: EPDM tube and cover, polyester fabric reinforcement and rigid polyethylene helix

Temperature Range: -40°F (-40°C) to +160°F (+71°C)

Typical Application: Irrigation, wastewater and liquid fertilizers

Part Number	Hose Inner Diameter (in)	Length (ft)	Working Pressure (psi) at 68°F	Weight (lbs/ft)
TSD125X100	1-1/4	100	100	0.41
TSD150X100	1-1/2	100	100	0.51
TSD200X100	2	100	100	0.73
TSD300X100	3	100	90	1.18



Water Suction and Discharge Hose

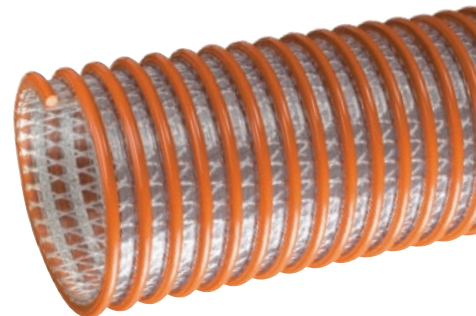
Tigerflex™ Suction & Discharge Hose

Construction: PVC tube, polyester fabric reinforcement and rigid PVC helix.

Temperature Range: -4°F (-20°C) to +150°F (+65°C)

Typical Application: Irrigation and liquid fertilizers

Part Number	Hose Inner Diameter (in)	Length (ft)	Working Pressure (psi) at 68°F	Weight (lbs/ft)
WST150X100	1-1/2	100	110	0.42
WST200X100	2	100	100	0.74
WST300X100	3	100	100	1.13
WST400X100	4	100	75	1.74
WST500X100	5	100	70	2.95
WST600X100/20	6	100/20	70	3.88
WST800X20	8	20	60	5.57



Tigerflex™ Solarguard™ High UV Resistance Suction and Discharge Hose

Construction: PVC tube and cover, polyester fabric reinforcement and rigid PVC helix.

Temperature Range: -4°F (-20°C) to +150°F (+65°C)

Typical Application: Irrigation and liquid fertilizers

Part Number	Hose Inner Diameter (in)	Length (ft)	Working Pressure (psi) at 68°F	Weight (lbs/ft)
WST-SLR150X100	1-1/2	100	110	0.42
WST-SLR200X100	2	100	100	0.74
WST-SLR300X100	3	100	100	1.13
WST-SLR400X100	4	100	75	1.74
WST-SLR600X100/20	6	100/20	70	3.88
WST-SLR800X20	8	20	60	5.57

SOLARGUARD™



Water & Concentrated Agricultural Solution Hoses

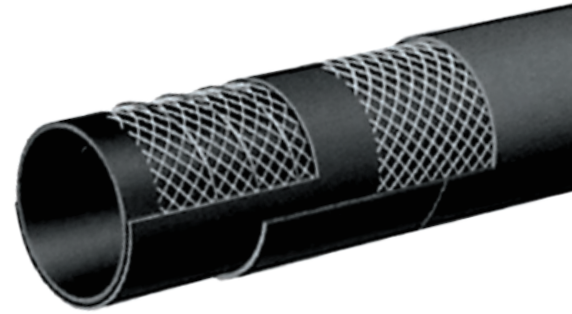
Alfagomma® Heavy Duty Suction & Discharge Hose

Construction: EPDM tube with high tensile strength textile cords and steel helix wires.

Temperature Range: -40°F (-40°C) to +212°F (+100°C)

Typical Application: Agriculture, construction, contractors, irrigation and rental industries

Part Number	Hose Inner Diameter (in)	Length (ft)	Working Pressure (psi) at 68°F	Weight (lbs/ft)
T202AA150X100	1-1/2	100	150	0.47
T202AA200X100	2	100	150	0.84
T202AA250X100	2-1/2	100	150	1.20
T202AA300X100	3	100	150	1.44
T202AA400X100	4	100	150	2.03
T202AA500X100/50/20	5	100/50/20	150	3.18
T202AA600X100/50/25	6	100/50/25	150	4.01
T202AA600X20	6	20	150	4.01
T202AA800X25/20	8	25/20	150	6.59
T202AA1000X20	10	20	150	9.03
T202AA1200X20	12	20	150	12.54



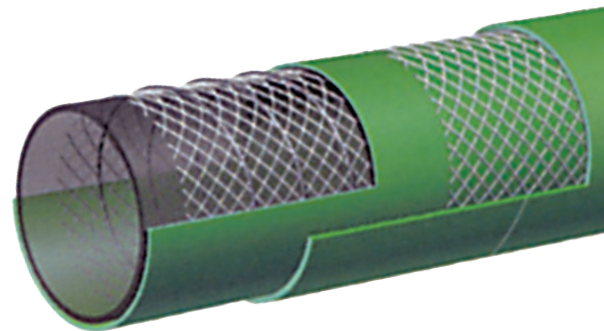
Alfagomma® 240 PSI Acid & Chemical Suction & Discharge Hose

Construction: XLPE (cross-linked polyethylene) tube, high tensile strength cords, steel helix wires and EPDM cover.

Temperature Range: -22°F (-30°C) to +176°F (+80°C)

Typical Application: Designed for the transfer of concentrated (non-dilute) agricultural chemicals. Handles 90% of existing agricultural chemicals and solvents*

Part Number	Hose Inner Diameter (in)	Length (ft)	Working Pressure (psi) at 68°F	Weight (lbs/ft)
T5050G075X100	3/4	100	240	0.46
T5050G100X100	1	100	240	0.56
T5050G150X100	1-1/2	100	240	0.76
T5050G200X100	2	100	240	1.00
T5050G300X100	3	100	240	1.83
T5050G400X100	4	100	240	2.50



* **Warning:** Before using chemical hoses consult chemical resistance chart on page 79 of the Alfagomma Industrial Hose catalog or consult factory.

Fuel & Oil Hoses

Farm Tank Oil Resistant NBR Hose Assemblies

Construction: Class A NBR tube, NBR/PVC cover, high tensile strength yarn and static wire

Temperature Range: 40°F (-40°C) to +180°F (82°C)

Hose Ends:

3/4" ID: 3/4" X 3/4" Brass GHT M X M, **1" ID:** 1" X 1" Brass GHT (Garden Hose) M X M

Typical Application: Fuel filler hose for agricultural, construction and industrial equipment

Part Number	Hose Inner Diameter (in)	Length (ft)	Max. Working Pressure (psi) at 70°F	Weight (lbs/ea)
BLKFT-075X8	3/4	8	60	3.3
BLKFT-075X10	3/4	10	60	3.8
BLKFT-075X12	3/4	12	60	4.0
BLKFT-075X14	3/4	14	60	5.0
BLKFT-075X15	3/4	15	60	5.4
BLKFT-075X20	3/5	20	60	7.0
BLKFT-100X8	1	8	60	4.8
BLKFT-100X10	1	10	60	5.8
BLKFT-100X12	1	12	60	6.7
BLKFT-100X14	1	14	60	7.5
BLKFT-100X15	1	15	60	8.0
BLKFT-100X20	1	20	60	10.5



Braid-Lock® 300 PSI Push-On Hose

Construction: Oil Resistant Nitrile Tube with Braided Textile Reinforcement and Synthetic Rubber Cover

Temperature Range: -30°F (-34°C) to +180°F (+82°C)

Typical Application: Air Tools, Agricultural Equipment Oil Transfer

Part Number	Hose Inner Diameter (in)	Length (ft)	Working Pressure (psi) at 68°F	Weight (lbs/ft)
BL-04BK	1/4	500	300	0.09
BL-06BK	3/8	500	300	0.12
BL-08BK	1/2	500	300	0.17
BL-10BK	5/8	200	300	0.21
BL-12BK	3/4	200	300	0.24



Water Discharge & Drip Irrigation

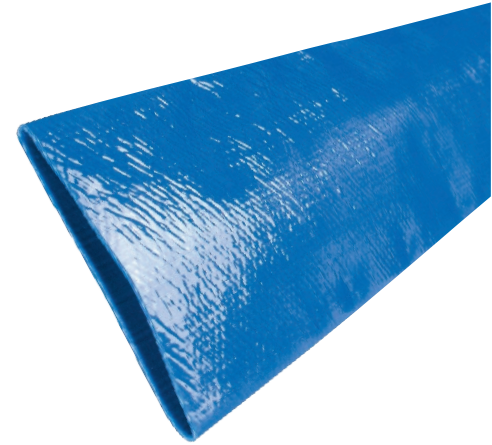
Vinylflow® Premium PVC Irrigation & Water Discharge Hose

Construction: Spiral homogeneous PVC construction is ideal for irrigation and agriculture applications, and provides for minimal elongation.

Temperature Range: -5°F (-20°C) to +170°F (+76°C)

Typical Application: Water transfer and drip irrigation

Part Number	Hose Inner Diameter (in)	Length (ft)	Working Pressure (psi) at 68°F	Weight (lbs/ft)
VF150X300	1-1/2	300	80	0.16
VF200X300	2	300	80	0.23
VF250X300	2-1/2	300	80	0.29
VF300X300	3	300	70	0.39
VF400X300	4	300	70	0.52
VF500X300	5	300	40	0.68
VF600X300	6	300	50	0.86
VF800X300/100	8	300/100	45	1.30
VF1000X100	10	100	35	1.81
VF1200X100	12	100	30	1.95
VF1400X100	14	100	30	2.62
VF1600X100	16	100	30	3.10



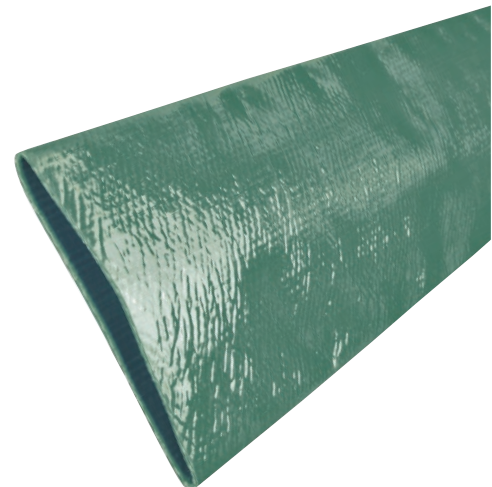
Vinylgreen™ PVC Drip Irrigation & Water Discharge Hose

Construction: Spiral homogeneous PVC construction is ideal for irrigation and agriculture applications, and provides for minimal elongation.

Temperature Range: -5°F (-20°C) to +170°F (+76°C)

Typical Application: Water transfer and drip irrigation

Part Number	Hose Inner Diameter (in)	Length (ft)	Working Pressure (psi) at 68°F	Weight (lbs/ft)
VG150X300	1-1/2	300	80	0.16
VG200X300	2	300	80	0.23
VG300X300	3	300	70	0.39
VG400X300	4	300	70	0.52
VG600X300	6	300	50	0.86
VG800X300	8	300	45	1.30



Heavy Duty Water Discharge

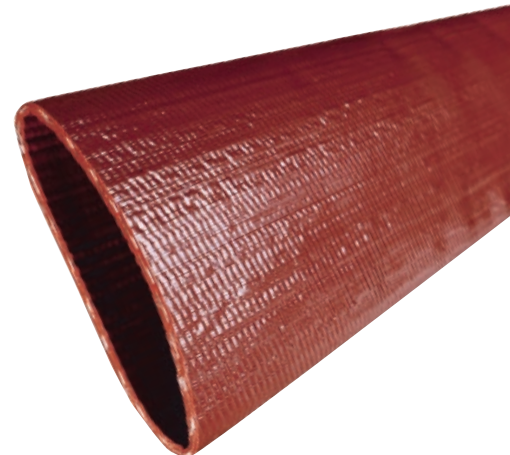
Tuffsides™ Heavy Duty PVC Water Discharge Hose

Construction: Spiral homogeneous PVC construction is ideal for agriculture and construction applications, and provides for minimal elongation.

Temperature Range: -5°F (-20°C) to +170°F (+76°C)

Typical Application: Water transfer

Part Number	Hose Inner Diameter (in)	Length (ft)	Working Pressure (psi) at 68°F	Weight (lbs/ft)
TS150X300	1-1/2	300	145	0.20
TS200X300	2	300	145	0.27
TS300X300	3	300	145	0.50
TS400X300	4	300	120	0.67
TS600X300	6	300	115	1.15
TS800X300	8	300	70	1.55



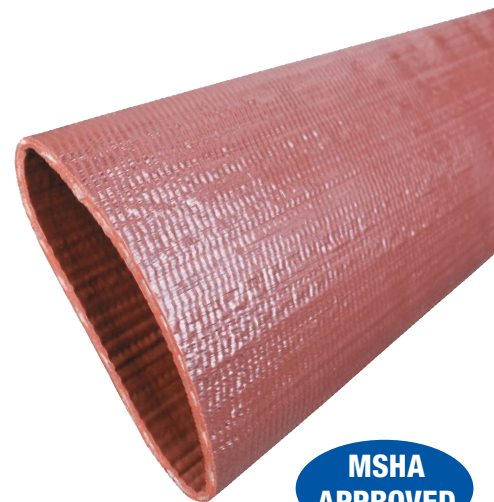
Ironsides™ Premium Duty PVC Water Discharge Hose

Construction: Spiral homogeneous PVC construction is ideal for agriculture and construction applications, and provides for minimal elongation.

Temperature Range: -5°F (-20°C) to +170°F (+76°C)

Typical Application: Water transfer, mining

Part Number	Hose Inner Diameter (in)	Length (ft)	Working Pressure (psi) at 68°F	Weight (lbs/ft)
IS150X300	1-1/2	300	150	0.23
IS200X300	2	300	150	0.32
IS250X300	2-1/2	300	150	0.41
IS300X300	3	300	150	0.52
IS400X300	4	300	125	0.76
IS600X300	6	300	115	1.21
IS800X300/100	8	300/100	70	1.62
IS1000X100	10	100	65	1.95



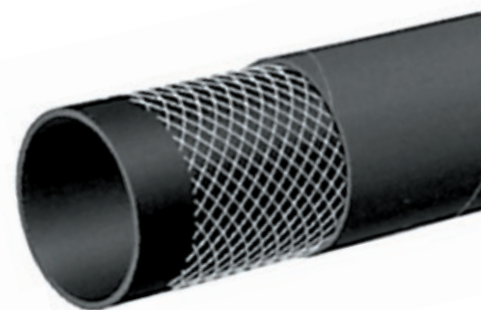
150 PSI EPDM Water Discharge Hose

Construction: EPDM tube and cover with high tensile strength cords.

Temperature Range: -22°F (-30°C) to +176°F (+80°C)

Typical Application: Water discharge

Part Number	Hose Inner Diameter (in)	Length (ft)	Working Pressure (psi) at 68°F	Weight (lbs/ft)
T253AA150X100	1-1/2	100	150	0.37
T253AA200X100	2	100	150	0.50
T253AA250X100	2-1/2	100	150	0.60
T253AA300X100	3	100	150	0.86
T253AA400X100	4	100	150	1.19
T253AA600X100/50	6	100/50	150	2.00
T253AA662X100/50	6-5/8	100/50	150	2.17
T253AA800X100/50	8	100/50	150	2.82
T253AA1000X100/50	10	100/50	150	5.11
T253AA1200X50	12	50	150	5.93



Water & Liquid Manure Supply Lines

OROFLEX® 10 PVC/Nitrile Rubber Discharge Hose

Construction: Black PVC/Nitrile hose using an extruded through-the-weave process with circular woven high tenacity polyester reinforcement.

Temperature Range: -20°F (-29°C) to +176°F (+80°C)

Typical Application: Water transfer

Part Number	Hose Inner Diameter (in)	Length (ft)	Working Pressure	Weight
OF10-150X200	1 1/2	200	203	0.20
OF10-200X200	2	200	203	0.27
OF10-250X200	2 1/2	200	203	0.38
OF10-300X200/100	3	200/100	174	0.48
OF10-400X200/100/50	4	200/100/50	174	0.71
OF10-500X200	5	200	174	0.94
OF10-600X200/100/50	6	200/100/50	174	1.08
OF10-800X100/50	8	100/50	174	1.85
OF10-1000X100/50	10	100/50	174	2.62
OF10-1200X100/50	12	100/50	116	2.86



OROFLEX® 20 YELLOW Heavy Duty PVC/Nitrile Rubber Air & Discharge Hose

Construction: Yellow PVC/Nitrile hose using an extruded through-the-weave process with circular woven high tenacity polyester reinforcement.

Temperature Range: -20°F (-29°C) to +176°F (+80°C)

Typical Application: Agricultural, water transfer, air compressors

Part Number	Hose Inner Diameter (in)	Length (ft)	Working Pressure (psi) at 68°F	Weight (lbs/ft)
OF20Y-75X200/50	3/4	200/50	483	0.13
OF20Y-100X200/50	1	200/50	556	0.17
OF20Y-150X200	1 1/2	200	305	0.30
OF20Y-200X200	2	200	302	0.43
OF20Y-300X200	3	200	261	0.61
OF20Y-400X200	4	200	302	0.84
OF20Y-600X100	6	100	290	1.68



OROFLEX® 20 BLACK Heavy Duty PVC/Nitrile Rubber Discharge Hose

Construction: Black PVC/Nitrile hose using an extruded through-the-weave process with circular woven high tenacity polyester reinforcement.

Temperature Range: -20°F (-29°C) to +176°F (+80°C)

Typical Application: Water & liquid manure transfer

Part Number	Hose Inner Diameter (in)	Length (ft)	Working Pressure (psi) at 68°F	Weight (lbs/ft)
OF20B-600X660	6	660	290	1.68
+OF20B-700x660	7	660	232	1.88
OF20B-800X660	8	660	200	2.22
OF20B-1000X660	10	660	200	2.65
OF20B-1200x660	12	660	150	3.43



+NOTE: This is a non-stock product. Minimum order requirements may apply. Contact us for details.

Because we continually examine ways to improve our products, we reserve the right to alter specifications without notice. KAHCCA0119

Traveling Irrigator Supply Line & Manure Drag Hose



OROFLEX® BANDAMA PVC/Nitrile Rubber Irrigation Hose

Construction: Black PVC/Nitrile hose using an extruded through-the-weave process with circular woven high tenacity polyester reinforcement.

Temperature Range: -20°F (-29°C) to +176°F (+80°C)

Typical Application: Irrigation supply lines, traveling irrigators

Part Number	Hose Inner Diameter (in)	Length (ft)	Working Pressure (psi) at 68°F	Weight (lbs/ft)
BD250X660	2 1/2	660	290	0.57
BD300X660	3	660	261	0.67
BD350X660	3 1/2	660	232	0.77
BD400X660	4	660	202	0.94
BD450X660	4 1/2	660	174	1.08
BD500X660	5	660	174	1.21
BD600X660	6	660	174	1.41



OROFLEX® DRAG Polyurethane Manure Drag Hose

Construction: Green polyurethane (TPU) hose using an extruded through-the-weave process with circular woven high tenacity polyester reinforcement.

Temperature Range: -20°F (-29°C) to +176°F (+80°C)

Typical Application: Liquid manure

Part Number	Hose Inner Diameter (in)	Length (ft)	Working Pressure (psi) at 68°F	Weight (lbs/ft)
+OFDG-400-660	4	660	246	0.87
+OFDG-450-660	4 1/2	660	203	0.94
OFDG-500X660	5	660	203	1.14
OFDG-550X660	5 1/2	660	174	1.28
OFDG-600X660	6	660	174	1.38



+NOTE: This is a non-stock product. Minimum order requirements may apply. Contact us for details.

Food Grade Liquid Transfer Hoses

Kuri Tec® Clearbraid® Food & Beverage Hose

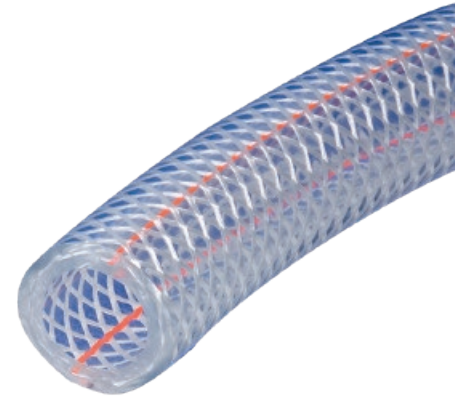
Construction: PVC tube and cover with high tensile strength yarn.

Compliances: 3A, FDA, NSF, RoHS, USDA, USP

Temperature Range: +25°F (-4°C) to +150°F (+65°C)

Typical Application: Liquid transfer

Part Number	Hose Inner Diameter (in)	Length (ft)	Working Pressure (psi) at 70°F	Weight (lbs/ft)
K3150-03X100	3/16	100	250	0.04
K3150-03X300	3/16	300	250	0.04
K3150-04X100	1/4	100	250	0.06
K3150-04X300	1/4	300	250	0.06
K3150-05X100	5/16	100	250	0.08
K3150-05X300	5/16	300	250	0.08
K3150-06X100	3/8	100	225	0.09
K3150-06X300	3/8	300	225	0.09
K3150-08X100	1/2	100	200	0.13
K3150-08X300	1/2	300	200	0.13
K3150-10X100	5/8	100	200	0.18
K3150-10X200	5/8	200	200	0.18
K3150-12X100	3/4	100	150	0.22
K3150-12X200	3/4	200	150	0.22
K3150-16X100	1	100	125	0.30
K3150-16X200	1	200	125	0.30
K3150-20X50	1-1/4	50	100	0.45
K3150-20X100	1-1/4	100	100	0.45
K3150-24X50	1-1/2	50	100	0.64
K3150-24X100	1-1/2	100	100	0.64
K3150-32X50	2	50	75	0.94
K3150X32X100	2	100	75	0.94
K3150-MM04X100	4 mm	100	250	0.04
K3150-MM06X100	6 mm	100	250	0.06
K3150-MM08X100	8 mm	100	250	0.08
K3150-MM10X100	10 mm	100	225	0.10
K3150-MM12X100	12 mm	100	200	0.12
K3150-MM19X100	19 mm	100	150	0.21



Food Grade Liquid Transfer Hoses

Kuri Tec® Clear PVC Tubing

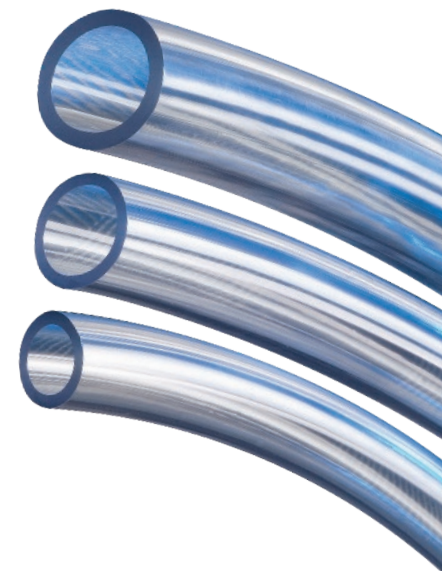
Construction: PVC Tube

Compliances: FDA, RoHS

Temperature Range: +25°F (-4°C) to +150°F (+65°C)

Typical Application: Liquid transfer and seed delivery

Part Number	Tubing Inner Diameter (in)	Hose Inner Diameter (in)	Length (ft)	Working Pressure (psi) at 70°F	Weight (lbs/ft)
K050-0204X100	1/8	1/4	100	65	0.02
K050-0305X100	3/16	5/16	100	55	0.03
K050-0406X100	1/4	3/8	100	55	0.03
K050-0408X100	1/4	1/2	100	60	0.08
K050-0507X100	5/16	7/16	100	50	0.04
K050-0608X100	3/8	1/2	100	45	0.05
K050-0609X100	3/8	9/16	100	50	0.08
K050-0610X100	3/8	5/8	100	55	0.11
K050-0810X100	1/2	5/8	100	30	0.06
K050-0812X100	1/2	3/4	100	45	0.13
K050-1013X100	5/8	13/16	100	35	0.12
K050-1014X100	5/8	7/8	100	40	0.16
K050-1216X100	3/4	1	100	35	0.19
K050-1418X100	7/8	1-1/8	100	30	0.21
K050-1620X100	1	1-1/4	100	25	0.24
K050-2024X50	1-1/4	1-1/2	50	20	0.30
K050-2430X50	1-1/2	1-7/8	50	30	0.54
K050-2432X50	1-1/2	2	50	35	0.75
K050-3240X50	2	2-1/2	50	35	0.96



Tigerflex™ Food Grade Liquid Suction Hose

Construction: PVC tube with rigid PVC helix

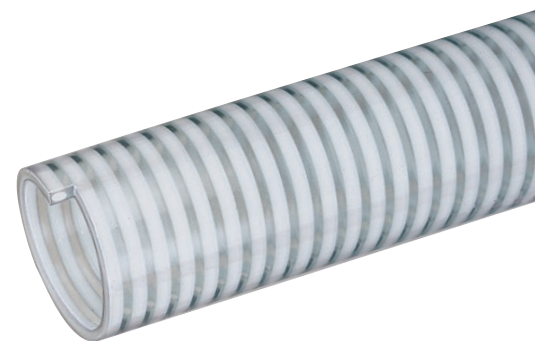
Compliances: 3A, FDA, RoHS, USDA

Temperature Range (MILK Series): -4°F (-20°C) to +150°F (+65°C)

Temperature Range (MILK-LT Series): -40°F (-40°C) to +150°F (+65°C)

Typical Application: Milk and dairy product transfer

Part Number	Hose Inner Diameter (in)	Length (ft)	Working Pressure (psi) at 68°F	Weight (lbs/ft)
MILK150X100	1-1/2	100	75	0.45
MILK200X100	2	100	75	0.63
MILK250X100	2-1/2	100	55	0.81
MILK300X100	3	100	55	1.18
MILK-LT150X100	1-1/2	100	75	0.45
MILK-LT200X100	2	100	75	0.65
MILK-LT250X100	2-1/2	100	55	0.84
MILK-LT300X100	3	100	55	1.20



Food Grade Liquid Transfer Hoses

Tigerflex™ Food Grade Liquid Suction Hose

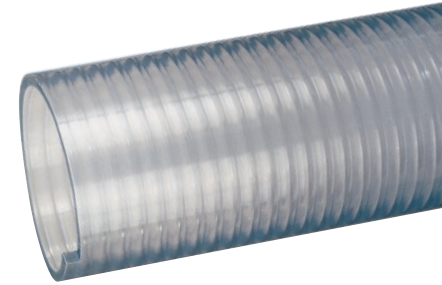
Construction: PVC tube with rigid PVC helix.

Compliances: 3A, FDA, RoHS, USDA

Temperature Range: -4°F (-20°C) to +150°F (+65°C)

Typical Application: Food grade liquids such as potable water, wine & juice

Part Number	Hose Inner Diameter (in)	Length (ft)	Working Pressure (psi) at 68°F	Weight (lbs/ft)
FT075X100	3/4	100	115	0.17
FT100X100	1	100	100	0.24
FT125X100	1-1/4	100	90	0.44
FT150X100	1-1/2	100	85	0.50
FT200X100	2	100	85	0.71
FT250X100	2-1/2	100	65	0.94
FT300X100	3	100	55	1.14
FT400X100/60	4	100/60	50	1.91
FT500X50/20	5	50/20	40	2.41
FT600X20	6	20	30	3.28
FT800X20	8	20	25	5.67



Tigerflex™ Food Grade Liquid Suction & Discharge Hose

Construction: PVC tube with rigid PVC helix and fabric reinforcement.

Compliances: 3A, FDA, RoHS, USDA

Temperature Range: -4°F (-20°C) to +150°F (+65°C)

Typical Application: Food grade liquids such as potable water, wine & juice

Part Number	Hose Inner Diameter (in)	Length (ft)	Working Pressure (psi) at 68°F	Weight (lbs/ft)
WSTF150X100	1-1/2	100	110	0.42
WSTF200X100	2	100	100	0.74
WSTF300X100/20	3	100/20	100	1.13
WSTF400X100/20	4	100/20	75	1.74
WSTF600X100/20	6	100/20	70	3.88



Alfagomma® Heavy Duty Suction & Discharge Food Grade Oil Resistant Hose

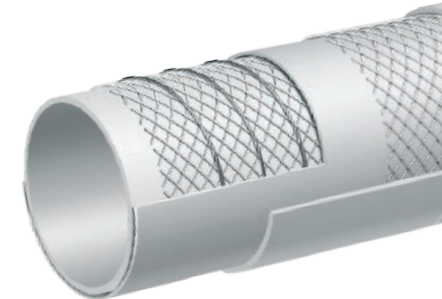
Construction: NBR/PVC cover, NBR tube, high tensile braid and steel helix wires.

Compliances: 3A, FDA

Temperature Range: -22°F (-30° C) to +176°F (+80° C)

Typical Application: Transfer of fatty, oily and alcoholic liquids*

Part Number	Hose Inner Diameter (in)	Length (ft)	Working Pressure (psi) at 68°F	Weight (lbs/ft)
T405LL100x100	1	100	150	0.51
T405LL150x100	1-1/2	100	150	0.84
T405LL200x100	2	100	150	1.08
T405LL300x100	3	100	150	1.71
T405LL400x100	4	100	150	2.36



*Up to 75 proof

Note: This hose also comes with a grey cover, T405LB Series.

Grain and Material Handling

Hose Tec® Stainless Steel, Unlined Bulk Material Transfer Hose Assemblies

Construction: Stainless steel tube with stainless steel ends.

Maximum Service Temperature: +1500°F (+815°C)

Hose Ends: Male NPT

Typical Application: Bulk truck and railcar unloading, heavy duty material handling

Part Number	Hose Inner Diameter (in)	Length (ft)	Weight (lbs/ea)
HTS4200-300X10TOE	3	10	22
HTS4200-400X10TOE	4	10	28
HTS4200-500X10TOE	5	10	34
HTS4200-600X10TOE	6	10	42



Flexair™ Urevent™ Clear Heavy Duty Food Grade Polyurethane Ducting/ Material Handling Hose

Construction: Ether polyurethane tube with steel wire helix.

Compliances: FDA, ROHS

Temperature Range: -65°F (-54°C) to +225°F (+107°C)

Typical Application: In plant transfer of dry materials and powders

Part Number	Hose Inner Diameter (in)	Length (ft)	Working Pressure (psi) at 68°F	Weight (lbs/ft)
UREH-CL400X25	4	25	26	0.73
UREH-CL500X25	5	25	22	0.84
UREH-CL600X25	6	25	20	1.20
UREH-CL800X25	8	25	14	1.67
UREH-CL1000X25	10	25	11	2.03
UREH-CL1200X25	12	25	10	2.47



Tigerflex™ Tiger-TR1™ Heavy Duty SBR Wet or Dry Material Handling Hose

Construction: SBR tube with PVC helix.

Temperature Range: -40°F (-40°C) to +150°F (+65°C)

Typical Application: Wet or dry abrasive material handling, plant vac systems

Part Number	Hose Inner Diameter (in)	Length (ft)	Working Pressure (psi) at 68°F	Weight (lbs/ft)
TR1-150X100	1-1/2	100	35	0.47
TR1-200X100	2	100	32	0.65
TR1-250X100	2-1/2	100	30	0.84
TR1-300X100	3	100	28	0.90
TR1-400X100	4	100	26	1.73
TR1-500X20/100	5	100/20	21	3.00
TR1-600X20/100	6	100/20	19	4.00
TR1-800X20	8	20	19	7.40



Sanitary Fittings



Sanitary SS316 Tri-Clamp x Hose Shank

Size (in)	Crimp Fitting Part Number	Clamp Fitting Long Shank Part Number	Clamp Fitting Short Shank Part Number
1	TCS-SS100	BHAS-SS100	RHAS-SS100
1-1/2	TCS-SS150	BHAS-SS150	RHAS-SS150
2	TCS-SS200	BHAS-SS200	RHAS-SS200
2-1/2	TCS-SS250	—	RHAS-SS250
3	TCS-SS300	BHAS-SS300	RHAS-SS300
4	TCS-SS400	BHAS-SS400	RHAS-SS400



Sanitary Clamps

Size (in)	Single Pin Part Number	Double Pin Part Number	Bolted Part Number
1 & 1-1/2	SPHDS150	DPHDS150	DBS150
2	SPHDS200	DPHDS200	DBS200
2-1/2	SPHDS250	DPHDS250	—
3	SPHDS300	DPHDS300	DBS300
4	SPHDS400	DPHDS400	DBS400



Sanitary SS316 Bevel Seat x Hose Shank

Size (in)	Part Number
1	FBS-SS100
1-1/2	FBS-SS150
2	FBS-SS200
2-1/2	FBS-SS250
3	FBS-SS300
4	FBS-SS400



Sanitary Hex Nut (for FBS-SS Series)

Size (in)	Part Number
1	HNS100
1-1/2	HNS150
2	HNS200
2-1/2	HNS250
3	HNS300
4	HNS400

Because we continually examine ways to improve our products, we reserve the right to alter specifications without notice.

KAHCCA0119

Sanitary Gaskets

Sanitary Buna-N Tri-Clamp Gasket Black

Color Code: ● (1 Red Dot)

Certification: 3A 18-03 sanitary standard

Temperature Range: -65°F (-54°C) to +210°F (+99°C)

Part Number	Size (in)	Weight Each (lbs)	Standard Carton
BUNA-40MPU100	1	0.012	25
BUNA-40MPU150	1-1/2	0.013	25
BUNA-40MPU200	2	0.014	25
BUNA-40MPU250	2-1/2	0.018	25
BUNA-40MPU300	3	0.020	25
BUNA-40MPU400	4	0.030	25



Sanitary Buna-N Tri-Clamp Gasket White

Color Code: ● (1 Red Dot)

Certification: 3A 18-03 sanitary standard

Temperature Range: -65°F (-54°C) to +210°F (+99°C)

Part Number	Size (in)	Weight Each (lbs)	Standard Carton
BUNA-40MPUW100	1	0.012	25
BUNA-40MPUW150	1-1/2	0.013	25
BUNA-40MPUW200	2	0.014	25
BUNA-40MPUW250	2-1/2	0.018	25
BUNA-40MPUW300	3	0.022	25
BUNA-40MPUW400	4	0.034	25



Sanitary EPDM Tri-Clamp Gasket Black

Color Code: ● ● ● (3 Green Dots)

Certification: 3A 18-03 sanitary standard

Temperature Range: -60°F (-51°C) to +300°F (+149°C)

Part Number	Size (in)	Weight Each (lbs)	Standard Carton
EPDM-40MPE100	1	0.012	25
EPDM-40MPE150	1-1/2	0.013	25
EPDM-40MPE200	2	0.014	25
EPDM-40MPE250	2-1/2	0.016	25
EPDM-40MPE300	3	0.020	25
EPDM-40MPE400	4	0.030	25



Sanitary FKM Tri-Clamp Gasket Black

Color Code: ○ ● (1 White/1 Yellow Dot)

Certification: 3A 18-03 sanitary standards

Temperature Range: -20°F (-29°C) to +350°F (+177°C)

Part Number	Size (in)	Weight Each (lbs)	Standard Carton
FKM-40MPSFY100	1	0.013	25
FKM-40MPSFY150	1-1/2	0.014	25
FKM-40MPSFY200	2	0.018	25
FKM-40MPSFY300	3	0.030	25
FKM-40MPSFY400	4	0.046	25



Couplings



Part A Male Adapter x Female NPT

Size (in)	Aluminum Part Number	Polypropylene Part Number	Glass Reinforced Nylon Part Number
1/2	AL-A050	PPA050	-
1	AL-A100	PPA100	GRA100
1-1/2	AL-A150	PPA150	GRA150
2	AL-A200	PPA200	GRA200
3	AL-A300	PPA300	GRA300
4	AL-A400	PPA400	GRA400
6	AL-A600	-	-
8	AL-A800	-	-



Part B Female Coupler x Male NPT

Size (in)	Aluminum (brass handles) Part Number	Aluminum (stainless handles) Part Number	Polypropylene Part Number	Glass Reinforced Nylon Part Number
1/2	AL-B050	-	PPB050	-
1	AL-B100	ALSH-B100	PPB100	GRB100
1-1/2	AL-B150	ALSH-B150	PPB150	GRB150
2	AL-B200	ALSH-B200	PPB200	GRB200
3	AL-B300	ALSH-B300	PPB300	GRB300
4	AL-B400	ALSH-B400	PPB400	GRB400
6	AL-B600	-	-	-
8	AL-B800	-	-	-



Part C Female Coupler x Hose Shank

Size (in)	Aluminum (brass handles) Part Number	Aluminum (stainless handles) Part Number	Polypropylene Part Number	Glass Reinforced Nylon Part Number
1/2	AL-C050	-	PPC050	-
1	AL-C100	ALSH-C100	PPC100	GRC100
1-1/2	AL-C150	ALSH-C150	PPC150	GRC150
2	AL-C200	ALSH-C200	PPC200	GRC200
3	AL-C300	ALSH-C300	PPC300	GRC300
4	AL-C400	ALSH-C400	PPC400	GRC400
6	AL-C600	-	-	-
8	AL-C800	-	-	-

Couplings



Part D Female Coupler x Female NPT

Size (in)	Aluminum (brass handles) Part Number	Aluminum (stainless handles) Part Number	Polypropylene Part Number	Glass Reinforced Nylon Part Number
1/2	AL-D050	-	PPD050	-
1	AL-D100	ALSH-D100	PPD100	GRD100
1-1/2	AL-D150	ALSH-D150	PPD150	GRD150
2	AL-D200	ALSH-D200	PPD200	GRD200
3	AL-D300	ALSH-D300	PPD300	GRD300
4	AL-D400	ALSH-D400	PPD400	GRD400
6	AL-D600	-	-	-
8	AL-D800	-	-	-



Part E Male Adapter x Hose Shank

Size (in)	Aluminum Part Number	Polypropylene Part Number	Glass Reinforced Nylon Part Number
1/2	AL-E050	PPE050	-
1	AL-E100	PPE100	GRE100
1-1/2	AL-E150	PPE150	GRE150
2	AL-E200	PPE200	GRE200
3	AL-E300	PPE300	GRE300
4	AL-E400	PPE400	GRE400
6	AL-E600	-	-
8	AL-E800	-	-



Part F Male Adapter x Male NPT

Size (in)	Aluminum Part Number	Polypropylene Part Number	Glass Reinforced Nylon Part Number
1/2	AL-F050	PPF050	-
1	AL-F100	PPF100	GRF100
1-1/2	AL-F150	PPF150	GRF150
2	AL-F200	PPF200	GRF200
3	AL-F300	PPF300	GRF300
4	AL-F400	PPF400	GRF400
6	AL-F600	-	-
8	AL-F800	-	-

Couplings & Valves



Part DC Duct Cap

Size (in)	Aluminum (brass handles) Part Number	Aluminum (stainless handles) Part Number	Polypropylene Part Number	Glass Reinforced Nylon Part Number
1/2	AL-DC050	-	PPDC050	-
1	AL-DC100	ALSH-DC100	PPDC100	GRDC100
1-1/2	AL-DC150	ALSH-DC150	PPDC150	GRDC150
2	AL-DC200	ALSH-DC200	PPDC200	GRDC200
3	AL-DC300	ALSH-DC300	PPDC300	GRDC300
4	AL-DC400	ALSH-DC400	PPDC400	GRDC400
6	AL-DC600	-	-	-
8	AL-DC800	-	-	-



Part DP Dust Plug

Size (in)	Aluminum Part Number	Polypropylene Part Number	Glass Reinforced Nylon Part Number
1/2	AL-DP050	PPDP050	-
1	AL-DP100	PPDP100	GRDP100
1-1/2	AL-DP150	PPDP150	GRDP150
2	AL-DP200	PPDP200	GRDP200
3	AL-DP300	PPDP300	GRDP300
4	AL-DP400	PPDP400	GRDP400
6	AL-DP600	-	-
8	AL-DP800	-	-



Polypropylene Ball Valve 4-Bolt Design

Part Number	Size (in)	Weight Each (lbs)	Standard Carton
PPBV050	1/2	0.88	24
PPBV075	3/4	0.85	24
PPBV100	1	1.16	24
PPBV125	1 1/4	1.65	24
PPBV150	1 1/2	1.67	24

Polypropylene Ball Valve 6-Bolt Design

Part Number	Size (in)	Weight Each (lbs)	Standard Carton
PPBV200	2	3.71	8
PPBV300	3	6.60	6
PPBV400	4	9.90	2

Because we continually examine ways to improve our products, we reserve the right to alter specifications without notice. KAHCCA0119

EZ-Seal™ Leak Resistant Couplings

Ideally Suited for Layflat Hoses

Applications:

- Agriculture • Chemicals • Petroleum • Construction
- Material handling

Construction:

- Aluminum; ASTM B85 Grade 383

Features & Benefits:

- Rubber seals - Help prevent leakage
- Interchangeability - Part C & E conform to Mil Spec A-A-59326
- Versatile - Suitable for use with other PVC and Rubber Hoses

Note: To insure proper sealing attach band clamps directly over rubber seals.



Aluminum Part C Female Coupler x Hose Shank

Part Number	Size (in)	Weight Each (lbs)	Standard Carton
AL-CLF150	1 1/2	0.77	30
AL-CLF200	2	0.98	40
AL-CLF300	3	1.98	15
AL-CLF400	4	2.87	15
AL-CLF600	6	5.65	6



Aluminum Part E Male Adapter x Hose Shank

Part Number	Size (in)	Weight Each (lbs)	Standard Carton
AL-ELF150	1 1/2	0.44	40
AL-ELF200	2	0.64	50
AL-ELF300	3	1.38	18
AL-ELF400	4	2.51	20
AL-ELF600	6	4.83	6



Aluminum Pin Lug Hose Shank with Brass Swivel Nut Female End (NPSM Threads)

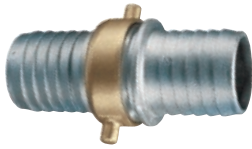
Part Number	Size (in)	Weight Each (lbs)	Standard Carton
ABF-LF150	1 1/2	0.37	150
ABF-LF200	2	0.58	80
ABF-LF300	3	1.16	24
ABF-LF400	4	2.01	20



Aluminum Pin Lug Hose Shank Male End (NPSM Threads)

Part Number	Size (in)	Weight Each (lbs)	Standard Carton
ABM-LF150	1 1/2	0.22	150
ABM-LF200	2	0.40	80
ABM-LF300	3	1.04	24
ABM-LF400	4	1.48	20

Pin Lug Hose Shank Couplings



Aluminum Shank with Brass Swivel Nut Complete Set (NPSM Threads)

Part Number	Size (in)	Weight Each (lbs)	Standard Carton
AB150	1 1/2	0.56	75
AB200	2	0.88	40
AB250	2 1/2	1.34	18
AB300	3	2.70	12
AB400	4	4.42	10
AB600	6	8.30	4



Brass Shank with Brass Swivel Nut Complete Set (NPSM Threads)

Part Number	Size (in)	Weight Each (lbs)	Standard Carton
BB150	1 1/2	1.17	35
BB200	2	1.98	30
BB300	3	5.00	12
BB400	4	9.38	6



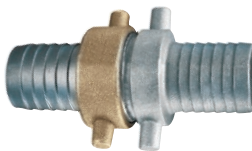
Aluminum Shank Male (NPSM Threads)

Part Number	Size (in)	Weight Each (lbs)	Standard Carton
ABM150	1 1/2	0.18	150
ABM200	2	0.25	80
ABM250	2 1/2	0.40	36
ABM300	3	1.04	24
ABM400	4	1.70	20
ABM600	6	3.04	8



Aluminum Shank with Brass Swivel Nut Female (NPSM Threads)

Part Number	Size (in)	Weight Each (lbs)	Standard Carton
ABF150	1 1/2	0.38	150
ABF200	2	0.62	80
ABF250	2 1/2	0.94	36
ABF300	3	1.66	24
ABF400	4	2.72	20
ABF600	6	5.26	8



Aluminum Shank with Brass Swivel Nut Complete Set (NST Threads)

Part Number	Size (in)	Weight Each (lbs)	Standard Carton
FHNST150	1 1/2	0.43	40
FHNST250	2 1/2	1.04	12



Aluminum Shank with Brass Swivel Nut Female (NST Threads)

Part Number	Size (in)	Weight Each (lbs)	Standard Carton
FHNST-F150	1 1/2	0.29	150
FHNST-F250	2 1/2	0.70	36

PSI Rating @ 70°F (+21°C)

1/2" – 2"	75 PSI
2 1/2" – 4"	50 PSI
6"	25 PSI



Aluminum Shank Male End (NST Threads)

Part Number	Size (in)	Weight Each (lbs)	Standard Carton
FHNST-M150	1 1/2	0.14	150
FHNST-M250	2 1/2	0.34	36

Strainers



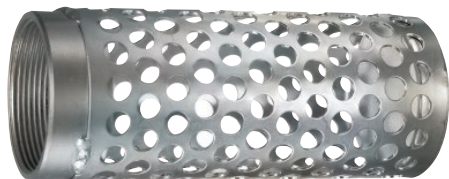
**Round Hole Zinc Plated Steel Strainer
(NPSM Threads)**

Part Number	Size (in)	Weight Each (lbs)	Standard Carton
RHS150	1 1/2	1.36	32
RHS200	2	1.78	18
RHS250	2 1/2	2.02	18
RHS300	3	3.08	18
RHS400	4	2.90	18
RHS600	6	6.04	6
RHS800	8	7.34	4
RHS1000	10	26.50	1



**Square Hole Zinc Plated Steel Strainer
(NPSM Threads)**

Part Number	Size (in)	Weight Each (lbs)	Standard Carton
SHS150	1 1/2	1.12	32
SHS200	2	1.74	18
SHS300	3	2.50	18
SHS400	4	2.52	18
SHS600	6	6.32	6
SHS800	8	7.34	4
SHS1000	10	26.50	1



**Long Round Hole Zinc Plated Steel Strainer
(NPSM Threads)**

Part Number	Size (in)	Weight Each (lbs)	Standard Carton
LHS150	1 1/2	0.75	30
LHS200	2	0.94	25
LHS300	3	2.00	16



**Polypropylene Strainer
(NPSM Threads)**

Part Number	Size (in)	Weight Each (lbs)	Standard Carton
PPS150	1 1/2	0.25	18
PPS200	2	0.30	18
PPS300	3	0.65	12



**Top Hole Zinc Plated Steel Strainer
(NPSM Threads)**

Part Number	Size (in)	Weight Each (lbs)	Standard Carton
THS150	1 1/2	1.64	25
THS200	2	2.00	20
THS300	3	2.68	15



**Bottom Hole Zinc Plated Steel Strainer
(NPSM Threads)**

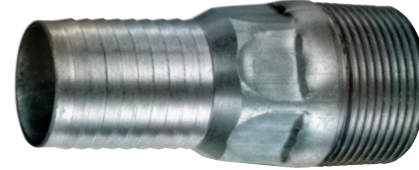
Part Number	Size (in)	Weight Each (lbs)	Standard Carton
BHS150	1 1/2	1.64	20
BHS200	2	2.00	20
BHS300	3	2.68	15

Combination Hose Nipples



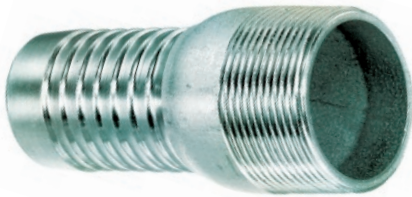
Hose Nipple (Plain Steel) NPT Threads

Part Number	Size (in)	Weight Each (lbs)	Standard Carton
STN050	1/2	0.14	25
STN075	3/4	0.22	25
STN100	1	0.32	50
STN125	1 1/4	0.56	20
STN150	1 1/2	0.72	10
STN200	2	1.10	40
STN250	2 1/2	1.74	20
STN300	3	2.18	12
STN400	4	3.22	8
STN500	5	4.12	4
STN600	6	12.24	4



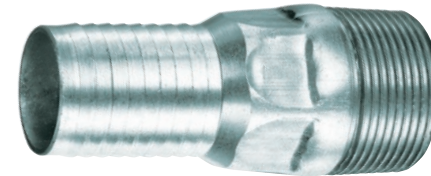
Hose Nipple (Hex Plain Steel) NPT Threads

Part Number	Size (in)	Weight Each (lbs)	Standard Carton
HEX-STN050	1/2	0.14	25
HEX-STN075	3/4	0.22	25
HEX-STN100	1	0.32	50
HEX-STN125	1 1/4	0.56	20



Hose Nipple (Zinc Plated Steel) NPT Threads

Part Number	Size (in)	Weight Each (lbs)	Standard Carton
SPN050	1/2	0.14	25
SPN075	3/4	0.22	25
SPN100	1	0.32	50
SPN125	1 1/4	0.56	20
SPN150	1 1/2	0.72	10
SPN200	2	1.10	40
SPN250	2 1/2	1.74	20
SPN300	3	2.18	12
SPN400	4	3.22	8
SPN600	6	12.24	4
SPN800	8	16.44	2
SPN1000	10	21.78	1
SPN1200	12	33.18	1



Hose Nipple (Hex Zinc Plated Steel) NPT Threads

Part Number	Size (in)	Weight Each (lbs)	Standard Carton
HEX-SPN050	1/2	0.14	25
HEX-SPN075	3/4	0.22	25
HEX-SPN100	1	0.32	50
HEX-SPN125	1 1/4	0.56	20



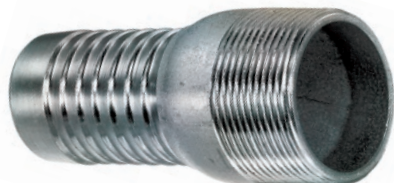
Hose Nipple (Zinc Plated Steel) Grooved End

Part Number	Size (in)	Weight Each (lbs)	Standard Carton
GEN100	1	0.58	100
GEN125	1 1/4	0.62	80
GEN150	1 1/2	0.86	60
GEN200	2	1.28	50
GEN250	2 1/2	2.03	20
GEN300	3	3.17	20
GEN400	4	3.88	12
GEN600	6	14.60	4
GEN800	8	19.73	2
GEN1000	10	26.14	1
GEN1200	12	39.82	1

Because we continually examine ways to improve our products, we reserve the right to alter specifications without notice.

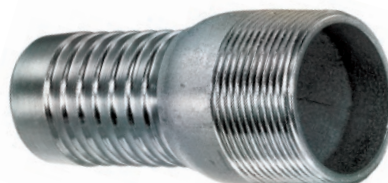
KAHCCA0119

Combination Hose Nipples



Hose Nipple (304 Stainless) NPT Threads

Part Number	Size (in)	Weight Each (lbs)	Standard Carton
SSN304-050	1/2	0.18	25
SSN304-075	3/4	0.26	25
SSN304-100	1	0.35	50
SSN304-125	1 1/4	0.55	20
SSN304-150	1 1/2	0.66	10
SSN304-200	2	1.16	40
SSN304-250	2 1/2	1.31	20
SSN304-300	3	2.20	12
SSN304-400	4	3.31	8
SSN304-500	5	8.82	4
SSN304-600	6	11.02	4



Hose Nipple (316 Stainless) NPT Threads

Part Number	Size (in)	Weight Each (lbs)	Standard Carton
SSN050	1/2	0.18	25
SSN075	3/4	0.26	25
SSN100	1	0.35	50
SSN125	1 1/4	0.55	20
SSN150	1 1/2	0.66	10
SSN200	2	1.16	40
SSN250	2 1/2	1.31	20
SSN300	3	2.20	12
SSN400	4	3.31	8
SSN500	5	8.82	4
SSN600	6	11.02	4



Hose Nipple (Polypropylene) NPT Threads

Part Number	Size (in)	Weight Each (lbs)	Standard Carton
PPN050	1/2	0.03	400
PPN075	3/4	0.06	200
PPN100	1	0.07	100
PPN125	1 1/4	0.11	80
PPN150	1 1/2	0.13	60
PPN200	2	0.22	40
PPN300	3	0.55	12



Hose Nipple (Glass Reinforced Nylon) NPT Threads

Part Number	Size (in)	Weight Each (lbs)	Standard Carton
GRN050	1/2	0.03	400
GRN075	3/4	0.06	200
GRN100	1	0.07	100
GRN125	1 1/4	0.11	80
GRN150	1 1/2	0.13	60
GRN200	2	0.22	40
GRN300	3	0.55	12
GRN400	4	0.80	12

PSI Rating @ 70°F (+21°C)

**Steel, Plated Steel,
Stainless Steel Polypropylene**
1/2" – 1 1/2" 125 psi
2" – 6" 75 psi
8" – 12" 50 psi

Glass Reinforced Nylon
1/2" – 2" 150 psi
3" 125 psi
4" 75 psi

Hose Clamps



**Zinc Plated Carbon Steel Spiral Double Bolt Clamp
(For Counterclockwise Spiral Hoses) Designed for
Corrugated Tigerflex™ Hoses**

Part Number	Size (in)	Torque (ft lbs)	Weight Each (lbs)	Standard Carton
SDBC-1.5	1 1/2	6	0.18	100
SDBC-2	2	6	0.36	100
SDBC-2.25	2 1/4	6	0.40	100
SDBC-2.5	2 1/2	8	0.48	100
SDBC-3	3	8	0.66	70
SDBC-3.5	3 1/2	8	0.70	70
SDBC-4	4	24	1.02	40
SDBC-5	5	24	1.76	30
SDBC-6	6	30	2.00	20
SDBC-8	8	30	2.76	10
SDBC-10	10	30	3.46	10
SDBC-12	12	30	4.14	10



**Stainless Steel 304 Spiral Double Bolt Clamp
(For Counterclockwise Spiral Hoses)
Designed for Corrugated Tigerflex™ Hoses**

Part Number	Size (in)	Torque (ft lbs)	Weight Each (lbs)	Standard Carton
SDBC-SS-1.5	1 1/2	6	0.20	100
SDBC-SS-2	2	6	0.40	100
SDBC-SS-2.5	2-1/2	6	0.53	70
SDBC-SS-3	3	8	0.73	70
SDBC-SS-3.5	3-1/2	8	0.77	40
SDBC-SS-4	4	24	1.12	40
SDBC-SS-5	5	24	1.94	30
SDBC-SS-6	6	30	2.20	20
SDBC-SS-8	8	30	3.04	10
SDBC-SS-10	10	30	3.81	10
SDBC-SS-12	12	30	4.55	10



**Bridge Clamp for Tigerflex™ Ducting Hoses
300 Stainless Worm Gear Band
(Designed For Counterclockwise Spiral Hoses)**

Part Number	Size (in)	Size Range (in)	Weight Each (lbs)	Standard Carton
DCLPL250	2 1/2	2 3/8 - 2 3/4	0.086	200
DCLPL300	3	2 7/8 - 3 3/8	0.093	200
DCLPL400	4	3 1/2 - 4 1/2	0.130	200
DCLPL500	5	4 3/8 - 5 1/4	0.143	200
DCLPL600	6	5 1/4 - 6 1/4	0.167	200
DCLPL700	7	6 1/4 - 7 1/4	0.175	200
DCLPL800	8	7 3/8 - 8 3/8	0.207	100
DCLPL1000	10	9 1/4 - 10 1/4	0.242	100
DCLPL1200	12	11 1/4 - 12 1/4	0.284	100



**Bridge Clamp for Flexair™ Ducting Hoses
300 Stainless Worm Gear Band
(Designed For Clockwise Spiral Hoses)**

Part Number	Size (in)	Size Range (in)	Weight Each (lbs)	Standard Carton
DCLPR250	2 1/2	2 3/8 - 2 3/4	0.086	200
DCLPR300	3	2 7/8 - 3 3/8	0.093	200
DCLPR400	4	3 1/2 - 4 1/2	0.130	200
DCLPR500	5	3 1/2 - 4 1/2	0.143	200
DCLPR600	6	4 1/4 - 5 1/4	0.167	200
DCLPR700	7	5 1/4 - 6 1/4	0.175	200
DCLPR800	8	7 3/8 - 8 3/8	0.207	100
DCLPR1000	10	9 1/4 - 10 1/4	0.242	100
DCLPR1200	12	11 1/4 - 12 1/4	0.284	100

Because we continually examine ways to improve our products, we reserve the right to alter specifications without notice. KAHCCA0119

Hose Clamps

Kuri-Clamp™ Standard Duty Worm Gear Clamp

Stainless Steel Band & Housing with Carbon Steel Screw



Part Number	Size Range (in)	Pieces Per Box	Band Width (in)	Torque Rating (in/lbs)	Weight Per Box (lbs)
WGC-CS06	7/16 - 25/32	10	1/2	25-37	0.60
WGC-CS08	1/2 - 29/32	10	1/2	25-37	0.60
WGC-CS10	9/16 - 1 1/16	10	1/2	25-37	0.60
WGC-CS12	11/16 - 1 1/4	10	1/2	25-37	0.60
WGC-CS16	13/16 - 1 1/2	10	1/2	25-37	0.70
WGC-CS20	13/16 - 1 3/4	10	1/2	25-37	0.70
WGC-CS24	1 1/16 - 2	10	1/2	25-37	0.80
WGC-CS28	1 5/16 - 2 1/4	10	1/2	25-37	0.80
WGC-CS32	1 9/16 - 2 1/2	10	1/2	25-37	0.80
WGC-CS36	1 13/16 - 2 3/4	10	1/2	25-37	0.90
WGC-CS40	2 1/16 - 3	10	1/2	25-37	0.90
WGC-CS44	2 5/16 - 3 1/4	10	1/2	25-37	0.90
WGC-CS48	2 9/16 - 3 1/2	10	1/2	25-37	1.00
WGC-CS52	2 13/16 - 3 3/4	10	1/2	25-37	1.10
WGC-CS56	3 1/16 - 4	10	1/2	25-37	1.10
WGC-CS60	3 5/16 - 4 1/4	10	1/2	25-37	1.20
WGC-CS64	3 9/16 - 4 1/2	10	1/2	25-37	1.20
WGC-CS72	1 7/8 - 5	10	1/2	25-37	1.30
WGC-CS80	2 1/2 - 5 1/2	10	1/2	25-37	1.40
WGC-CS88	3 1/8 - 6	10	1/2	25-37	1.40
WGC-CS96	3 5/8 - 6 1/2	10	1/2	25-37	1.50
WGC-CS104	4 1/8 - 7	10	1/2	25-37	1.50

* CLAMPS ONLY SOLD IN BOX QUANTITIES

Kuri-Clamp™ Standard Duty Worm Gear Clamp

Stainless Steel Band, Housing, & Screw



Part Number	Size Range (in)	Pieces Per Box	Band Width (in)	Torque Rating (in/lbs)	Weight Per Box (lbs)
WGC-SS06	7/16 - 25/32	10	1/2	30-45	0.60
WGC-SS08	1/2 - 29/32	10	1/2	30-45	0.60
WGC-SS10	9/16 - 1 1/16	10	1/2	30-45	0.60
WGC-SS12	11/16 - 1 1/4	10	1/2	30-45	0.60
WGC-SS16	13/16 - 1 1/2	10	1/2	30-45	0.70
WGC-SS20	13/16 - 1 3/4	10	1/2	30-45	0.70
WGC-SS24	1 1/16 - 2	10	1/2	30-45	0.80
WGC-SS28	1 5/16 - 2 1/4	10	1/2	30-45	0.80
WGC-SS32	1 9/16 - 2 1/2	10	1/2	30-45	0.80
WGC-SS36	1 13/16 - 2 3/4	10	1/2	30-45	0.90
WGC-SS40	2 1/16 - 3	10	1/2	30-45	0.90
WGC-SS44	2 5/16 - 3 1/4	10	1/2	30-45	0.90
WGC-SS48	2 9/16 - 3 1/2	10	1/2	30-45	1.00
WGC-SS52	2 13/16 - 3 3/4	10	1/2	30-45	1.10
WGC-SS56	3 1/16 - 4	10	1/2	30-45	1.10
WGC-SS60	3 5/16 - 4 1/4	10	1/2	30-45	1.20
WGC-SS64	3 9/16 - 4 1/2	10	1/2	30-45	1.20
WGC-SS72	1 7/8 - 5	10	1/2	30-45	1.30
WGC-SS80	2 1/2 - 5 1/2	10	1/2	30-45	1.40
WGC-SS88	3 1/8 - 6	10	1/2	30-45	1.40
WGC-SS96	3 5/8 - 6 1/2	10	1/2	30-45	1.50
WGC-SS104	4 1/8 - 7	10	1/2	30-45	1.50

* CLAMPS ONLY SOLD IN BOX QUANTITIES

Kuri-Clamp™ Mini Worm Gear Clamp

Stainless Steel Band & Housing with Carbon Steel Screw

Part Number	Size Range (in)	Pieces Per Box	Band Width (in)	Torque Rating (in/lbs)	Weight Per Box (lbs)
WGC-MCS04	7/32 - 5/8	10	5/16	10-15	0.20
WGC-MCS06	7/16 - 25/32	10	5/16	10-15	0.20
WGC-MCS08	1/2 - 29/32	10	5/16	10-15	0.20
WGC-MCS10	9/16 - 1 1/16	10	5/16	10-15	0.20
WGC-MCS12	11/16 - 1 1/4	10	5/16	10-15	0.30

* CLAMPS ONLY SOLD IN BOX QUANTITIES

Kuri-Clamp™ Mini Worm Gear Clamp

Stainless Steel Band, Housing, & Screw

Part Number	Size Range (in)	Pieces Per Box	Band Width (in)	Torque Rating (in/lbs)	Weight Per Box (lbs)
WGC-MSS04	7/32 - 5/8	10	5/16	10-15	0.20
WGC-MSS06	7/16 - 25/32	10	5/16	10-15	0.20
WGC-MSS08	1/2 - 29/32	10	5/16	10-15	0.20
WGC-MSS10	9/16 - 1 1/16	10	5/16	10-15	0.20
WGC-MSS12	11/16 - 1 1/4	10	5/16	10-15	0.30

* CLAMPS ONLY SOLD IN BOX QUANTITIES

Hose Clamps



Galvanized Carbon Steel Center Punch Clamp

Part Number	Size (in)	Pieces Per Box	Band Width (in)	Weight Per Box (lbs)	Standard Box
CPCS03	13/16	100	3/8	3.60	1
CPCS31	1 3/8	100	3/8	4.60	1
CPCS04	1	100	5/8	8.30	1
CPCS05	1 1/4	100	5/8	8.70	1
CPCS06	1 1/2	100	5/8	9.70	1
CPCS07	1 3/4	100	5/8	10.60	1
CPCS08	2	100	5/8	11.50	1
CPCS09	2 1/4	100	5/8	12.60	1
CPCS10	2 1/2	50	5/8	6.80	1
CPCS11	2 3/4	50	5/8	7.30	1
CPCS12	3	50	5/8	7.70	1
CPCS14	3 1/2	50	5/8	8.70	1
CPCS16	4	25	5/8	4.90	1
CPCS18	4 1/2	25	5/8	5.50	1
CPCS20	5	25	5/8	5.90	1
CPCS24	6	25	5/8	6.80	1
CPCS26	6 1/2	25	5/8	7.10	1
CPCS28	7	25	5/8	7.40	1
CPCS32	8	25	5/8	8.20	1

*CLAMPS ARE SOLD IN BOX QUANTITIES ONLY.

201 Stainless Steel Center Punch Clamp

Part Number	Size (in)	Pieces Per Box	Band Width (in)	Weight Per Box (lbs)	Standard Box
CPSS03	13/16	100	3/8	3.60	1
CPSS31	1 3/8	100	3/8	4.60	1
CPSS04	1	100	5/8	8.30	1
CPSS05	1 1/4	100	5/8	8.70	1
CPSS06	1 1/2	100	5/8	9.70	1
CPSS07	1 3/4	100	5/8	10.60	1
CPSS08	2	100	5/8	11.50	1
CPSS09	2 1/4	100	5/8	12.60	1
CPSS10	2 1/2	50	5/8	6.80	1
CPSS11	2 3/4	50	5/8	7.30	1
CPSS12	3	50	5/8	7.70	1
CPSS14	3 1/2	50	5/8	8.70	1
CPSS16	4	25	5/8	4.90	1
CPSS18	4 1/2	25	5/8	5.50	1
CPSS20	5	25	5/8	5.90	1
CPSS24	6	25	5/8	6.80	1
CPSS26	6 1/2	25	5/8	7.10	1
CPSS28	7	25	5/8	7.40	1
CPSS32	8	25	5/8	8.20	1

*CLAMPS ARE SOLD IN BOX QUANTITIES ONLY.

Ferrules

CRF-SS Series

Kuri-Crimp™ 304 Stainless Steel Crimp Ferrules

- Designed for use with TCS-SS, FBS-SS, FILS-SS and TES-SS series fittings



Part Number	Hose ID (in)	Ferrule ID (in)	Wall Thickness (in)	Length (in)	Weight Each (lbs)	Standard Carton
CRF-SS10108	1	1.50	0.059	2.29	0.20	200
CRF-SS10109	1	1.56	0.059	2.29	0.21	200
CRF-SS10110	1	1.63	0.059	2.29	0.21	200
CRF-SS10111	1	1.69	0.059	2.29	0.23	200
CRF-SS10112	1	1.75	0.059	2.29	0.23	200
CRF-SS10113	1	1.81	0.059	2.29	0.24	200
CRF-SS15200	1 1/2	2.00	0.059	2.36	0.27	128
CRF-SS15202	1 1/2	2.12	0.059	2.36	0.29	128
CRF-SS15204	1 1/2	2.25	0.059	2.36	0.29	80
CRF-SS15206	1 1/2	2.39	0.059	2.36	0.30	80
CRF-SS15208	1 1/2	2.50	0.059	2.36	0.35	80
CRF-SS20209	2	2.56	0.059	2.79	0.40	80
CRF-SS20210	2	2.62	0.059	2.79	0.43	80
CRF-SS20211	2	2.68	0.059	2.79	0.43	80
CRF-SS20213	2	2.81	0.059	2.79	0.44	80
CRF-SS20215	2	2.94	0.059	2.79	0.46	80
CRF-SS25302	2 1/2	3.12	0.059	3.11	0.56	60
CRF-SS25304	2 1/2	3.25	0.059	3.11	0.58	60
CRF-SS25306	2 1/2	3.39	0.059	3.11	0.60	60
CRF-SS25308	2 1/2	3.50	0.059	3.11	0.62	60
CRF-SS30309	3	3.56	0.098	3.94	1.27	40
CRF-SS30310	3	3.62	0.098	3.94	1.29	40
CRF-SS30312	3	3.75	0.098	3.94	1.31	40
CRF-SS30313	3	3.81	0.098	3.94	1.33	40
CRF-SS30315	3	3.94	0.098	3.94	1.36	40
CRF-SS30400	3	4.00	0.098	3.94	1.40	40
CRF-SS40409	4	4.56	0.098	4.19	1.57	30
CRF-SS40410	4	4.63	0.098	4.19	1.59	30
CRF-SS40411	4	4.68	0.098	4.19	1.74	30
CRF-SS40412	4	4.75	0.098	4.19	1.76	30
CRF-SS40413	4	4.81	0.098	4.19	1.78	30
CRF-SS40414	4	4.88	0.098	4.19	1.82	30
CRF-SS40500	4	5.00	0.098	4.19	1.86	30
CRF-SS40501	4	5.06	0.098	4.19	1.89	30

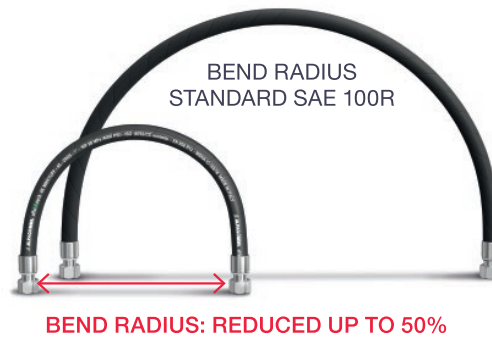
Hydraulic Hoses and Accessories

ALFAGOMMA®

alfabiotech

NEW EXTRA FLEXIBLE BIO OIL RESISTANT HOSE RANGE

- Specially designed for bio oil full compatibility
- Extreme flexibility: up to 50% better bend radius compared to SAE 100R series
- Minetuff cover for top abrasion & ozone resistance
- MSHA-approved fire resistant cover



Alfabiotech 3000 - Minetuff - ABT3K
Alfabiotech 4000 - Minetuff - ABT4K

NEW



ABT3K & ABT4K - 4 wire spiral
 Exceeds SAE 100R12 sizes 3/4" through 2"
 ISO 18752/CC all sizes
 1 million impulse tested
 Meets flame resistance acceptance designation US MSHA IC-152/16

Nominal Specifications											
Series Number	Size Code	Nominal ID		Nominal OD		Max Working [†] Pressure (psi)	Min. Bend. Radius		Weight (lbs/ft)	Coupling Recommendations	
		(in)	(mm)	(in)	(mm)		(in)	(mm)		AlfaCrimp One-Piece	Two-Piece Couplings Ferrule Non-Skive
ABT4K	06	3/8	10	0.79	20.1	4000	3.0	75	0.55	D	AF4
ABT4K	08	1/2	13	0.91	23.0	4000	3.5	90	0.75	D	AF4
ABT4K	10	5/8	16	1.04	26.3	4000	5.5	140	0.58	D	AF4
ABT4K	12	3/4	19.0	1.16	29.5	4000	4.7	120	0.83	D	AF4
ABT4K	16	1	25.4	1.48	37.5	4000	5.9	150	1.10	D	AF4
ABT3K	20	1 1/4	31.8	1.80	45.7	3000	10.0	230	1.51	D	AF4
ABT3K	24	1 1/2	38.1	2.04	51.8	3000	16.5	420	1.86	D	AF4
ABT3K	32	2	50.8	2.63	66.8	3000	20.9	530	2.69	D	AF4

Because we continually examine ways to improve our products, we reserve the right to alter specifications without notice. KAHCCA0119

Hydraulic Hoses and Accessories

Single wire braid hydraulic hose on easy-to-handle reels – TR1MT - MINETUFF

NEW

TR1MT – Single wire braid
 Meets or exceeds
 ISO 1436-1 - SAE 100 R1AT/R1S
 EN 853 1SN
 MSHA IC-152/16 approved



Nominal Specifications

Series Number	Size Code	Nominal ID		Nominal OD		Max Working Pressure (psi)	Min. Bend. Radius		Weight (lbs/ft)	Coupling Recommendations		
		(in)	(mm)	(in)	(mm)		(in)	(mm)		AlfaCrimp One-Piece	Two-Piece Couplings Ferrule Non-Skive	
TR1MT	04	1/4	6	0.51	13.0	3250	4.0	100	0.13	B	AF1	
TR1MT	05	5/16	8	0.57	14.5	3120	4.6	115	0.16	B	AF1	
TR1MT	06	3/8	10	0.68	17.2	2610	5.2	130	0.20	B	AF1	
TR1MT	08	1/2	13	0.79	20.1	2320	7.2	180	0.25	B	AF1	
TR1MT	10	5/8	16	0.91	23.1	1900	8.0	200	0.28	B	AF1	
TR1MT	12	3/4	19	1.07	27.3	1530	9.6	240	0.38	B	AF1	
TR1MT	16	1	25	1.39	35.2	1280	12.0	300	0.58	B	AF1	
TR1MT	20	1 1/4	32	1.67	42.5	920	16.8	420	0.74		D	AF1
TR1MT	24	1 1/2	38	1.96	49.7	730	20.0	500	0.89		D	AF1
TR1MT	32	2	51	2.48	62.9	600	25.2	630	1.23		D	AF1

Hydraulic Hoses and Accessories

Double wire braid hydraulic hose on easy-to-handle reels –TR2MT - MINETUFF

NEW

TR2MT – Double wire braid

Meets or exceeds
SAE 100 R2AT
ISO 1436-1 - SAE 100 R2AT/R2S
EN 853 2SN MSHA IC-152/16 approved



Nominal Specifications

Series Number	Size Code	Nominal ID		Nominal OD		Max Working Pressure (psi)	Min. Bend. Radius		Weight (lbs/ft)	Coupling Recommendations		
		(in)	(mm)	(in)	(mm)		(in)	(mm)		AlfaCrimp One-Piece	Two-Piece Couplings Ferrule Non-Skive	
TR2MT	04	1/4	6	0.57	14.5	5850	4.0	100	0.22	B		AF2
TR2MT	05	5/16	8	0.63	16.1	5000	4.6	115	0.23	B		AF2
TR2MT	06	3/8	10	0.73	18.5	4800	5.0	125	0.31	B		AF2
TR2MT	08	1/2	13	0.84	21.4	4000	7.0	175	0.36	B	D	AF2
TR2MT	10	5/8	16	0.97	24.6	3630	8.0	200	0.45	B	D	AF2
TR2MT	12	3/4	19	1.14	29.0	3120	9.6	240	0.57	B	D	AF2
TR2MT	16	1	25	1.45	36.8	2400	12.0	300	0.84	B	D	AF2
TR2MT	20	1 1/4	32	1.83	46.4	1820	16.8	420	1.03		D	AF2
TR2MT	24	1 1/2	38	2.11	53.7	1310	20.0	500	1.36		D	AF2
TR2MT	32	2	51	2.59	65.9	1200	25.2	630	1.85		D	AF2

Hydraulic Hoses and Accessories

Single wire braid light weight cleaning hose on easy-to-handle reels – TAJ3BK/TAJ3BU



TAJ3BK (Black) –
Single wire braid



TAJ3BU (Blue) –
Single wire braid

Nominal Specifications

Series Number	Size Code	Nominal ID		Nominal OD		Max Working Pressure (psi)	Min. Bend. Radius		Weight (lbs/ft)	Coupling Recommendations		
		(in)	(mm)	(in)	(mm)		(in)	(mm)		AlfaCrimp One-Piece	Two-Piece Couplings	
											Ferrule Non-Skive	
TAJ3BK	04	1/4	6.4	0.48	12.1	3000	2.0	50	0.11	B	AF1	
TAJ3BK	05	5/16	7.9	0.56	14.1	3000	2.4	60	0.13	B	AF1	
TAJ3BK	06	3/8	9.5	0.61	15.6	3000	2.6	65	0.17	B	AF1	
TAJ3BK	08	1/2	12.7	0.77	19.5	3000	3.6	90	0.27	B	AF1	
TAJ3BU	04	1/4	6.4	0.48	12.1	3000	2.0	50	0.11	B	AF1	
TAJ3BU	05	5/16	7.9	0.56	14.1	3000	2.4	60	0.13	B	AF1	
TAJ3BU	06	3/8	9.5	0.61	15.6	3000	2.6	65	0.17	B	AF1	
TAJ3BU	08	1/2	12.7	0.77	19.5	3000	3.6	90	0.27	B	AF1	

Hydraulic Hoses and Accessories

Double wire braid light weight cleaning hose on easy-to-handle reels – TAJ5BK/TAJ5BU

TAJ5BK (Black) –
Double wire braid



TAJ5BU (Blue) –
Double wire braid



Nominal Specifications

Series Number	Size Code	Nominal ID		Nominal OD		Max Working [†] Pressure (psi)	Min. Bend. Radius		Weight (lbs/ft)	Coupling Recommendations	
		(in)	(mm)	(in)	(mm)		(in)	(mm)		AlfaCrimp One-Piece	Two-Piece Couplings
											Ferrule Non-Skive
TAJ5BK	04	1/4	6.4	0.53	13.4	5850	2.8	70	0.18	B	AF1
TAJ5BK	05	5/16	7.9	0.59	15.0	5850	3.0	76	0.21	B	AF1
TAJ5BK	06	3/8	9.5	0.69	17.4	5850	3.6	90	0.27	B	AF1
TAJ5BK	08	1/2	12.7	0.81	20.6	5850	4.6	115	0.36	B	AF1
TAJ5BU	04	1/4	6.4	0.53	13.4	5850	2.8	70	0.18	B	AF1
TAJ5BU	05	5/16	7.9	0.59	15.0	5850	3.0	76	0.21	B	AF1
TAJ5BU	06	3/8	9.5	0.69	17.4	5850	3.6	90	0.27	B	AF1
TAJ5BU	08	1/2	12.7	0.81	20.6	5850	4.6	115	0.36	B	AF1

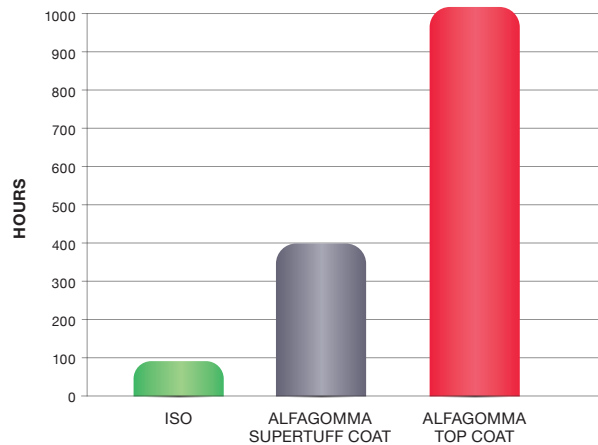
Hydraulic Hoses and Accessories

ALFAGOMMA® TOP COAT

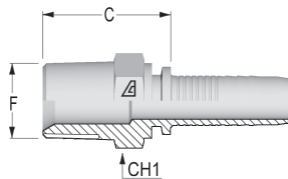
ALFAGOMMA TOP COAT OVER 10 TIMES HIGHER THAN STANDARD

- Tested in accordance with ASTM B117-03 and UNI ISO 9927 standards
- Over 500 hours corrosion prevention in salt spray fog to white rust
- More than 1000 hours corrosion resistance to red rust

Resistance to red rust in salt fog
(test in compliance with ISO 9227)



Inserts for two-piece fittings – US End Configurations



NPTF Solid Male 60° Seat

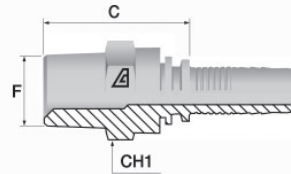
Part Number	Dash Size	Hose ID Size		F Thread		C Cut-Off Factor (mm)	Hex Dia. CH1 (mm)	Weight Each (lbs)
		(in)	(mm)	Dash Size	Size (in TPI)			
A-0302-MNPT	03	3/16	4.8	02	1/8-27	19.8	12	0.03
A-0402-MNPT	04	1/4	6.4	02	1/8-27	21.3	14	0.04
A-0404-MNPT	04	1/4	6.4	04	1/4-18	26.8	17	0.06
A-0406-MNPT	04	1/4	6.4	06	3/8-18	27.8	19	0.08
A-0504-MNPT	05	5/16	7.9	04	1/4-18	26.8	17	0.07
A-0506-MNPT	05	5/16	7.9	06	3/8-18	27.8	19	0.11
A-0604-MNPT	06	3/8	9.5	04	1/4-18	26.8	17	0.07
A-0606-MNPT	06	3/8	9.5	06	3/8-18	27.8	19	0.09
A-0608-MNPT	06	3/8	9.5	08	1/2-14	31.3	22	0.15
A-0806-MNPT	08	1/2	12.7	06	3/8-18	28.6	19	0.12
A-0808-MNPT	08	1/2	12.7	08	1/2-14	32.1	22	0.17
A-0812-MNPT	08	1/2	12.7	12	3/4-14	34.1	27	0.22
A-1012-MNPT	10	5/8	15.9	12	3/4-14	34.1	27	0.24
A-1212-MNPT	12	3/4	19.0	12	3/4-14	34.6	27	0.26

Larger sizes available, please contact sales@plastixs.com for more information.

Because we continually examine ways to improve our products, we reserve the right to alter specifications without notice. KAHCCA0119

Hydraulic Hoses and Accessories

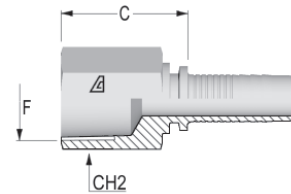
Inserts for two-piece fittings – US End Configurations



NPTF Male Swivel 60° Seat

Part Number	Dash Size	Hose ID Size		F Thread		C Cut-Off Factor (mm)	Hex Dia. CH1 (mm)	Weight Each (lbs)
		(in)	(mm)	Dash Size	Size (in TPI)			
A-0404-MNPS	04	1/4	6.4	04	1/4-18	37.6	17	0.09
A-0604-MNPS	06	3/8	9.5	04	1/4-18	39.6	17	0.12
A-0606-MNPS	06	3/8	9.5	06	3/8-18	37.5	22	0.15
A-0806-MNPS	08	1/2	12.7	06	3/8-18	38.3	22	0.17
A-0808-MNPS	08	1/2	12.7	08	1/2-14	42.3	25	0.25
A-1212-MNPS	12	3/4	19.0	12	3/4-14	50.1	32	0.31

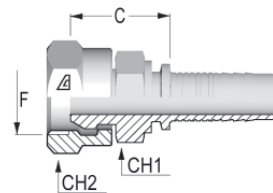
Larger sizes available, please contact sales@plastixs.com for more information.



NPTF Solid Female Rigid

Part Number	Dash Size	Hose ID Size		F Thread		C Cut-Off Factor (mm)	Hex Dia. CH1 (mm)	Weight Each (lbs)
		(in)	(mm)	Dash Size	Size (in TPI)			
A-0404-FNPR	04	1/4	6.4	04	1/4-18	27.8	19	0.10
A-0606-FNPR	06	3/8	9.5	06	3/8-18	28.8	22	0.17
A-0808-FNPR	08	1/2	12.7	08	1/2-14	35.6	25	0.20
A-1212-FNPR	12	3/4	19.0	12	3/4-14	38.1	32	0.35

Larger sizes available, please contact sales@plastixs.com for more information.

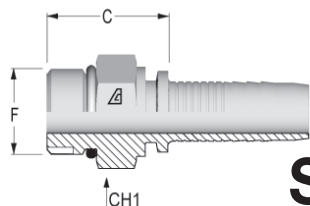


NPSM Female Swivel 60° Seat

Part Number	Dash Size	Hose ID Size		F Thread		C Cut-Off Factor (mm)	Hex Dia. CH1 (mm)	Hex Dia. CH2 (mm)	Weight Each (lbs)
		(in)	(mm)	Dash Size	Size (in TPI)				
A-0404-FPMS	04	1/4	6.4	04	1/4-18	24.3	17	19	0.09
A-0606-FPMS	06	3/8	9.5	06	3/8-18	24.8	19	22	0.14
A-0808-FPMS	08	1/2	12.7	08	1/2-14	26.6	22	27	0.22

Larger sizes available, please contact sales@plastixs.com for more information.

Hydraulic Hoses and Accessories

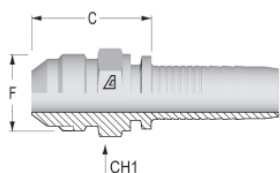


SAE Solid Male O-Ring Boss

Part Number	Dash Size	Hose ID Size		F Thread		C Cut-Off Factor (mm)	Hex Dia. CH1 (mm)	Weight Each (lbs)
		(in)	(mm)	Dash Size	Size (in TPI)			
A-0404-MORB	04	1/4	6.4	04	7/16-20	20.3	14	0.04
A-0405-MORB	04	1/4	6.4	05	1/2-20	21.3	16	0.05
A-0406-MORB	04	1/4	6.4	06	9/16-18	22.3	17	0.06
A-0606-MORB	06	3/8	9.5	06	9/16-18	23.3	19	0.08
A-0608-MORB	06	3/8	9.5	08	3/4-16	24.3	22	0.12
A-0610-MORB	06	3/8	9.5	10	7/8-14	26.8	27	0.16
A-0808-MORB	08	1/2	12.7	08	3/4-16	25.1	22	0.14
A-0810-MORB	08	1/2	12.7	10	7/8-14	27.6	27	0.19
A-0812-MORB	08	1/2	12.7	12	1 1/16-12	32.1	32	0.28
A-1210-MORB	12	3/4	19.0	10	7/8-14	28.1	27	0.24
A-1212-MORB	12	3/4	19.0	12	1 1/16-12	32.6	32	0.31
A-1216-MORB	12	3/4	19.0	16	1 5/16-12	35.7	38	0.44

Larger sizes available, please contact sales@plastixs.com for more information.

Inserts for two-piece fittings – US End Configurations



JIC Solid Male 37° Seat

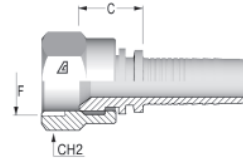
Part Number	Dash Size	Hose ID Size		F Thread		C Cut-Off Factor (mm)	Hex Dia. CH1 (mm)	Weight Each (lbs)
		(in)	(mm)	Dash Size	Size (in TPI)			
A-0404-MJIC	04	1/4	6.4	04	7/16-20	25.3	12	0.04
A-0405-MJIC	04	1/4	6.4	05	1/2-20	25.3	14	0.05
A-0406-MJIC	04	1/4	6.4	06	9/16-18	26.3	17	0.06
A-0505-MJIC	05	5/16	7.9	05	1/2-20	25.3	14	0.05
A-0506-MJIC	05	5/16	7.9	06	9/16-18	26.3	17	0.07
A-0606-MJIC	06	3/8	9.5	06	9/16-18	26.3	17	0.07
A-0608-MJIC	06	3/8	9.5	08	3/4-16	29.8	19	0.11
A-0808-MJIC	08	1/2	12.7	08	3/4-16	29.8	19	0.12
A-0810-MJIC	08	1/2	12.7	10	7/8-14	34.6	24	0.19
A-0812-MJIC	08	1/2	12.7	12	1 1/16-12	37.1	27	0.23
A-1212-MJIC	12	3/4	19.0	12	1 1/16-12	37.6	27	0.27
A-1214-MJIC	12	3/4	19.0	14	1 3/16-12	40.1	32	0.36
A-1216-MJIC	12	3/4	19.0	16	1 5/16-12	42.6	36	0.54

Larger sizes available, please contact sales@plastixs.com for more information.

Because we continually examine ways to improve our products, we reserve the right to alter specifications without notice. KAHCCA0119

Hydraulic Hoses and Accessories

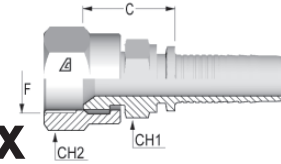
JIC Female 37° Seat



Part Number	Dash Size	Hose ID Size		F Thread		C Cut-Off Factor (mm)	Hex Dia. CH2 (mm)	Weight Each (lbs)
		(in)	(mm)	Dash Size	Size (in TPI)			
A-0304-FJSH	03	3/16	4.8	04	7/16-20	14.3	16	0.04
A-0404-FJSH	04	1/4	6.4	04	7/16-20	14.6	16	0.04
A-0405-FJSH	04	1/4	6.4	05	1/2-20	15.3	17	0.06
A-0406-FJSH	04	1/4	6.4	06	9/16-18	15.3	19	0.07
A-0505-FJSH	05	5/16	7.9	05	1/2-20	15.3	17	0.07
A-0506-FJSH	05	5/16	7.9	06	9/16-18	15.3	19	0.08
A-0606-FJSH	06	3/8	9.5	06	9/16-18	15.3	19	0.08
A-0608-FJSH	06	3/8	9.5	08	3/4-16	17.8	25	0.14
A-0808-FJSH	08	1/2	12.7	08	3/4-16	18.6	25	0.16
A-0810-FJSH	08	1/2	12.7	10	7/8-14	19.6	27	0.19
A-0812-FJSH	08	1/2	12.7	12	1 1/16-12	22.1	32	0.25
A-1210-FJSH	12	3/4	19.0	10	7/8-14	20.0	27	0.28
A-1212-FJSH	12	3/4	19.0	12	1 1/16-12	20.0	32	0.28
A-1214-FJSH	12	3/4	19.0	14	1 3/16-12	20.0	36	0.33
A-1216-FJSH	12	3/4	19.0	16	1 5/16-12	22.1	38	0.38

Larger sizes available, please contact sales@plastixs.com for more information.

JIC Female 37° Seat – Double Hex



Part Number	Dash Size	Hose ID Size		F Thread		C Cut-Off Factor (mm)	Hex Dia. CH1 (mm)	Hex Dia. CH2 (mm)	Weight Each (lbs)
		(in)	(mm)	Dash Size	Size (in TPI)				
A-0404-FJDH	04	1/4	6.4	04	7/16-20	19.6	14	16	0.06
A-0405-FJDH	04	1/4	6.4	05	1/2-20	20.3	14	17	0.07
A-0406-FJDH	04	1/4	6.4	06	9/16-18	20.3	14	19	0.09
A-0506-FJDH	05	5/16	7.9	06	9/16-18	20.3	14	19	0.08
A-0606-FJDH	06	3/8	9.5	06	9/16-18	21.3	17	19	0.10
A-0608-FJDH	06	3/8	9.5	08	3/4-16	24.8	19	25	0.17
A-0610-FJDH	06	3/8	9.5	10	7/8-14	25.8	22	22	0.20
A-0806-FJDH	08	1/2	12.7	06	9/16-18	23.1	19	19	0.15
A-0808-FJDH	08	1/2	12.7	08	3/4-16	25.6	19	25	0.20
A-0810-FJDH	08	1/2	12.7	10	7/8-14	26.6	22	27	0.22
A-0812-FJDH	08	1/2	12.7	12	1 1/16-12	28.1	25	32	0.30
A-1210-FJDH	12	3/4	19.0	10	7/8-14	28.1	27	32	0.31
A-1212-FJDH	12	3/4	19.0	12	1 1/16-12	28.6	27	32	0.35
A-1214-FJDH	12	3/4	19.0	14	1 3/16-12	29.9	32	36	0.44
A-1216-FJDH	12	3/4	19.0	16	1 5/16-12	32.1	32	38	0.49

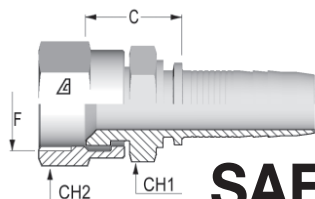
Larger sizes available, please contact sales@plastixs.com for more information.

Because we continually examine ways to improve our products, we reserve the right to alter specifications without notice.

KAHCCA0119

Hydraulic Hoses and Accessories

Inserts for two-piece fittings – US End Configurations



SAE Female 45° Seat – Double Hex

Part Number	Dash Size	Hose ID Size		F Thread		C Cut-Off Factor (mm)	Hex Dia. CH1 (mm)	Hex Dia. CH2 (mm)	Weight Each (lbs)
		(in)	(mm)	Dash Size	Size (in TPI)				
A-0606-FSAE	06	3/8	9.5	06	5/8-18	22.3	19	22	0.14
A-1212-FSAE	12	3/4	19.0	12	1 1/16-14	29.6	27	32	0.35

Larger sizes available, please contact sales@plastixs.com for more information.

Quick Release Couplings

For fast and easy connections of hydraulic hoses, the ALFAGOMMA® range of fluid components includes the ARGUS series of quick disconnect couplings, with products complying to international standards ISO 7241-1 A & B, ISO 5675 and ISO 16028, having poppet and flat face valve respectively.

TOP COAT TREATMENT

Thanks to the exclusive ALFAGOMMA® **TOP COAT** – Galvanic Coating – proprietary technology, the complete range of ARGUS Quick release couplings can boast an extraordinary wear and corrosion resistance, so as to guarantee a longer lifespan to your system.

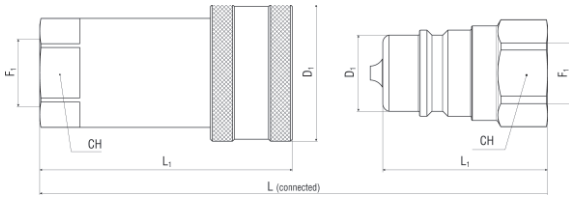
Quick Release Couplings

Poppet Valve

QP

POPPET INDUSTRY STANDARD ISO 5675

AG INTERCHANGE



INDUSTRY STANDARD - POPPET QP

Female coupling - Female thread

Item Code	⊗			Working Pressure psi	Burst Pressure psi	Thread 1	F1	D1 mm	CH mm	L1 mm	L mm
	Dash	mm	in								
QPF-0404-FNPR	04	6.0	1/4	5075	20300	NPTF	1/4-18	27.6	19.0	53.5	72.00
QPF-0606-FNPR	06	10.0	3/8	3915	15660	NPTF	3/8-18	34.0	24.0	63.0	83.00
QAF-0808-FNPR	08	13.0	1/2	3915	15660	NPTF	1/2-14	38.5	27.0	66.0	88.20
QPF-1212-FNPR	12	19.0	3/4	2900	11600	NPTF	3/4-14	48.2	34.0	82.5	108.00
QPF-1616-FNPR	16	25.0	1	2900	11600	NPTF	1-11 1/2	56.5	41.0	96.5	127.00

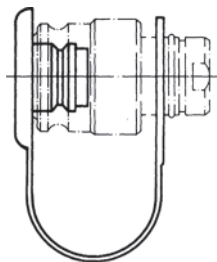
Other threads available. Please consult factory.

INDUSTRY STANDARD - POPPET QP

Male coupling - Female thread

Item Code	⊗			Working Pressure psi	Burst Pressure psi	Thread 1	F1	D1 mm	CH mm	L1 mm	L mm
	Dash	mm	in								
QPM-0404-FNPR	04	6.0	1/4	5075	20300	NPTF	1/4-18	14.1	19.0	36.0	72.00
QPM-0606-FNPR	06	10.0	3/8	3915	15660	NPTF	3/8-18	18.9	24.0	40.0	83.00
QAM-0808-FNPR	08	13.0	1/2	3915	15660	NPTF	1/2-14	20.5	27.0	44.0	88.20
QPM-1212-FNPR	12	19.0	3/4	2900	11600	NPTF	3/4-14	27.9	34.0	49.0	108.00
QPM-1616-FNPR	16	25.0	1	2900	11600	NPTF	1-11 1/2	31.3	41.0	64.0	127.00

Other threads available. Please consult factory.

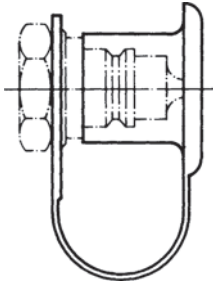


INDUSTRY STANDARD - POPPET QP and BALL QT

Dust plug for female coupling

Item Code	Color	Material	⊗		
			Dash	mm	in
QPP-04	RED	PE	04	6.0	1/4
QPP-06	RED	PE	06	10.0	3/8
QAP-08	RED	PE	08	13.0	1/2
QPP-12	RED	PE	12	19.0	3/4
QPP-16	RED	PE	16	25.0	1

Quick Release Couplings



INDUSTRY STANDARD - POPPET QP and BALL QT

Dust plug for male coupling

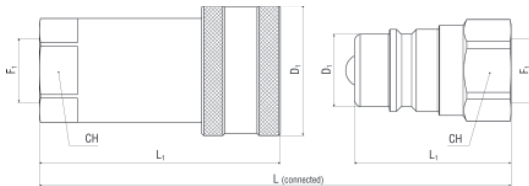
Item Code	Color	Material	⊗		
			Dash	mm	in
QPC-04	RED	PE	04	6.0	1/4
QPC-06	RED	PE	06	10.0	3/8
QAC-08	RED	PE	08	13.0	1/2
QPC-12	RED	PE	12	19.0	3/4
QPC-16	RED	PE	16	25.0	1

Ball Valve

QT

BALL INDUSTRY STANDARD ISO 5675

AG INTERCHANGE



INDUSTRY STANDARD - POPPET QT

Female coupling - Female thread

Item Code	⊗			Working Pressure psi	Burst Pressure psi	Thread 1	F1	D1	CH	L1	L
	Dash	mm	in								
QTF-0404-FNPR	04	6.0	1/4	5075	20300	NPTF	1/4-18	27.6	19.0	53.5	72.00
QTF-0606-FNPR	06	10.0	3/8	3915	15660	NPTF	3/8-18	34.0	24.0	63.0	83.00
QTF-0808-FNPR	08	13.0	1/2	3915	15660	NPTF	1/2-14	38.5	27.0	66.0	88.20
QTF-1212-FNPR	12	19.0	3/4	2900	11600	NPTF	3/4-14	48.2	34.0	82.5	108.00
QTF-1616-FNPR	16	25.0	1	2900	11600	NPTF	1-11 1/2	56.5	41.0	96.5	127.00

Other threads available. Please consult factory. For Dust Plugs refer to QPP and QAP on page 48.

INDUSTRY STANDARD - POPPET QT

Male coupling - Female thread

Item Code	⊗			Working Pressure psi	Burst Pressure psi	Thread 1	F1	D1	CH	L1	L
	Dash	mm	in								
QTM-0404-FNPR	04	6.0	1/4	5075	20300	NPTF	1/4-18	14.1	19.0	36.0	72.00
QTM-0606-FNPR	06	10.0	3/8	3915	15660	NPTF	3/8-18	18.9	24.0	40.0	83.00
QTM-0808-FNPR	08	13.0	1/2	3915	15660	NPTF	1/2-14	20.5	27.0	44.0	88.20
QTM-1212-FNPR	12	19.0	3/4	2900	11600	NPTF	3/4-14	27.9	34.0	49.0	108.00
QTM-1616-FNPR	16	25.0	1	2900	11600	NPTF	1-11 1/2	31.3	41.0	64.0	127.00

Other threads available. Please consult factory. For Dust Plugs refer to QPP and QAP on page 48.

Because we continually examine ways to improve our products, we reserve the right to alter specifications without notice.

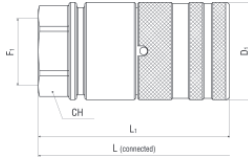
KAHCCA0119

Quick Release Couplings

Flat Face

QF TOP COAT PATENT PENDING

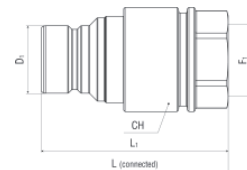
FLAT FACE STANDARD ISO 16028



STANDARD ISO 16028 - FLAT FACE QF
Female coupling - Female thread

Item Code	⊗			Working Pressure psi	Burst Pressure psi	Thread 1	F1	D1	CH	L1	L
	Dash	mm	in								
QFF-0404-FNPR	04	6.0	1/4	5075	20300	NPTF	1/4-18	26.0	22.0	57.8	97.00
QFF-0606-FNPR	06	10.0	3/8	5075	20300	NPTF	3/8-18	32.0	27.0	69.3	117.00
QFF-0608-FNPR	06	10.0	3/8	5075	20300	NPTF	1/2-14	32.0	27.0	69.3	117.00
QFF-0808-FNPR	08	13.0	1/2	5075	20300	NPTF	1/2-14	38.0	32.0	74.5	125.00
QFF-0812-FNPR	08	13.0	1/2	5075	20300	NPTF	3/4-14	38.0	32.0	74.5	125.00
QFF-1012-FNPR	10	16.0	5/8	5075	20300	NPTF	3/4-14	40.0	34.0	81.3	134.00
QFF-1212-FNPR	12	19.0	3/4	5075	20300	NPTF	3/4-14	48.0	42.0	93.0	156.00
QFF-1216-FNPR	12	19.0	3/4	5075	20300	NPTF	1-11 1/2	48.0	42.0	93.0	156.00
QFF-1616-FNPR	16	25.0	1	5075	20300	NPTF	1-11 1/2	55.0	50.0	101.0	177.00
QFF-1620-FNPR	16	25.0	1	5075	20300	NPTF	1 1/4-11 1/2	55.0	50.0	101.0	177.00
QFF-0404-FORB	04	6.0	1/4	5075	20300	SAE-OB	7/16-20	26.0	22.0	57.8	97.00
QFF-0406-FORB	04	6.0	1/4	5075	20300	SAE-OB	9/16-18	26.0	22.0	57.8	97.00
QFF-0606-FORB	06	10.0	3/8	5075	20300	SAE-OB	9/16-18	32.0	27.0	71.3	119.00
QFF-0608-FORB	06	10.0	3/8	5075	20300	SAE-OB	3/4-16	32.0	27.0	72.3	121.00
QFF-0808-FORB	08	13.0	1/2	5075	20300	SAE-OB	3/4-16	38.0	32.0	74.5	125.00
QFF-0810-FORB	08	13.0	1/2	5075	20300	SAE-OB	7/8-14	38.0	32.0	74.5	125.00
QFF-0812-FORB	08	13.0	1/2	5075	20300	SAE-OB	1 1/16-12	38.0	32.0	80.5	137.00
QFF-1012-FORB	10	16.0	5/8	5075	20300	SAE-OB	1 1/16-12	40.0	34.0	90.3	153.00
QFF-1212-FORB	12	19.0	3/4	5075	20300	SAE-OB	1 1/16-12	48.0	42.0	95.5	160.50
QFF-1216-FORB	12	19.0	3/4	5075	20300	SAE-OB	1 5/16-12	48.0	42.0	97.5	164.50
QFF-1616-FORB	16	25.0	1	5075	20300	SAE-OB	1 5/16-12	55.0	50.0	107.3	185.30
QFF-1620-FORB	16	25.0	1	5075	20300	SAE-OB	1 5/8-12	55.0	50.0	109.3	187.30

NPTF connection according to ANSI B1-20.3, SAE UNF/UN connection according to SAE J 1926-1. Other threads available. Please consult factory.



STANDARD ISO 16028 - FLAT FACE QF
Male coupling - Female thread


Item Code	⊗			Working Pressure psi	Burst Pressure psi	Thread 1	F1	D1	CH	L1	L
	Dash	mm	in								
QFM-0404-FNPR	04	6.0	1/4	5075	20300	NPTF	1/4-18	16.2	20.0	50.5	97.00
QFM-0606-FNPR	06	10.0	3/8	5075	20300	NPTF	3/8-18	19.7	27.0	64.0	117.00
QFM-0608-FNPR	06	10.0	3/8	5075	20300	NPTF	1/2-14	19.7	27.0	64.0	117.00

Because we continually examine ways to improve our products, we reserve the right to alter specifications without notice. KAHCCA0119

Quick Release Couplings

STANDARD ISO 16028 - FLAT FACE QF (continued)

Male coupling - Female thread

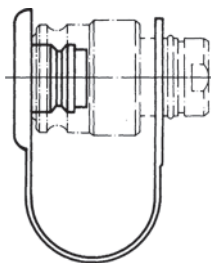
Item Code				Working Pressure psi	Burst Pressure psi	Thread 1	F1	D1 mm	CH mm	L1 mm	L mm
	Dash	mm	in								
QFM-0808-FNPR	08	13.0	1/2	5075	20300	NPTF	1/2-14	24.6	32.0	68.0	125.00
QFM-0812-FNPR	08	13.0	1/2	5075	20300	NPTF	3/4-14	24.6	32.0	68.0	125.00
QFM-1012-FNPR	10	16.0	5/8	5075	20300	NPTF	3/4-14	27.0	34.0	70.0	134.00
QFM-1212-FNPR	12	19.0	3/4	5075	20300	NPTF	3/4-14	29.9	42.0	85.0	156.00
QFM-1216-FNPR	12	19.0	3/4	5075	20300	NPTF	1-11 1/2	29.9	42.0	85.0	156.00
QFM-1616-FNPR	16	25.0	1	5075	20300	NPTF	1-11 1/2	36.0	50.0	99.0	177.00
QFM-1620-FNPR	16	25.0	1	5075	20300	NPTF	1 1/4-11 1/2	36.0	50.0	99.0	177.00
QFM-0404-FORB	04	6.0	1/4	5075	20300	SAE-OB	7/16-20	16.2	20.0	50.5	97.00
QFM-0406-FORB	04	6.0	1/4	5075	20300	SAE-OB	9/16-18	16.2	20.0	50.5	97.00
QFM-0606-FORB	06	10.0	3/8	5075	20300	SAE-OB	9/16-18	19.7	27.0	64.0	119.00
QFM-0608-FORB	06	10.0	3/8	5075	20300	SAE-OB	3/4-16	19.7	27.0	65.0	121.00
QFM-0808-FORB	08	13.0	1/2	5075	20300	SAE-OB	3/4-16	24.6	32.0	72.0	125.00
QFM-0810-FORB	08	13.0	1/2	5075	20300	SAE-OB	7/8-14	24.6	32.0	72.0	125.00
QFM-0812-FORB	08	13.0	1/2	5075	20300	SAE-OB	1 1/16-12	24.6	32.0	78.0	137.00
QFM-1012-FORB	10	16.0	5/8	5075	20300	SAE-OB	1 1/16-12	27.0	34.0	80.0	153.00
QFM-1212-FORB	12	19.0	3/4	5075	20300	SAE-OB	1 1/16-12	29.9	42.0	87.0	160.50
QFM-1216-FORB	12	19.0	3/4	5075	20300	SAE-OB	1 5/16-12	29.9	42.0	89.0	164.50
QFM-1616-FORB	16	25.0	1	5075	20300	SAE-OB	1 5/16-12	36.0	50.0	99.0	185.30
QFM-1620-FORB	16	25.0	1	5075	20300	SAE-OB	1 5/8-12	55.0	50.0	109.3	187.30


NPTF connection according to ANSI B1-20.3, SAE UNF/UN connection according to SAE J 1926-1.

Other threads available. Please consult factory.

STANDARD ISO 16028 - FLAT FACE QF

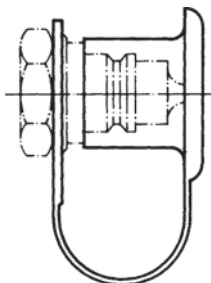
Dust cap for female coupling




Item Code	Color	Material			
			Dash	mm	in
QFP-04	RED	PE	04	6.0	1/4"
QFP-06	RED	PE	06	10.0	3/8"
QFP-08	RED	PE	08	13.0	1/2"
QFP-10	RED	PE	10	16.0	5/8"
QFP-12	RED	PE	12	19.0	3/4"
QFP-16	RED	PE	16	25.0	1"

STANDARD ISO 16028 - FLAT FACE QF

Dust cap for male coupling



Item Code	Color	Material			
			Dash	mm	in
QFC-04	RED	PE	04	6.0	1/4"
QFC-06	RED	PE	06	10.0	3/8"
QFC-08	RED	PE	08	13.0	1/2"
QFC-10	RED	PE	10	16.0	5/8"
QFC-12	RED	PE	12	19.0	3/4"
QFC-16	RED	PE	16	25.0	1"

Technical Information

Hose Material Selection Guide

Hose Series	Inner Tube Material	General Applications	Dilute Water Based Agricultural Chemicals (Wettable Powders)	Dilute Oil Based Agricultural Chemicals (Emulsifiable Liquids)	Concentrated Agricultural Chemicals	Liquid Manure	Oil & Gas
T505	XLPE	Transfer of concentrated agricultural chemicals	Excellent	Excellent	Excellent	Excellent	Good
A4083 & A4086	LLDPE/Rubber	Transfer of oil based agricultural chemicals (wettable powders)	Excellent	Good	Limited	Good	Good
A1661 & A1687	PVC/TPU	Transfer of water based agricultural chemicals (emulsifiable liquids)	Good	Excellent	Limited	Good	Excellent
K4350	EVA	Water and dilute chemical transfer	Good	Good	Limited	Limited	Good
BEGP, REGP, TG, AG, TSD, T202 & T253	EPDM	Water and dilute chemical transfer	Good	Good	Limited	Excellent	Limited
OF10, OF20, OF20Y, BD & OFDG	PVC/NBR	Water and liquid manure transfer	Good	Good	Limited	Excellent	Good
SLR, SG & WST-SLR	PVC (Enhanced UV resistance)	Water and dilute liquid fertilizer transfer	Good	Limited	Limited	Limited	Poor
K4131, K4132, K4137, EG, EGW, H, J, K, BW	PVC	Water and dilute liquid fertilizer transfer	Good	Limited	Limited	Limited	Poor
K050, K3150, FT & WSTF	PVC (food grade)	Water, dairy and other liquid food transfer	Good	Limited	Limited	Limited	Poor
BLKFT & BL	NBR	Transfer of oil & petroleum products	Limited	Limited	Poor	Poor	Excellent
T405	NBR (food grade)	Transfer of fatty, oily and alcoholic liquids	Limited	Limited	Poor	Poor	Excellent

Layflat Hose Selection Guide

Product Name	Hose Series	Tube Material	General Applications	Overall Durability	Drag Application Suitability	Water	Liquid Manure
Oroflex® Drag	OFDG	TPU	Manure spreaders	Excellent	Excellent	Excellent	Excellent
Oroflex® Bandama	BD	PVC/NBR	Traveling irrigators	Excellent	Very Good	Excellent	Excellent
Oroflex® 20	OF20B & OF20Y	PVC/NBR	Water & liquid manure transfer	Excellent	Good	Excellent	Excellent
Oroflex® 10	OF10	PVC/NBR	Water	Very Good	Limited	Excellent	Excellent
Alfagamma® T253	T253	EPDM	Water and dilute agricultural liquid chemical transfer	Very Good	Limited	Excellent	Limited
Ironsides™	IS	PVC	Water transfer and mining applications	Good	Limited	Excellent	Limited
Tuffsides™	TS	PVC	Water transfer	Good	Limited	Excellent	Limited
Vinylflow™ & Vinylgreen™	VF, VG & LF	PVC	Water transfer and drip irrigation	Standard	Limited	Excellent	Limited

Because we continually examine ways to improve our products, we reserve the right to alter specifications without notice. KAHCCA0119

Technical Information

Friction Loss of PVC Layflat Hose (psi/100 ft.)

GPM	1.5"	2"	2.5"	3"	4"	6"	8"	10"	12"	14"	16"
20	1.2										
30	2.4										
40	5.1	1.1									
50	6.0										
60		2.4	1.4								
80		4.1	1.9	1.0							
90	17.0										
100		6.0	2.8	1.2							
120				1.8							
140				2.2							
160				2.6	0.6						
180				3.3	0.7						
200		22	7		0.8						
220					1.0						
240					1.1		0.2				
250				5							
260					1.3	0.2					
280					1.4	0.2					
300					1.6	0.2					
340						0.3					
350			22								
380						0.4					
420						0.5					
460						0.6					
500					4	0.7					
540						0.8					
580					22	0.9					
620						1.0					
660						1.1					
1,200						3.0					
1,250					22						
1,800							1.5				
2,500								1.0			
3,500									0.8		
3,630						22					
5,000							11			0.6	
6,000											0.4
8,000								8			
12,000									8		
15,000										5	
16,000											30

Technical Information

Friction Loss of PVC/Nitrile Layflat Hose in (psi/100 ft.)

GPM	1	1 1/4	1 1/2	1 3/4	2	2 1/2	3	3 1/2	4	4 1/2	5	6	8	10	12
1	0.04														
2	0.15	0.05	0.02												
5	0.82	0.28	0.11	0.05	0.03										
7	1.53	0.52	0.21	0.10	0.05	0.02									
10	2.96	1.00	0.41	0.19	0.10	0.03	0.02								
15	6.27	2.11	0.87	0.41	0.21	0.07	0.05	0.03							
20	10.67	3.60	1.48	0.70	0.36	0.12	0.08	0.05							
25	16.13	5.44	2.24	1.06	0.55	0.19	0.12	0.08	0.04						
30	22.59	7.62	3.14	1.48	0.77	0.26	0.16	0.11	0.05	0.03					
35	30.05	10.14	4.17	1.97	1.03	0.35	0.22	0.14	0.07	0.04					
40	38.47	12.98	5.34	2.52	1.32	0.44	0.28	0.18	0.09	0.04					
45	47.84	16.14	6.64	3.13	1.64	0.55	0.35	0.23	0.11	0.06	0.03				
50	58.13	19.61	8.07	3.81	1.99	0.67	0.42	0.28	0.13	0.07	0.04				
60		27.48	11.31	5.34	2.79	0.94	0.59	0.39	0.18	0.10	0.05				
70		36.54	15.04	7.10	3.70	1.25	0.79	0.51	0.24	0.13	0.07	0.04			
80			19.25	9.09	4.74	1.60	1.01	0.66	0.31	0.16	0.09	0.05			
90			23.94	11.30	5.90	1.99	1.25	0.82	0.39	0.20	0.11	0.07			
100				13.73	7.17	2.42	1.52	0.99	0.47	0.25	0.14	0.08			
125				20.75	10.83	3.65	2.30	1.50	0.71	0.37	0.21	0.12	0.05		
150					15.17	5.12	3.22	2.11	0.99	0.52	0.29	0.18	0.07		
175					20.18	6.81	4.28	2.80	1.32	0.69	0.39	0.23	0.10		
200					25.84	8.71	5.48	3.59	1.69	0.88	0.50	0.30	0.12		
225					32.13	10.84	6.81	4.46	2.10	1.10	0.62	0.37	0.15		
250						13.17	8.28	5.42	2.56	1.33	0.75	0.45	0.19		
275						15.71	9.88	6.46	3.05	1.59	0.90	0.54	0.22	0.05	
300							11.60	7.59	3.58	1.87	1.05	0.63	0.26	0.06	
350							15.43	10.10	4.77	2.49	1.40	0.84	0.35	0.09	
400								12.93	6.10	3.18	1.79	1.07	0.44	0.11	
450								16.08	7.59	3.96	2.23	1.34	0.55	0.14	
500								19.54	9.22	4.81	2.71	1.62	0.67	0.16	0.06
600									12.92	6.74	3.80	2.27	0.94	0.23	0.08
700									17.18	8.97	5.05	3.03	1.24	0.31	0.10
800										11.48	6.47	3.87	1.59	0.39	0.13
1000										17.35	9.78	5.85	2.41	0.59	0.20
1200											13.70	8.20	3.37	0.83	0.28
1400												10.91	4.49	1.11	0.37
1600												13.96	5.75	1.42	0.48
1800													7.14	1.76	0.59
2000													8.68	2.14	0.72
2500													13.12	3.23	1.09
3000														4.53	1.53
3500														6.02	2.03
4000														7.71	2.60
4500															3.23
5000															3.93
5500															4.69
6000															5.51
6500															6.39
7000															7.32
7500															8.32
8000															9.38

Note: These calculations are theoretical and based on straight lines. Liquid is water at 20°C.
 Recommended maximum velocity for constant work: 11.5 ft/s (3.5m/s).
 Maximum recommended velocity for non constant work: 16.4 ft/s (5 m/s).
 Values in red match with flows given 16.4 ft/s (5 m/s).

Because we continually examine ways to improve our products, we reserve the right to alter specifications without notice. KAHCCA0119

Technical Information

VINYLFLOW® EZ-Lite™ Longitudinal Elongation (%) - (on flat ground only)

Size	PRESSURE (psi)					
	10	20	30	40	50	60
1 1/2"	0.00	0.10	0.20	0.30	0.40	0.60
2"	0.00	0.20	0.30	0.60	0.80	-
3"	0.20	0.40	0.80	1.20	-	-
4"	0.20	0.50	1.40	1.90	-	-
6"	0.00	0.40	0.80	1.40	-	-
8"	0.20	0.80	1.60	2.20	-	-

VINYLFLOW® Longitudinal Elongation (%) (on flat ground only)

Size	PRESSURE (psi)							
	10	20	30	40	50	60	70	80
1 1/2"	0.00	0.01	0.02	0.06	0.14	0.17	0.35	0.50
2"	0.01	0.03	0.04	0.15	0.32	0.38	0.61	0.84
2 1/2"	0.06	0.15	0.23	0.50	0.79	0.95	1.33	1.57
3"	0.03	0.14	0.21	0.34	0.63	0.76	1.10	-
4"	0.14	0.35	0.53	0.90	1.40	1.68	1.98	-
6"	0.14	0.42	0.63	1.08	1.35	-	-	-
8"	0.21	0.57	0.86	1.47	-	-	-	-
10"	0.15	0.39	0.59	-	-	-	-	-
12"	0.14	0.55	0.82	-	-	-	-	-
16"	0.00	0.28	0.42	-	-	-	-	-

REV. 11.08

IRONSIDES® Longitudinal Elongation (%) - (on flat ground only)

Size	PRESSURE (psi)														
	10	20	30	40	50	60	70	80	90	100	110	120	130	140	150
1 1/2"	0.00	0.10	0.10	0.20	0.30	0.36	0.40	0.50	0.60	0.60	0.80	0.90	0.90	1.00	1.10
2"	0.00	0.00	0.00	0.10	0.10	0.10	0.20	0.40	0.60	0.60	0.70	0.80	0.80	0.90	1.10
2 1/2"	0.00	0.00	0.10	0.20	0.30	0.40	0.40	0.60	0.60	0.80	1.00	1.10	1.10	1.30	1.30
3"	0.00	0.10	0.10	0.20	0.30	0.40	0.50	0.50	0.60	0.70	0.80	1.00	1.10		
4"	0.00	0.10	0.20	0.30	0.40	0.50	0.70	0.80	0.90	1.20	1.30	1.40	1.40		
6"	0.00	0.10	0.30	0.50	0.50	0.60	0.80	0.90	1.00	1.20					
8"	0.10	0.20	0.50	0.80	1.00	1.20	1.50	0.00							

For sloped ground, add the head pressure shown below:

Slope Angle	Hose Series	Additional Head Pressure (psi) per 300 ft.
5°	VF, VFL, IS, TS, VG	11
10°		23
15°		34
20°		44
25°		55
30°		65
35°		75
40°		83

Layflat Hose ID Size Guide

Hose ID	3/4	1	1-1/2	2	3	4	5	6	8	10	12	14	16
Hose Width When Flat	5/8	1-5/8	2-1/2	3-1/2	5	6-1/2	8	9-1/2	13	16	19	22	25

Cautionary Statement

All Products sold and distributed by Kuriyama of America, Inc. are in the nature of commodities and they are sold by published specifications and not for particular purposes, uses or applications. Purchaser shall first determine their suitability for the intended purposes, uses or applications and shall either conduct its own engineering studies or tests, or retain qualified engineers, consultants or testing laboratories and consult with them before determining the proper use, suitability or propriety of the merchandise or Products for the intended purposes, uses or applications.

Kuriyama of America, Inc. ("Seller") does not recommend the Products for any particular purpose, use or application, and the Purchaser or user thereof shall assume full responsibility for the suitability, propriety, use and application of the Products. Purchaser shall follow all instructions contained in Seller's catalogs, brochures, technical bulletins and other documents regarding the Products. The Products, including but not limited to, hose, tubing or couplings, may fail due to the use or conveyance of substances at elevated or lowered temperatures or at excessive pressure, the conveyance of abrasive, injurious, flammable, explosive or damaging substances.

Hose or tubing used in bent configurations will be subjected to increased abrasion. Hose clamps or couplings may loosen after initial installation and all sections of hose and tubing including connections, couplings, clamps, conductivity and bonding should be inspected frequently, regularly and consistently, and should be replaced, adjusted or re-tightened for the avoidance of leakage, for the prevention of injuries or damages, and for general safety purposes. Except as indicated in its Limited Warranty, Seller shall not be liable or responsible for direct or indirect injuries or damages caused by or attributed to the failure or malfunction of any Products sold or distributed by it.

Purchasers or users of the Products should frequently and consistently undertake inspections and protective measures with respect to the use and application of Products, which should include the examination of tube and cover, conditions of the hose or tubing, and the identification, repair or replacement of sections showing cracking, blistering, separations, internal and external abrasions, leaking or slipped couplings or connections and make proper proof tests.

Limited Warranty

The Products sold or distributed by Seller are warranted to its customers to be free from defects in material and workmanship at the time of shipment by us, subject to the following provisions. ALL WARRANTY CLAIMS SHALL BE MADE WITHIN SIX (6) MONTHS AFTER SELLER SHIPPED THE PRODUCTS. SELLER'S LIABILITY HEREUNDER IS LIMITED AT SELLER'S EXCLUSIVE DISCRETION, TO 1) THE PURCHASE PRICE OF ANY PRODUCTS PROVING DEFECTIVE; 2) REPAIR OF ANY DEFECTIVE PRODUCT OR PART THEREOF; OR 3) REPLACEMENT OF ANY DEFECTIVE PRODUCT OR PART UPON ITS AUTHORIZED RETURN TO SELLER.

THIS WARRANTY IS IN LIEU OF AND EXCLUDES ALL OTHER WARRANTIES, EXPRESSED, IMPLIED, STATUTORY, OR OTHERWISE CREATED UNDER APPLICABLE LAW INCLUDING, BUT NOT LIMITED TO, THE WARRANTY OF MERCHANTABILITY AND THE WARRANTY OF FITNESS FOR A PARTICULAR PURPOSE. IN NO EVENT SHALL SELLER OR THE MANUFACTURER OF THE PRODUCT BE LIABLE FOR SPECIAL, INCIDENTAL, OR CONSEQUENTIAL DAMAGES, INCLUDING LOSS OF PROFITS, WHETHER OR NOT CAUSED BY OR RESULTING FROM THE NEGLIGENCE OF SELLER AND/OR THE MANUFACTURER OF THE PRODUCT, UNLESS SPECIFICALLY PROVIDED HEREIN. IN ADDITION, THIS WARRANTY SHALL NOT APPLY TO ANY PRODUCTS OR PORTIONS THEREOF WHICH HAVE BEEN SUBJECTED TO ABUSE, MISUSE, IMPROPER INSTALLATION, MAINTENANCE, OR OPERATION, ELECTRICAL FAILURE OR ABNORMAL CONDITIONS, AND TO PRODUCTS WHICH HAVE BEEN TAMPERED WITH, ALTERED, MODIFIED, REPAIRED, REWORKED BY ANYONE NOT APPROVED BY SELLER, OR USED IN ANY MANNER INCONSISTENT WITH THE PROVISIONS OF THE "CAUTIONARY STATEMENT" ABOVE OR ANY INSTRUCTIONS OR SPECIFICATIONS PROVIDED WITH OR FOR THE PRODUCT.

9/17/18 REV

Distributed by:

plastixs[®]
manufacturing solutions

Plastixs, LLC • 151 Memorial Drive, Suite H • Shrewsbury • MA • 01545
888-792-2223 • www.plastixs.com • sales@plastixs.com



Kuriyama of America, Inc.



The trademarks contained in this publication are trademarks of Kuriyama of America, Inc.
The "Alfagomma" trademark contained in this publication is a registered trademark of Alfagomma S.p.A.