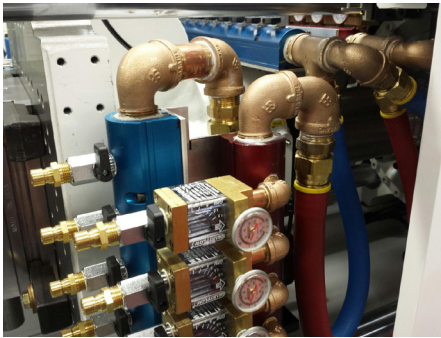




## Aluminum Manifold Assemblies



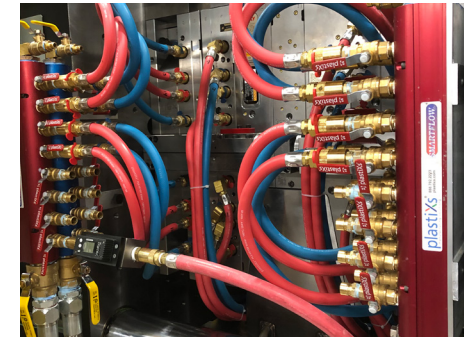
**1" Supply/Return Manifold Assemblies with Mechanical Flowmeters, Quick Connects and Brass Ball Valves**



**2" Manifold Assemblies with Mechanical Flowmeters, Quick Connects and Brass Ball Valves**



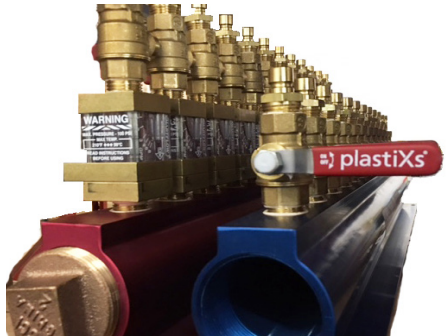
**1-1/2" Manifold Assemblies with Quick Connects, Brass Ball Valves and Brass Nipples**



**1-1/2" Manifold Assemblies with Quick Connects, Brass Ball Valves and HiTemp EPDM Hose**



**1" Manifold Assemblies with Brass Flow Regulators, Tracer Electronic Flowmeters, Quick Connects and Brass Ball Valves**



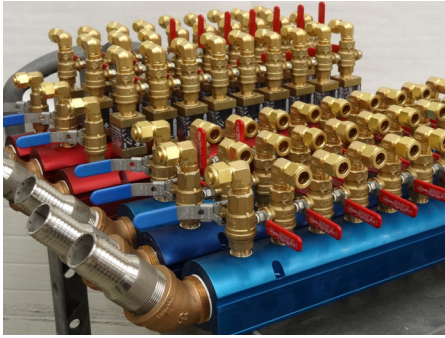
**2" Manifold Assemblies with Mechanical Flowmeters, Quick Connects and Brass Ball Valves**



**2" Manifold Assemblies with Mechanical Flowmeters, Quick Connects and Brass Ball Valves**



**1-1/2" Return Manifold Assembly with Mechanical Flowmeters, 90° Push to Connect Fittings, Brass Ball Valves and Regulating Valves**



**Assemblies with Mechanical Flowmeters, 90° Quick Connects and Brass Ball Valves**



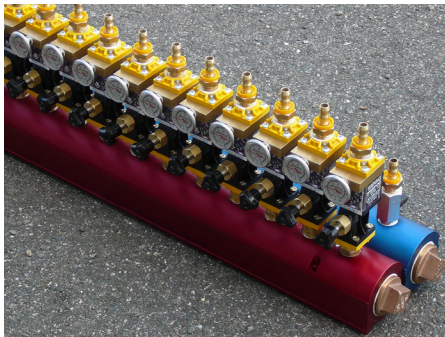
**1-1/2" Manifold Assemblies Mounted in a Control Cabinet with Brass Ball Valves and Custom Hose Assemblies**



**1" Manifold Assemblies with Quick Connects and Chrome Plated Mini Ball Valves**



**2" Manifold Assemblies with Mechanical Flowmeters, Quick Connects and Brass Ball Valves**



**1-1/2" Manifold Assemblies with Delta-Q Flow Regulators, Flowmeters with Temperature Gauges and Quick Connects**



**2" Manifold Assemblies with Quick Connects and Brass Ball Valves**



**1" Return Manifold Assembly with Delta-Q Flow Regulators, Flowmeters with Temperature Gauges and Chrome Plated Mini Ball Valves**



**1-1/2" Manifold Assemblies with Quick Connects, Brass Ball Valves and Valves Added for Purging**