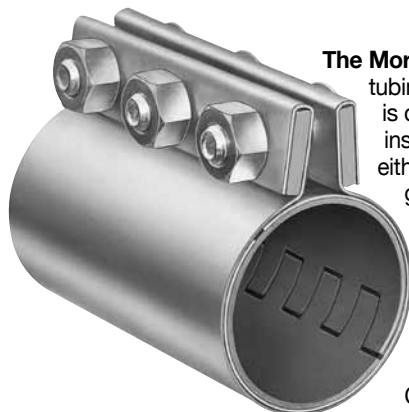


Compression Couplings For Tubing And Pipe

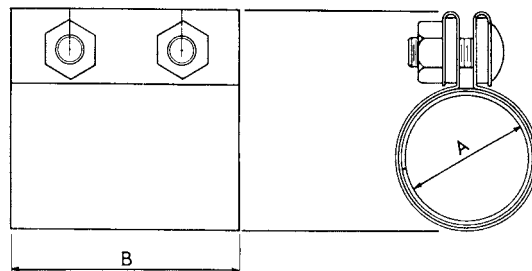


The Morris Compression tubing and pipe coupling is designed for permanent installation in the joining of either plain end, threaded, grooved or a combination of any of these joints. The band type construction holds the entire surface of the joint in uniform compression.

Couplings are made of heavy-gauge zinc-plated

steel...prices of aluminum or stainless-steel couplings quoted on request.

Gaskets furnished standard in red rubber or black neoprene...please specify. Gaskets also available in food grade, white neoprene and a variety of other materials at a slight extra charge.



Condensed Table Of Specifications

SIZE	Thickness		
	Shell	Sleeve	Gasket
1/2" - 2-7/8" OD	.052	.052	.062
3" OD	.052	.052	.093
3-1/4" - 5" OD	.062	.052	.093
5-1/4" - 8-5/8" OD	.062	.052	.125
9" - 24" OD	.062	.062	.125

Tubing or Nom. Pipe (IPS) Size	O.D. Tubing Pipe (A)	Morris Coupling Code	Coupling Length (B)	No. of Bolts	Size of Bolts	Weight Each (lbs.)	BLACK Neoprene Gasket*	FOOD-GRADE WHITE Neoprene Gasket*
							PIC No.	PIC No.
1/2" Pipe	.840	1/2-2C	2"	2	5/16 x 1-1/4	.5	0100842B2	0100842W2
3/4" Pipe	1.050	3/4-2C	2"	2	5/16 x 1-1/4	.7	0101052B2	0101052W2
1" Tubing	1.000	1-2C-OD	2"	2	5/16 x 1-1/4	1.6	0101002B2	0101002W2
1" Pipe	1.315	1-2C	4"	2	1/2 x 1-3/4	1.6	0101312B2	0101312W2
1-1/4" Tubing	1.250	1-1/4-2C-OD	4"	2	1/2 x 1-3/4	1.9	0101252B2	0101252W2
1-1/4" Pipe	1.660	1-1/4-2C	4"	2	1/2 x 1-3/4	1.8	0101662B2	0101662W2
	1.660	1-1/4-3C	6"	3	1/2 x 1-3/4	3.0	0101663B2	0101663W2
1-1/2" Tubing	1.500	1-1/2-2C-OD	4"	2	1/2 x 1-3/4	2.0	0101502B2FG	0101502W2
	1.500	1-1/2-3C-OD	6"	3	1/2 x 1-3/4	2.9	0101503B2FG	0101503W2
1-1/2" Pipe	1.900	1-1/2-2C	4"	2	1/2 x 1-3/4	2.0	0101902B2	0101902W2
	1.900	1-1/2-3C	6"	3	1/2 x 1-3/4	3.1	0101903B2	0101903W2
1-3/4" Tubing	1.750	1-3/4-2C-OD	4"	2	1/2 x 1-3/4	2.1	0101752B2FG	0101752W2
	1.750	1-3/4-3C-OD	6"	3	1/2 x 1-3/4	3.0	0101753B2FG	0101753W2FG
2" Tubing	2.000	2-2C-OD	4"	2	1/2 x 1-3/4	2.1	0102002B2FG	0102002W2
	2.000	2-3C-OD	6"	3	1/2 x 1-3/4	3.1	0102003B2FG	0102003W2FG
2" Pipe	2.375	2-2C	4"	2	1/2 x 1-3/4	2.2	0102372B2	0102372W2FG
	2.375	2-3C	6"	3	1/2 x 1-3/4	3.5	0102373B2FG	0102373W2FG
	2.375	2-4C	8"	4	1/2 x 1-3/4	4.7	0102374B2	0102374W2
2-1/8" Tubing	2.125	2-1/8-2C-OD	4"	2	1/2 x 1-3/4	2.1	0102122B2	0102122W2
	2.125	2-1/8-3C-OD	6"	3	1/2 x 1-3/4	3.2	0102123B2FG	0102123W2
2-3/16" Tubing	2.187	2-3/16-2C-OD	4"	2	1/2 x 1-3/4	2.2	0102182B2FG	0102182W2
	2.187	2-3/16-3C-OD	6"	3	1/2 x 1-3/4	3.3	0102183B2FG	0102183W2
2-1/4" Tubing	2.250	2-1/4-2C-OD	4"	2	1/2 x 1-3/4	2.2	0102252B2	0102252W2
	2.250	2-1/4-3C-OD	6"	3	1/2 x 1-3/4	3.3	0102253B2FG	0102253W2
2-1/2" Tubing	2.500	2-1/2-2C-OD	4"	2	1/2 x 1-3/4	2.6	0102502B2FG	0102502W2
	2.500	2-1/2-3C-OD	6"	3	1/2 x 1-3/4	3.4	0102503B2FG	0102503W2FG
2-1/2" Pipe	2.875	2-1/2-2C	4"	2	1/2 x 1-3/4	2.4	0102872B2	0102872W2
	2.875	2-1/2-3C	6"	3	1/2 x 1-3/4	3.7	0102873B2FG	0102873W2
	2.875	2-1/2-4C	8"	4	1/2 x 1-3/4	5.0	0102874B2	0102874W2
2-3/4" Tubing	2.750	2-3/4-3C-OD	6"	3	1/2 x 1-3/4	3.6	0102753B2	0102753W2
3" Tubing	3.000	3-2C-OD	4"	2	5/8 x 2	3.2	0103002B2FG	0103002W2
	3.000	3-3C-OD	6"	3	5/8 x 2	4.5	0103003B2FG	0103003W2FG
	3.000	3-4C-OD	8"	4	5/8 x 2	5.9	0103004B2FG	0103004W2FG
3" Pipe	3.500	3-2C	4"	2	5/8 x 2	3.4	0103502B2	0103502W2
	3.500	3-3C	6"	3	5/8 x 2	5.1	0103503B2FG	0103503W2FG
	3.500	3-4C	8"	4	5/8 x 2	6.6	0103504B2FG	0103504W2FG
3-1/4" Tubing	3.250	3-1/4-2C-OD	4"	2	5/8 x 2	3.5	0103252B2	0103252W2
	3.250	3-1/4-3C-OD	6"	3	5/8 x 2	5.0	0103253B2	0103253W2
	3.250	3-1/4-4C-OD	8"	4	5/8 x 2	6.5	0103254B2	0103254W2
3-1/2" Tubing	3.500	3-2C	4"	2	5/8 x 2	3.4	0103502B2	0103502W2
	3.500	3-3C	6"	3	5/8 x 2	5.1	0103503B2FG	0103503W2FG
	3.500	3-4C	8"	4	5/8 x 2	6.6	0103504B2FG	0103504W2FG

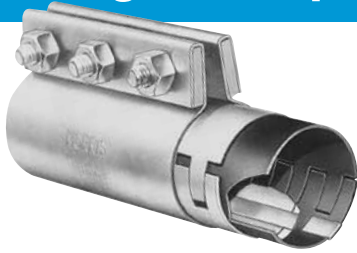
- WHEN ORDERING, always give the Code No. and O.D. of the pipe or tube on which coupling will be used.
- Prices for larger and/or special sizes available on request.

NOTE: When ordering GASKETS ONLY, please refer to page 6.

- (1) Same price applies for couplings with red rubber gaskets.
 - (2) Stainless steel grounding strips are standard on all couplings. Aluminum grounding strips or couplings without grounding strips available at same price.
- *Neoprene



Compression Couplings For Tubing And Pipe *continued*



To Prevent Static Electricity Build-up in Bulk Material Conveying Systems, specify Morris Compression Couplings with grounding strips. Be sure to state if your requirements call for aluminum or stainless steel strips. Stainless steel grounding strips are standard, aluminum grounding strips or couplings without grounding strips are available at the same price.

To Eliminate Gasket Wear, or contamination of material flowing through the system lines, specify Couplings with Stainless Steel GASKET PROTECTORS. (For prices, see page 4.)

Nom. Pipe (IPS) Size	Tubing or Tubing Pipe (A)	O.D. Morris Coupling Code	Coupling Length (B)	No. of Bolts	Size of Bolts	Weight Each (lbs.)	BLACK Neoprene Gasket*	FOOD-GRADE WHITE Neoprene Gasket*
							PIC No.	PIC No.
3-1/2" Pipe	4.000	3-1/2-2C	4"	2	5/8 x 2	3.7	0104002B2FG	0104002W2
	4.000	3-1/2-3C	6"	3	5/8 x 2	5.3	0104003B2FG	0104003W2FG
	4.000	3-1/2-4C	8"	4	5/8 x 2	7.2	0104004B2FG	0104004W2FG
3-3/4" Tubing	3.750	3-3/4-3C-OD	6"	3	5/8 x 2	5.6	0103753B2	0103753W2
	3.750	3-3/4-4C-OD	8"	4	5/8 x 2	7.4	0103754B2	0103754W2
4" Tubing	4.000	3-1/2-2C	4"	2	5/8 x 2	3.7	0104002B2FG	0104002W2
	4.000	3-1/2-3C	6"	3	5/8 x 2	5.3	0104003B2FG	0104003W2FG
	4.000	3-1/2-4C	8"	4	5/8 x 2	7.2	0104004B2FG	0104004W2FG
4" Pipe	4.500	4-2C	4"	2	5/8 x 2	3.8	0104502B2	0104502W2
	4.500	4-3C	6"	3	5/8 x 2	5.5	0104503B2FG	0104503W2FG
	4.500	4-4C	8"	4	5/8 x 2	7.7	0104504B2FG	0104504W2FG
4-1/4" Tubing	4.250	4-1/4-3C-OD	6"	3	5/8 x 2	5.5	0104253B2	0104253W2
	4.250	4-1/4-4C-OD	8"	4	5/8 x 2	7.0	0104254B2	0104254W2
4-1/2" Tubing	4.500	4-2C	4"	2	5/8 x 2	3.8	0104502B2	0104502W2
	4.500	4-3C	6"	3	5/8 x 2	5.5	0104503B2FG	0104503W2FG
	4.500	4-4C	8"	4	5/8 x 2	7.7	0104504B2FG	0104504W2FG
4-1/2" Pipe	5.000	4-1/2-2C	4"	2	5/8 x 2	4.2	0105002B2	0105002W2
	5.000	4-1/2-3C	6"	3	5/8 x 2	6.2	0105003B2FG	0105003W2FG
	5.000	4-1/2-4C	8"	4	5/8 x 2	8.1	0105004B2FG	0105004W2FG
4-3/4" Tubing	4.750	4-3/4-3C-OD	6"	3	5/8 x 2	6.5	0104753B2	0104753W2
	4.750	4-3/4-4C-OD	8"	4	5/8 x 2	8.6	0104754B2	0104754W2
5" Tubing	5.000	4-1/2-2C	4"	2	5/8 x 2	4.2	0105002B2	0105002W2
	5.000	4-1/2-3C	6"	3	5/8 x 2	6.2	0105003B2FG	0105003W2FG
	5.000	4-1/2-4C	8"	4	5/8 x 2	8.1	0105004B2FG	0105004W2FG
5" Pipe	5.563	5-2C	4"	2	5/8 x 2	4.6	0105562B2	0105562W2
	5.563	5-3C	6"	3	5/8 x 2	6.8	0105563B2FG	0105563W2FG
	5.563	5-4C	8"	4	5/8 x 2	8.8	0105564B2FG	0105564W2FG
5-1/4" Tubing	5.250	5-1/4-3C-OD	6"	3	5/8 x 2	6.6	0105253B2	0105253W2
5-1/2" Tubing	5.500	5-1/2-3C-OD	6"	3	5/8 x 2	6.8	0105503B2	0105503W2
	5.500	5-1/2-4C-OD	8"	4	5/8 x 2	9.0	0105504B2	0105504W2
5-3/4" Tubing	5.750	5-3/4-3C-OD	6"	3	5/8 x 2	7.8	0105753B2	0105753W2
	5.750	5-3/4-4C-OD	8"	4	5/8 x 2	9.2	0105754B2	0105754W2
6" Tubing	6.000	6-2C-OD	4"	2	5/8 x 2	4.7	0106002B2FG	0106002W2
	6.000	6-3C-OD	6"	3	5/8 x 2	7.0	0106003B2FG	0106003W2FG
	6.000	6-4C-OD	8"	4	5/8 x 2	9.4	0106004B2FG	0106004W2FG
	6.000	6-5C-OD	10"	5	5/8 x 2	11.8	0106005B2	0106005W2
6" Pipe	6.625	6-2C	4"	2	5/8 x 2	5.3	0106622B2	0106622W2
	6.625	6-3C	6"	3	5/8 x 2	7.8	0106623B2FG	0106623W2
	6.625	6-4C	8"	4	5/8 x 2	10.4	0106624B2FG	0106624W2FG
	6.625	6-5C	10"	5	5/8 x 2	14.3	0106625B2	0106625W2
6-1/4" Tubing	6.250	6-1/4-3C-OD	6"	3	5/8 x 2	7.3	0106253B2	0106253W2
	6.250	6-1/4-4C-OD	8"	4	5/8 x 2	10.0	0106254B2	0106254W2
6-1/2" Tubing	6.500	6-1/2-3C-OD	6"	3	5/8 x 2	7.5	0106503B2	0106503W2
	6.500	6-1/2-4C-OD	8"	4	5/8 x 2	10.4	0106504B2	0106504W2
6-3/4" Tubing	6.750	6-3/4-3C-OD	6"	3	5/8 x 2	7.7	0106753B2	0106753W2
	6.750	6-3/4-4C-OD	8"	4	5/8 x 2	10.8	0106754B2	0106754W2
7" Tubing	7.000	7-3C-OD	6"	3	5/8 x 2	7.9	0107003B2	0107003W2
	7.000	7-4C-OD	8"	4	5/8 x 2	10.8	0107004B2	0107004W2
	7.000	7-5C-OD	10"	5	5/8 x 2	13.7	0107005B2	0107005W2
7-1/4" Tubing	7.250	7-1/4-3C-OD	6"	3	5/8 x 2	8.3	0107253B2	0107253W2
7-1/2" Tubing	7.500	7-1/2-3C-OD	6"	3	5/8 x 2	8.5	0107503B2	0107503W2
	7.500	7-1/2-4C-OD	8"	4	5/8 x 2	11.3	0107504B2	0107504W2
7-3/4" Tubing	7.750	7-3/4-3C-OD	6"	3	5/8 x 2	8.9	0107753B2	0107753W2
8" Tubing	8.000	8-2C-OD	6"	2	3/4 x 3	11.0	0108002B2	0108002W2
	8.000	8-3C-OD	8"	3	3/4 x 3	14.3	0108003B2FG	0108003W2
	8.000	8-4C-OD	10"	4	3/4 x 3	18.0	0108004B2FG	0108004W2
	8.000	8-5C-OD	12"	5	3/4 x 3	22.0	0108005B2	0108005W2
	8.000	8-2C	6"	2	3/4 x 3	11.5	0108622B2	0108622W2
8" Pipe	8.625	8-3C	8"	3	3/4 x 3	14.6	0108623B2	0108623W2
	8.625	8-4C	10"	4	3/4 x 3	18.8	0108624B2FG	0108624W2FG
	8.625	8-5C	12"	5	3/4 x 3	23.0	0108625B2	0108625W2
	9.000	9-3C-OD	8"	3	3/4 x 3	15.9	0109003B2	0109003W2
9" Tubing	9.000	9-4C-OD	10"	4	3/4 x 3	19.9	0109004B2	0109004W2

* WHEN ORDERING, always give the Code No. and O.D. of the pipe or tube on which coupling will be used. *Neoprene
 (1) Same price applies for couplings with red rubber gaskets. All prices shown are F.O.B. Erie, PA – prices subject to change without notice.
 (2) Stainless steel grounding strips are standard on all couplings. Aluminum grounding strips or couplings without grounding strips available at same price.

Tubing or Nom. Pipe (IPS) Size	O.D. Tubing Pipe (A)	Morris Coupling Code	Coupling Length (B)	No. of Bolts	Size of Bolts	Weight Each (lbs.)	BLACK Neoprene Gasket*	FOOD-GRADE WHITE Neoprene Gasket*
							PIC No.	PIC No.
10" Tubing	10.000	10-3C-OD	8"	3	3/4 x 3	17.5	0110003B2	0110003W2
	10.000	10-4C-OD	10"	4	3/4 x 3	21.8	0110004B2FG	0110004W2
	10.000	10-5C-OD	12"	5	3/4 x 3	26.1	0110005B2	0110005W2
10" Pipe	10.750	10-3C	8"	3	3/4 x 3	16.4	0110753B2	0110753W2
	10.750	10-4C	10"	4	3/4 x 3	20.3	0110754B2	0110754W2
	10.750	10-5C	12"	5	3/4 x 3	25.2	0110755B2	0110755W2
12" Tubing	12.000	12-3C-OD	8"	3	3/4 x 3	20.4	0112003B2	0112003W2
	12.000	12-4C-OD	10"	4	3/4 x 3	25.5	0112004B2	0112004W2
	12.000	12-5C-OD	12"	5	3/4 x 3	30.2	0112005B2	0112005W2
12" Pipe	12.750	12-3C	8"	3	3/4 x 3	18.7	0112753B2	0112753W2
	12.750	12-4C	10"	4	3/4 x 3	23.3	0112754B2	0112754W2
	12.750	12-5C	12"	5	3/4 x 3	28.1	0112755B2	0112755W2
13" Tubing	13.000	13-3C-OD	8"	3	3/4 x 3	21.8	0113003B2	0113003W2
	13.000	13-4C-OD	10"	4	3/4 x 3	26.8	0113004B2	0113004W2
	13.000	13-5C-OD	12"	5	3/4 x 3	32.6	0113005B2	0113005W2
14**	14.000	14-3C-OD	8"	3	3/4 x 3	22.9	0114003B2	0114003W2
	14.000	14-4C-OD	10"	4	3/4 x 3	27.6	0114004B2	0114004W2
	14.000	14-5C-OD	12"	5	3/4 x 3	34.2	0114005B2	0114005W2
	14.000	14-6C-OD	16"	6	3/4 x 3	45	0114006B2	0114006W2
15**	15.000	15-3C-OD	8"	3	3/4 x 3	24	0115003B2	0115003W2
	15.000	15-4C-OD	10"	4	3/4 x 3	29.6	0115004B2	0115004W2
	15.000	15-5C-OD	12"	5	3/4 x 3	35.9	0115005B2	0115005W2
	15.000	15-6C-OD	16"	6	3/4 x 3	48	0115006B2	0115006W2
16**	16.000	16-3C-OD	8"	3	3/4 x 3	25.3	0116003B2	0116003W2
	16.000	16-4C-OD	10"	4	3/4 x 3	31.1	0116004B2	0116004W2
	16.000	16-5C-OD	12"	5	3/4 x 3	37.8	0116005B2	0116005W2
	16.000	16-6C-OD	16"	6	3/4 x 3	49.5	0116006B2	0116006W2
18**	18.000	18-4C-OD	10"	4	3/4 x 3	34.7	0118004B2	0118004W2
	18.000	18-5C-OD	12"	5	3/4 x 3	41.9	0118005B2	0118005W2
	18.000	18-6C-OD	16"	6	3/4 x 3	54.9	0118006B2	0118006W2
20**	20.000	20-5C-OD	12"	5	3/4 x 3	45.6	0120005B2	0120005W2
	20.000	20-6C-OD	16"	6	3/4 x 3	59.5	0120006B2	0120006W2
22**	22.000	22-5C-OD	12"	5	3/4 x 3	48.9	0122005B2	0122005W2
	22.000	22-6C-OD	16"	6	3/4 x 3	64.4	0122006B2	0122006W2
24**	24.000	24-5C-OD	12"	5	3/4 x 3	52.1	0124005B2	0124005W2
	24.000	24-6C-OD	16"	6	3/4 x 3	68.6	0124006B2	0124006W2

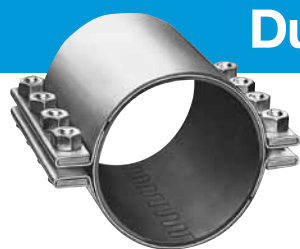
• WHEN ORDERING, always give the Code No. and O.D. of the pipe or tube on which coupling will be used.

• Overall height of coupling, including flange, is coupling O.D. plus 2-3/4".

**Tubing and pipe have same O.D. *Neoprene

(1) Same price applies for couplings with red rubber gaskets.

(2) Stainless steel grounding strips are standard on all couplings. Aluminum grounding strips or couplings without grounding strips available at same price.



Dual-Purpose Couplings For Tubing And Pipe

When higher pressures or applications requiring greater end-pull capabilities are encountered, these dual-flange couplings are recommended. Gasket is one piece with single row of interlocking teeth as illustrated. The outer shell with flanges and the inner sleeve are two pieces each. Dual-Purpose Couplings slide to position at the joint without removing the bolts ... or may be separated into halves for assembly around the joint.

Tubing or Nom. Pipe (IPS) Size	O.D. Tubing Pipe (A)	Morris Coupling Code	Coupling Length (B)	No. of Bolts	Size of Bolts	Weight Each (lbs.)	BLACK Neoprene Gasket*	FOOD-GRADE WHITE Neoprene Gasket*
							PIC No.	PIC No.
20**	20.000	20-5C-OD DP	12"	10	3/4 x 3	54.8	0820005B2	0820005W2
	20.000	20-6C-OD DP	16"	12	3/4 x 3	72.9	0820006B2	0820006W2
22**	22.000	22-5C-OD DP	12"	10	3/4 x 3	57.8	0822005B2	0822005W2
	22.000	22-6C-OD DP	16"	12	3/4 x 3	76.6	0822006B2	0822006W2
24**	24.000	24-5C-OD DP	12"	10	3/4 x 3	61.2	0824005B2	0824005W2
	24.000	24-6C-OD DP	16"	12	3/4 x 3	81.3	0824006B2	0824006W2
26**	26.000	26-5C-OD DP	12"	10	3/4 x 3	64.5	0826005B2	0826005W2
	26.000	26-6C-OD DP	16"	12	3/4 x 3	85.8	0826006B2	0826006W2
28**	28.000	28-5C-OD DP	12"	10	3/4 x 3	67.8	0828005B2	0828005W2
	28.000	28-6C-OD DP	16"	12	3/4 x 3	93.1	0828006B2	0828006W2

• WHEN ORDERING, always give the Code No. and O.D. of the pipe or tube on which coupling will be used.

• Dimensions of couplings to outside edges of flanges is coupling O.D. plus 5-1/2".

**Tubing and pipe have same O.D. *Neoprene.

Gasket Data for Morris Compression Couplings

TEMPERATURE MAX LIMITATIONS OF GASKET MATERIAL FOR COMPRESSION COUPLINGS

	DUROMETER	TEMPERATURE MAX		CONTINUOUS TEMPERATURE
		F°	C°	
GUM RUBBER (FDA Food Grade)	40	200°	93°	180° F
RED RUBBER	75	210°	98°	180° F
BLACK NEOPRENE	60	200°	93°	189° F
WHITE NEOPRENE (FDA Food Grade)	60	200°	82°	180° F
EPDM BLACK	60	275°	135°	250° F
WHITE EPDM	60	250°	121°	180° F
VITON	70	600°	315°	450° F
RED SILICONE	60	500°	260°	450° F
RED SILICONE (FDA Food Grade)	60	500°	260°	450° F
BLUE SILICONE (Metal detectable)	60	500°	260°	450° F
NON-ASBESTOS 3700		700°	370°	400° F
NITRILE	60	225°	107°	200° F

Distributed By: **plastixs**[®]
manufacturing solutions

151 Memorial Drive, Suite H
Shrewsbury, MA 01545
888-792-2223

www.plastixs.com
sales@plastixs.com

IMPORTANT - DO NOT DESTROY

INSTALLATION INSTRUCTIONS FOR MORRIS COMPRESSION COUPLINGS

HOW TO HANDLE MORRIS COUPLINGS

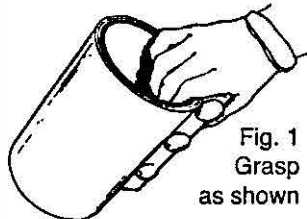


Fig. 1
Grasp
as shown

Couplings are shipped ready-to-install...do not disassemble. Removal of grounding strip may cause personal injury. Wear gloves when handling. To prevent gasket from slipping out of proper position always grasp coupling as shown in Fig. 1 This will save time by maintaining proper position of gasket and sleeve in relation to shell and flange.

INSTALLATION IS QUICK-EASY . . .

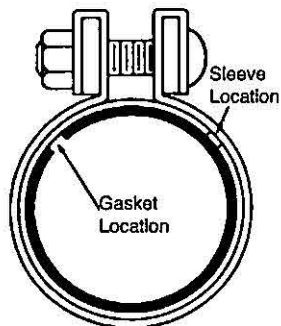


Fig. 2 Coupling Ready to Install

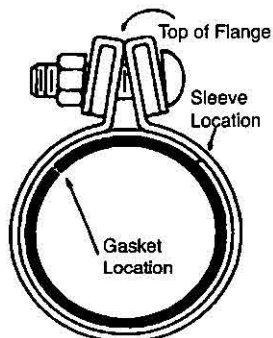


Fig. 3 Coupling Fully Tightened

1. Confirm Code No. for pipe O.D. size you intend joining. Each Morris Compression Coupling has been factory inspected for proper O.D. size before shipment.
2. Be sure outside surface of pipe is dry, and free of dirt, grease or external burrs. (Burr & jagged pipe ends can cut gasket; dirt & grease can cause slippage)
3. Grasp coupling as shown in Figure 1 to keep gasket and sleeve (and gasket protector when used) in separate quadrants as shown Figure 2. Be sure gasket and/or gasket protector teeth mesh and do not overlap.
4. Slide coupling over one pipe end then butt pipe ends (a small gap 1/16 maximum at butt joint will not reduce coupling performance). Slide coupling back until coupling (and gasket protector when used) is centered over joint. Use care when sliding coupling into place—avoid wrinkling or overlapping gasket (or gasket protector when used).
5. When static electricity bleed path is required then a grounding strip should be used.
6. Partially tighten bolts uniformly and sequentially to insure proper seating of inner sleeve and gasket. Repeat as necessary to achieve torque values below. Failure to follow this process may cause improper tightening.
7. Then tighten bolts evenly as follows:
 5/16 bolt size—12 ft. lbs. torque
 1/2 bolt size—45 ft. lbs. torque
 5/8 bolt size—65 ft. lbs. torque
 3/4 bolt size—95 ft. lbs. torque
 (Where SAE GR 5 5/8 bolts are specified tighten to 95 ft.-lbs.) (For couplings with aluminum shell and inner sleeve do not exceed 40 ft. lbs.)
8. When properly and evenly tightened to the recommended torques the coupling installation is complete. The top edges of the flanges will appear as a vee when viewed from the end as shown in Figure 3.

...Do not attempt tightening bolts to flatten flange faces together as this exceeds recommended limits.

©Morris Coupling Company 1978

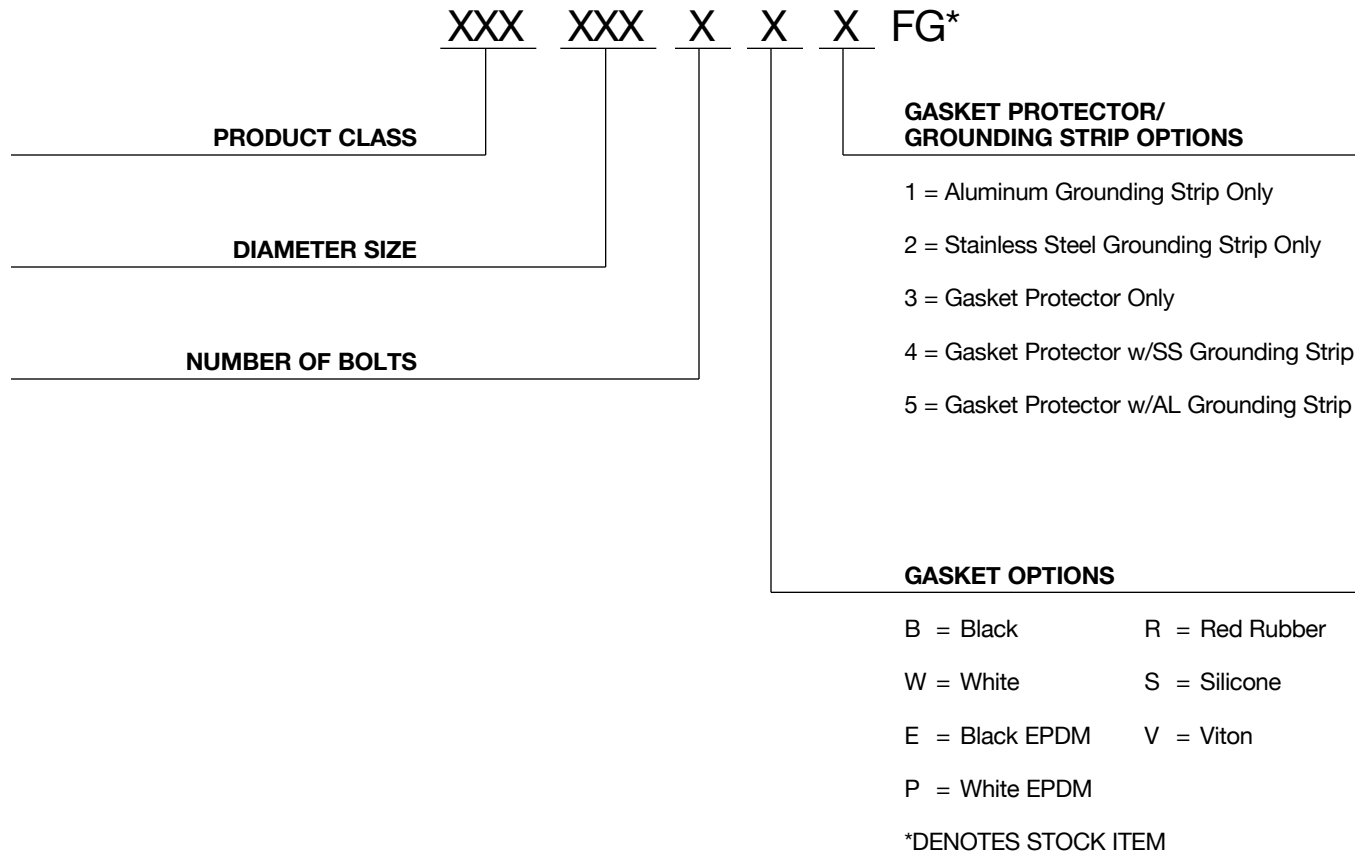
Printed in U.S.A.
8/13 15M CP

 **MORRIS**
COUPLING COMPANY
2240 WEST 15TH STREET • ERIE, PA. 16505 • PHONE 814-459-1741

Morris Coupling Nomenclature

If You Prefer To Use Our Computer PIC Number Designation

WHEN ORDERING



EXAMPLE

