

Distributed By: **plastixs**[®]
manufacturing solutions

| | |
|----------------------|----------------------|
| Date: | Salesperson: |
| Customer ID: | Rep Group: |
| Quote/Lead #: | Completed By: |
| Due Date: | Account Type: |

| | |
|---------------------------|---------------------------|
| Send Quotation To: | |
| Company: | Project Reference: |
| Address: | |
| City: | |
| Prov/State: | |
| Postal/Zip: | |
| Country: | |
| Contact: | |
| Title: | |
| Email: | CC: |
| Phone: | Email: |

Product Details:

| | |
|--|---------------------------------|
| Product Name: | Particle Size/Dimension: |
| Product Type: | Static Likely Present: |
| Product Density: | Product Temp: |
| Is Product Free Flowing? | |
| Virgin Material - What Percentage: | % |
| Regrind Material - What Percentage: | % |
| Other Material - What Percentage: | % Descriptions: |

| |
|-------------------------|
| Equipment above: |
| Equipment below: |

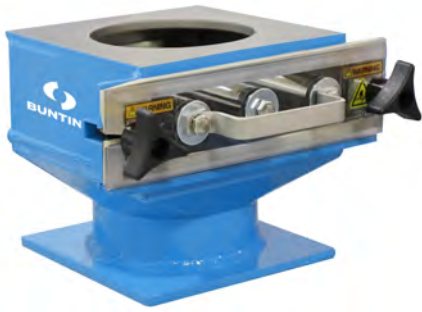
FF Drawer Sizing:

| LINE SIZE | FF4 | | FF6 | | FF8 | | FF10 |
|--------------------|--------|------|--------|------|--------|-------|-----------|
| Min. Round Opening | 7/8" | 22mm | 1-3/4" | 44mm | 3-1/8" | 79mm | VARIABLES |
| Max Round Opening | 2-1/8" | 54mm | 3-7/8" | 98mm | 6" | 152mm | VARIABLES |
| Max Square Opening | 1-1/2" | 38mm | 2-3/4" | 70mm | 4-1/4" | 108mm | VARIABLES |

Option Legend:

| | | | |
|------------------------|--------------------------|----------------------------|------------------------|
| Magnet Load: | Slide Gate: | Magnet Insert: | Transitions: |
| N5K - Standard (180°F) | SL - Slide Gate | S - Standard Cartridge | M - Mild Steel Casting |
| HT -High Temp. (392°F) | SLP - Powder Seal Kit | MSCI - Manual Self-Clean | SS - Stainless Steel |
| MSCI-(302°F) | IS - Internal Slide Gate | PSC - Pneumatic Self-Clean | |

FF Drawer Configuration:



Quick Ship FF Drawer (1-2 Day Shipping):

Qty: Model: Size:

10 Day Delivery FF Drawer:

| Qty: | Model: | Size: | Magnet Load: | Slide Gate: | Liquid Port: | Transitions: | Dump Tube: | Purge Hopper: | Magnet Insert: |
|------|--------|-------|--------------|-------------|--------------|--------------|------------|---------------|----------------|
|------|--------|-------|--------------|-------------|--------------|--------------|------------|---------------|----------------|

Options:

Stainless Housing Type:

TOP FLANGE

A

B

C

D

E

F

G

H

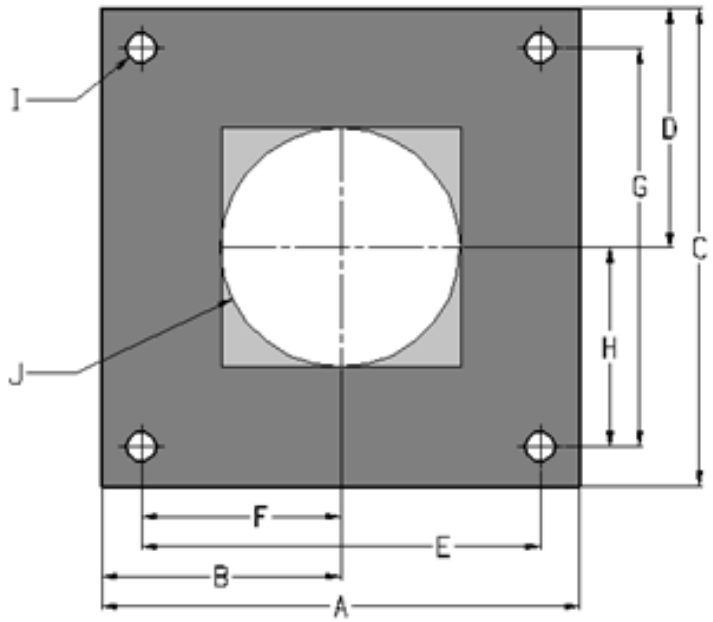
THREAD SIZE USED

I

J Opening

Front to Back

Side to Side



Notes: