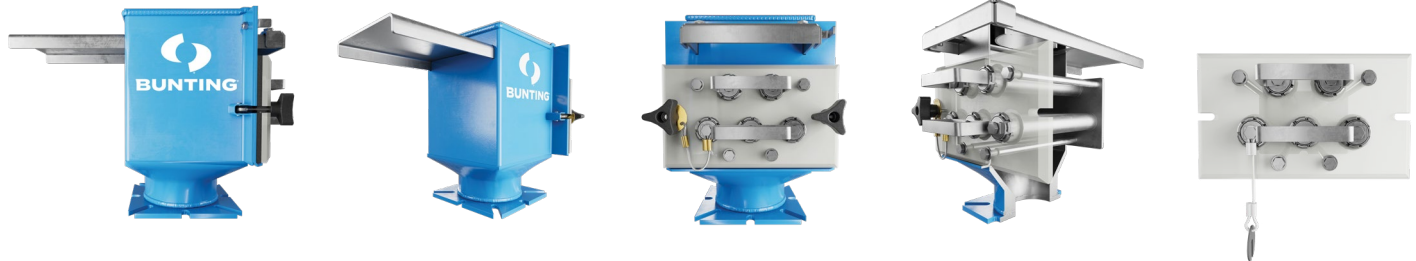


# FF SERIES DRAWER

<b>INDUSTRIES</b>	Plastics
<b>MAGNET</b>	Neodymium
<b>STRENGTH</b>	5,000 Gauss (option for higher gauss)
<b>MATERIAL</b>	Dry
<b>SIZES (MM)</b>	100, 150, 200, 250, 300
<b>SIZES (IN)</b>	4, 6, 8, 10, 12
<b>CONVEYING</b>	Gravity Flow & Choke Feed
<b>COLLECTS</b>	Ferrous & Abraded Stainless Steel
<b>TEMPERATURE</b>	180F (80C) or 392F (200C)



## FEATURES

**Effective Metal Separation:** The FF Drawer Magnet effectively separates and holds metal contaminants, preventing them from entering processing equipment.

**Minimize Downtime:** The slide gate allows you to shut off the material flow, and clean the magnet without compromising productivity.

**Durable Construction:** 11 ga. housing can support symmetrical compression loads up to 10,000 lbs.

**Efficient Design:** Two rows of 25 mm (1 in) tubes maximize the magnetic circuit, while allowing material to flow freely through.

**EPDM Gasket:** Ethylene Propylene Diene Monomer rubber gaskets resist heat aging and compression set.

**Customizable:** Customization options are available to meet specific application requirements.

**Compliance:** Bunting's FF Drawer Magnet meets relevant industry standards and regulations for magnetic separation equipment.

## OPTIONS



### HIGH TEMPERATURE

Rated for up to 392° F and 200° C for high-temp processing.



### SELF-CLEANING

Magnetic drawer insert removes ferrous particles with nylon wipers.



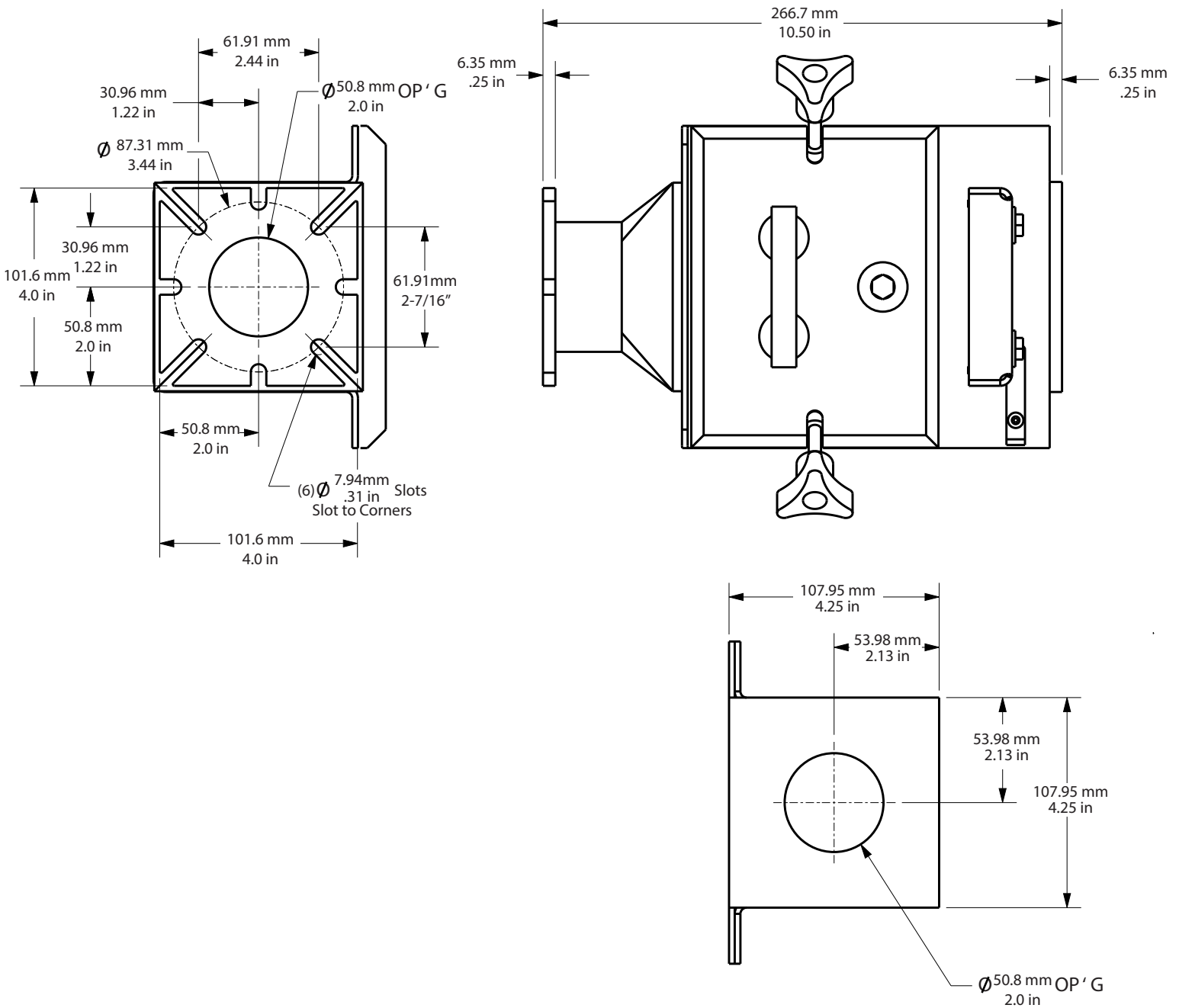
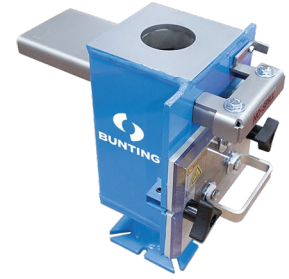
### OPTIONS

Purge Hopper, Dump Tube, Liquid Port, Powder Seal Kit.

## OVERVIEW

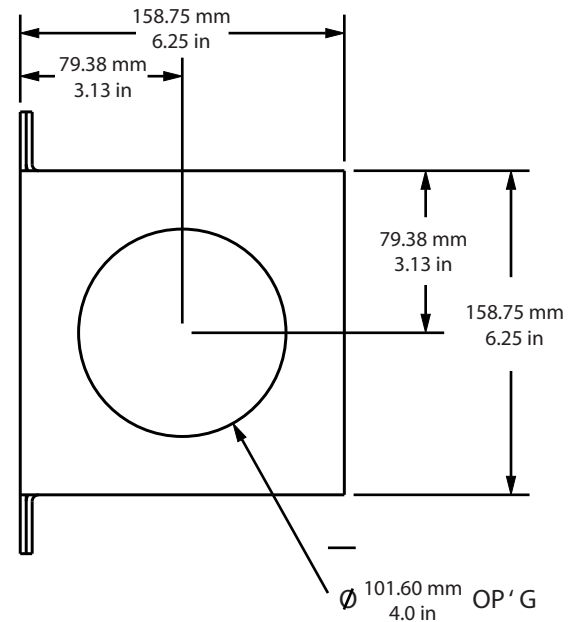
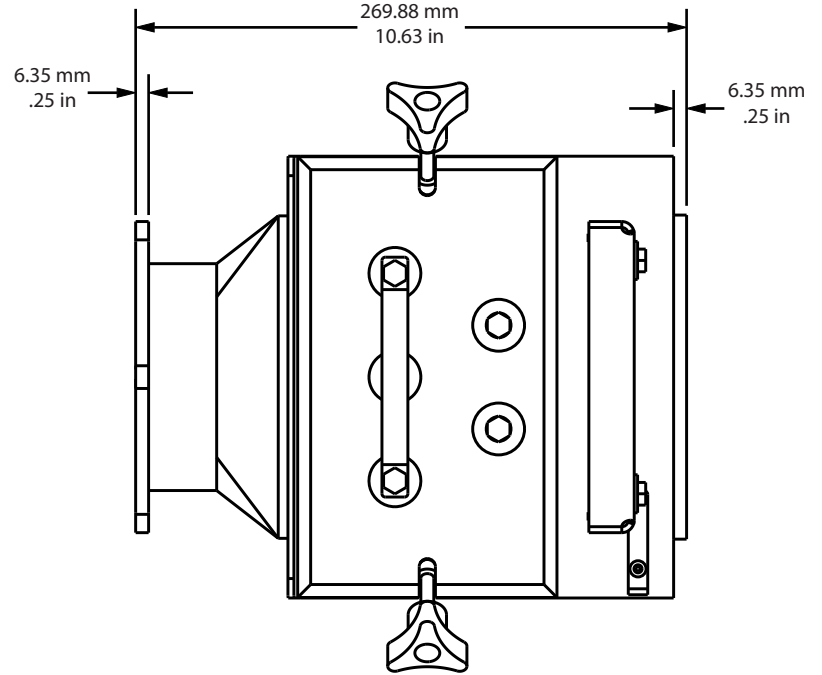
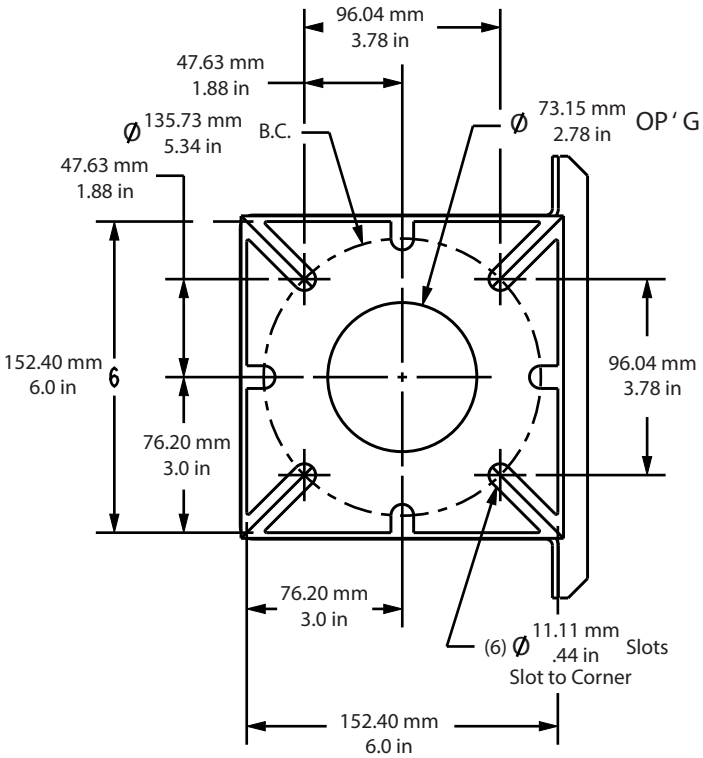
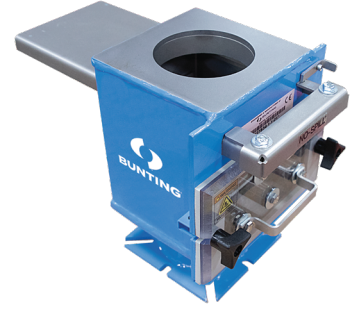
For over 50 years, Bunting's FF Series Drawer Magnets have set the standard in the plastics industry for superior magnetic separation. Introduced in 1966, these magnets have remained the top choice for extrusion, injection, and blow molding equipment. Designed specifically for the plastics industry, Bunting offers a range of fully customizable FF drawer models to meet diverse application needs. Whether you are involved with injection molding, or plastics recycling, our FF Series Drawer Magnets can be tailored to fit your exact requirements.

# MODEL: FF4-SF-APP



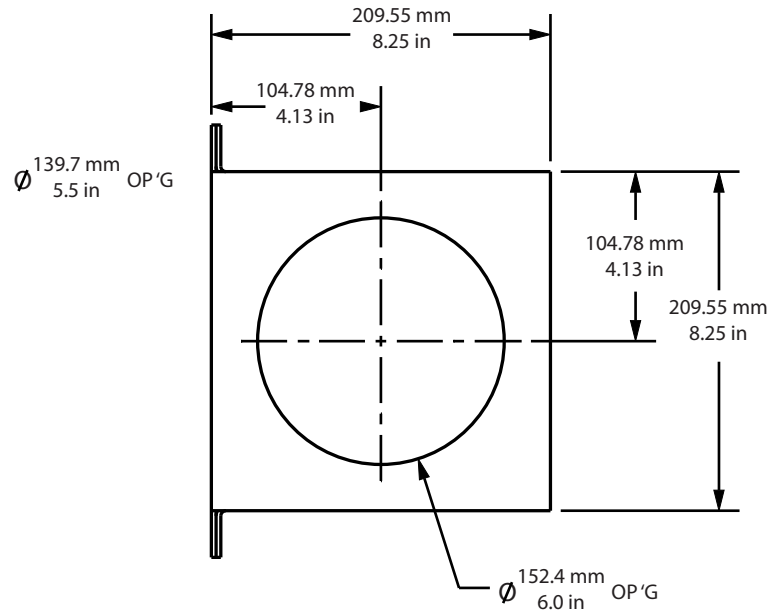
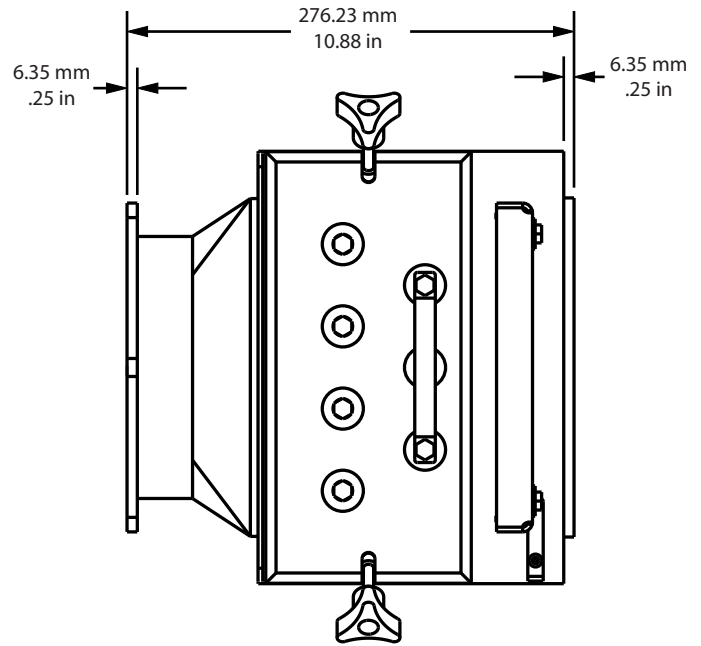
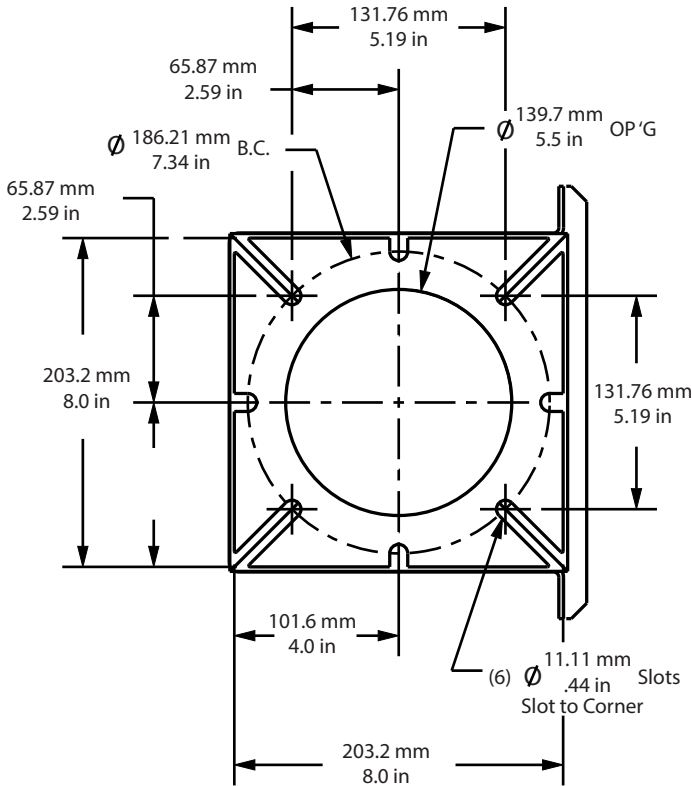
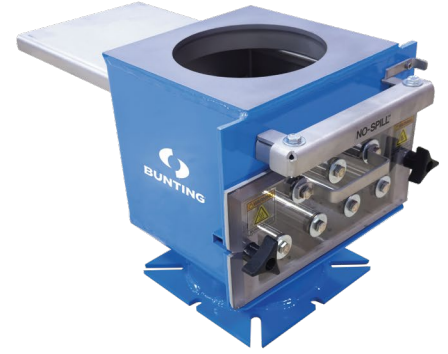
Customized openings up to 50.8mm (2")

# MODEL: FF6-SF-APP



Customized openings: 50.80 mm - 101.60 mm (2.0 in - 4.0 in)

# MODEL: FF8-SF-APP



Customized openings 101.6 mm - 152.4 mm (4.0 in - 6.0 in)