

# Material Bin Covers

Gaylord, Drum & Octabin Covers

## Eliminate Material Contamination

### Features

- **Single or dual 2.76"** wand openings
- **Zippers** allow wand openings to be closed while not in use
- **Clear viewing window** for quick visual check (*not included in positive pressure applications*)
- Constructed with **durable, breathable fabric**
- **Positive and negative** pressure styles
- Many **standard sizes in stock** for quick delivery
- **Customizable** to suit your specifications

### Description

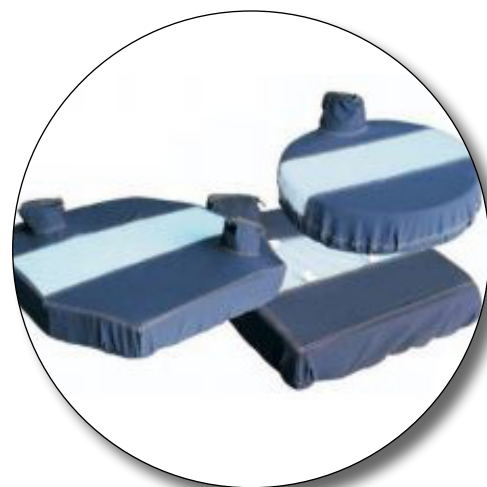
Plastixs Gaylord, Drum & Octabin Covers improve the quality of molded parts and increase good production by preventing contamination of raw materials.

Constructed of breathable polypropylene fabric, these durable covers enable air movement as the material is transferred into or suctioned out of the container. Crystal clear vinyl viewing window allows for a quick visual check of material levels. All material bin covers include elastic binding around the wand openings and the bottom of the skirt for a secure fit.

**Gaylord and Octabin Covers** are available for positive and negative pressure applications. **Standard negative pressure covers** feature a viewing window with two 2.76" wand openings in opposite corners, support loops and adjustable Velcro straps in each corner for a secure fit, with the option of an added side belt and buckle. **Positive pressure covers** do *not* contain a viewing window, and have a single 6" diameter x 10" high center port, and include an extra long skirt with support loops, Velcro straps in each corner and a belt and buckle for a secure, snug fit.

**Standard Drum Covers** are one size fits all drums from 19" up to 23.5" diameter with the options of single or dual wand openings and an added draw cord for an extra secure fit. Universal sizing reduces drum cover inventory, but custom covers can also be made to your specifications.

Plastixs Material Bin Covers provide a rapid pay back based on scrap reduction and increased good output.



All Material Bin Covers are customizable to your specifications. Complete a custom request form to receive a quote with pricing and lead times. Custom request forms are interactive and can be downloaded from our website on the product pages and/or under [Technical Resources](#) - Gaylord Covers or Drum Covers.

## Drum Covers

**Standard Drum Covers** are sized to fit 19" to 23.5" diameter drums. Single or dual wand openings are elasticized to accommodate a 2" to 2.76" diameter vacuum wand. Ports may be zippered closed when not in use. Clear viewing window allows visual check of material. Elastic binding around skirt and optional draw cord provide an extra secure fit.

Model Number	Description
DC-001	1-port standard drum cover
DC-002	2-port standard drum cover
DC-001-DSE	1-port standard drum cover with draw cord

## Gaylord & Octabin Covers

Our standard negative pressure covers have two 2.76" elasticized wand openings located in opposite corners with a clear viewing window in the middle. Ports may be zippered closed when not in use. Positive pressure covers have a single 6" diameter x 10" high center port and a longer skirt with belt and buckle for a secure fit. All Gaylord and Octabin Covers feature adjustable Velcro straps for a customized fit and the option to add a side belt and buckle for an even more secure fit. Most standard Gaylord Covers are in-stock and available to ship quickly. Octabin Covers are made to order and are available in many configurations.

Model Number	Fits Gaylord Size	Description
GLC-4040	40" x 40" only	2-port Standard Gaylord Covers for <b>negative pressure</b> with two 2.76" elasticized wand openings with zippers, viewing window, support loops and Velcro straps in each corner
GLC-4046	34" x 40" to 40" x 46"	
GLC-4248	36" x 42" to 42" x 48"	
GLC-4848	48" x 48" only	
GLC-4852	48" x 52" only	
GLC-5252	52" x 52" only	
GLC-6060	60" x 60" only	
GLC-4040P	40" x 40" only	1-port Standard Gaylord Covers for <b>positive pressure</b> with NO window, one 6" diameter x 10" high center wand opening with zipper, longer skirt with belt and buckle, support loops and Velcro straps in each corner
GLC-4248P	36" x 42" to 42" X 48"	
GLC-4848P	48" X 48" only	

Available [online](#) or contact [sales@plastixs.com](mailto:sales@plastixs.com) for more information.