

Flex-Tube® EF (Eco-Friendly)

Environmentally friendly medium weight clear co-extruded polyolefin elastomer hose with a rigid green external polypropylene helix.

APPLICATIONS:

A

Air

- Heating or Cooling
- Drying
- Dehumidification
- Cleaning
- Dust Cover
- Supply
- Connectors
- Air Filter Intakes

F

Fume

- Laboratory
- Industrial
- Automotive
- Painting
- Welding
- Soldering
- Plating

D

Dust

- Filtering
- Movement
- Exhaust
- Duct Cleaning
- Textile Fiber Collection
- Vacuum Cleaning
- Lint Collection
- Loading (containment)
- Cutting

FEATURES:

- Environmentally friendly PVC replacement hose
- Ultra smooth interior assures efficient airflow
- Spiral co-extruded engineered construction
- Helix acts as a wearstrip
- Good chemical and abrasion resistance
- Low outgassing & low VOC vs. standard PVC hose
- Wall Thickness = .028" (2.5" to 4"), .030" (5"), .035" (6" to 10")
- Cuffs available
- Standard Max. Inside Diameter = 8", consult sales team for pricing & minimums on larger sizes

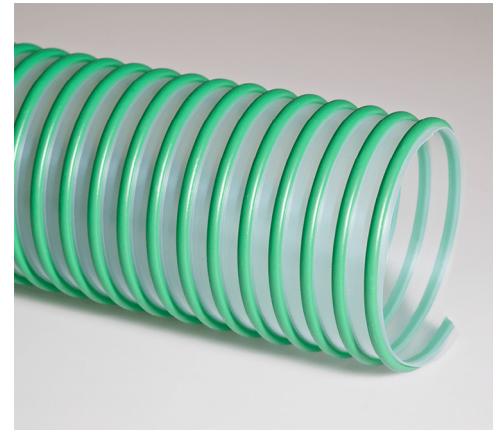
MARKET APPLICATIONS:

Duct Cleaning, Industrial Vacuum Cleaners, Textile Fiber Collection

ENGINEERING & TECHNICAL DATA - Flex-Tube® EF (Eco-Friendly)

Item #	Inside Diameter (ID)	Length	Approx. Weight (lbs/ft)	Wall Thickness	CL Bend Radius	Compression Ratio	Negative Pressure (in/Hg)	Working Pressure (PSI)
3522025025 3522025050	2.5"	25 ft 50 ft	0.3	.028	4.6"	1.9:1	26	20
3522030025 3522030050	3"	25 ft 50 ft	0.35	.028	3.8"	1.8:1	22	15
3522040025 3522040050	4"	25 ft 50 ft	0.51	.028	4.8"	2:1	20	12
3522050025 3522050050	5"	25 ft 50 ft	0.62	.030	5.75"	2:1	18	11
3522060025 3522060050	6"	25 ft 50 ft	0.78	.035	6.75"	2:1	16	10

(continued.....)



Flex-Tube[®] EF (Eco-Friendly) (continued)

ENGINEERING & TECHNICAL DATA - Flex-Tube[®] EF (Eco-Friendly)

Item #	Inside Diameter (ID)	Length	Approx. Weight (lbs/ft)	Wall Thickness	CL Bend Radius	Compression Ratio	Negative Pressure (in/Hg)	Working Pressure (PSI)
3522070025 3522070050	7"	25 ft 50 ft	0.82	.035	7.75"	2:1	13	9
3522080025 3522080050	8"	25 ft 50 ft	1.1	.035	8.5"	2:1	12	8

Technical data based on 2 ft. straight lengths of hose @ 72°F

Construction: Environmentally friendly medium weight clear co-extruded polyolefin elastomer hose with a rigid green external polypropylene helix.

Temperature Range: -40°F to 225°F

Standard Color: Clear with Green Helix

Standard Lengths: 25 & 50 Feet

Disclaimer: The proper use and maintenance of hose and/or ducting manufactured by Flexaust is the sole responsibility of the purchaser and ultimate user of the product. This information is presented as a general guide only. The number of variables which can be present in any applicaiton make firm recommendations impossible.