

Flex-Tube® TR

Medium weight black co-extruded thermoplastic rubber hose with a rigid black external polypropylene helix.

APPLICATIONS:



Fume

- Laboratory
- Industrial
- Automotive
- Painting
- Welding
- Soldering
- Plating



Dust

- Filtering
- Movement
- Exhaust
- Duct Cleaning
- Textile Fiber Collection
- Vacuum Cleaning
- Lint Collection
- Loading (containment)
- Cutting

FEATURES:

- Ultra smooth interior wall assures efficient airflow
- Very flexible & crush resistant
- Tight bend radius
- Moisture & chemical resistant
- Designed for applications with wide temperature ranges
- Spiral co-extruded engineered construction
- Helix acts as a wearstrip
- Wall Thickness = .020" (.75"), .022" (1"), .024" (1.25"), .026" (1.5" to 5"), .035" (6" to 10")
- OEM lengths & colors available
- Cuffs available
- Standard Max. Temp.= 275°F., Intermittent to 300°F.

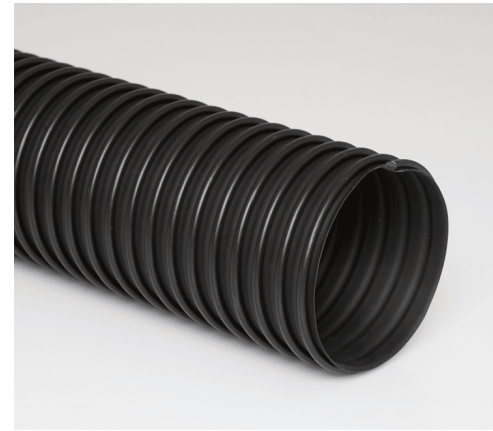
MARKET APPLICATIONS:

Duct Cleaning, Industrial Vacuum Cleaners, Textile Fiber Collection

ENGINEERING & TECHNICAL DATA - Flex-Tube® TR

Item #	Inside Diameter (ID)	Length	Approx. Weight (lbs/ft)	Wall Thickness	CL Bend Radius	Compression Ratio	Negative Pressure (in/Hg)	Working Pressure (PSI)
3510007525 3510007550	0.75"	25 ft 50 ft	0.07	.020	0.88"	2:1	29	40
3510010025 3510010050	1"	25 ft 50 ft	0.09	.022	1.25"	2:1	29	35
3510012525 3510012550	1.25"	25 ft 50 ft	0.13	.024	1.6"	2:1	29	28
3510015025 3510015050	1.5"	25 ft 50 ft	0.17	.026	1.85"	2:1	29	23
3510020025 3510020050	2"	25 ft 50 ft	0.24	.026	3.5"	2:1	29	20
3510025025 3510025050	2.5"	25 ft 50 ft	0.33	.026	4.3"	2:1	24	17
3510030025 3510030050	3"	25 ft 50 ft	0.36	.026	4.5"	2:1	20	15
3510040025 3510040050	4"	25 ft 50 ft	0.4	.026	5"	2:1	16	12

(continued.....)



Flex-Tube[®] TR (continued)

ENGINEERING & TECHNICAL DATA - Flex-Tube[®] TR

Item #	Inside Diameter (ID)	Length	Approx. Weight (lbs/ft)	Wall Thickness	CL Bend Radius	Compression Ratio	Negative Pressure (in/Hg)	Working Pressure (PSI)
3510050025 3510050050	5"	25 ft 50 ft	0.7	.026	6"	2:1	15	15
3510060025 3510060050	6"	25 ft 50 ft	0.8	.035	7"	2:1	14	18
3510070025 3510070050	7"	25 ft 50 ft	0.95	.035	8"	2:1	12	16
3510080025 3510080050	8"	25 ft 50 ft	1.13	.035	9.75"	2:1	8	15
3510100025	10"	25 ft	1.5	.035	11"	2:1	6	10

Technical data based on 2 ft. straight lengths of hose @ 72°F

Construction: Medium weight black co-extruded thermoplastic rubber hose with a rigid black external polypropylene helix.

Temperature Range: -60°F to 275°F

Standard Color: Black with Black Helix

Standard Lengths: 25 & 50 Feet

Disclaimer: The proper use and maintenance of hose and/or ducting manufactured by Flexaust is the sole responsibility of the purchaser and ultimate user of the product. This information is presented as a general guide only. The number of variables which can be present in any applicaiton make firm recommendations impossible.